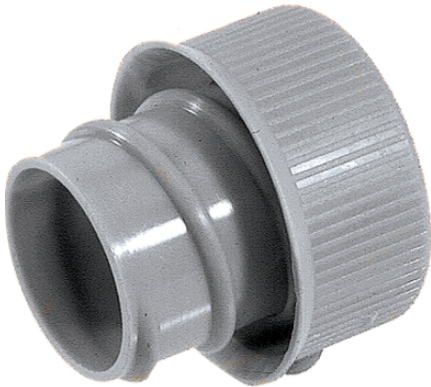


SILVYN® EE-K

SILVYN® EE-K - plastic insert for conduit SILVYN® FPS/FD-PU



Reliability

Benefits

Cable damage can be prevented

Application range

In combination with protective conduit:
SILVYN® FPS/ FD-PU
Conduit end cover

Product features

All-round collar completely covers the protective conduit end

Product Make-up

Threaded sleeve

Technical Data

Classification ETIM 5:

ETIM 5.0 Class-ID: EC000519

ETIM 5.0 Class-Description: Terminal sleeve for protective hose

Classification ETIM 6:

ETIM 6.0 Class-ID: EC000519

ETIM 6.0 Class-Description: Terminal sleeve for protective hose

Colour delivered:

Silver grey (RAL 7001)

Material:

PP

Temperature range:

-10°C to +110°C

Note

Photographs and graphics are not to scale and do not represent detailed images of the respective products.
Prices are net prices without VAT and surcharges. Sale to business customers only.

Article number	Nominal size	Suitable for SILVYN® F
SILVYN® EE-K		
52023340	10	7 x 10
52023350	14	10 x 14
52023360	17	13 x 17
52023370	19	15 x 19
52023380	21	16 x 21
52023390	27	22 x 27
52023400	36	29 x 36
52023410	45	38 x 45
52023430	56	48 x 56

Last Update (09.04.2018)

©2018 Lapp Group - Technical changes reserved

Product Management www.lappkabel.de

You can find the current technical data in the corresponding data sheet.

PN 0456 / 02_03.16

X-ON Electronics

Largest Supplier of Electrical and Electronic Components

Click to view similar products for [Conduit Fittings & Accessories](#) category:

Click to view products by [Lapp Kabel](#) manufacturer:

Other Similar products are found below :

[S53.35A](#) [260-416](#) [DM0240-1/2A](#) [817.612.0](#) [55506625](#) [1.511.2001.50](#) [1.533.1601.50](#) [1.533.2001.50](#) [52005810](#) [817.716.0](#) [712.015.0](#) [216-420](#) [2276](#) [2663-P](#) [C2070-P](#) [3582V](#) [2643-P](#) [4975](#) [2644-P](#) [90480](#) [2404-P](#) [1047561](#) [2723-P](#) [55506355](#) [1.513.1101.14](#) [55502461](#) [55502462](#) [55502463](#) [55502464](#) [55502473](#) [166-22214](#) [166-22215](#) [166-24800](#) [166-25801](#) [166-30318](#) [SHR-C1](#) [2037 12-20 LGR](#) [2037 16-24 LGR](#) [HP50SS](#) [55502470](#) [SH PA6 BL ND10](#) [5308 946](#) [295.012.0](#) [2955 M16](#) [2955 M25](#) [2955 M32](#) [2955 M40](#) [297.212.0](#) [297.240.0](#) [298.012.0](#)