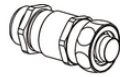
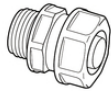


## SILVYN® FPS

SILVYN® FPS is a highly flexible protection conduit made of PVC



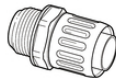
SILVYN® MSK-M



SILVYN® USK/USK-M  
IP54



SILVYN® US/US-M + EE-K  
IP54



SILVYN® LKI/LKI-M  
IP54



SILVYN® EE-K



Waterproof



Power chain



Corrosion-resistant

### Benefits

Dimensionally stable  
Crushable and extendable  
Highly oil and acid-resistant  
Liquidtight  
Corrosion-resistant

### Application range

Mechanical engineering  
In drag chains (SILVYN® CHAIN)  
Robot-building  
Moving applications  
Indoor applications

### Product features

Cadmium-free

### Norm references / Approvals

UL FILENUMBER E308201

Last Update (09.04.2018)

©2018 Lapp Group - Technical changes reserved

Product Management [www.lappkabel.de](http://www.lappkabel.de)

You can find the current technical data in the corresponding data sheet.

PN 0456 / 02\_03.16

## SILVYN® FPS

### Product Make-up

PVC-insulated steel spring wire  
Soft PVC outer sheath

### Note

PU = 50 m (on request)

### Technical Data

Classification ETIM 5:	ETIM 5.0 Class-ID: EC001177 ETIM 5.0 Class-Description: Protective plastic hose
Classification ETIM 6:	ETIM 6.0 Class-ID: EC001177 ETIM 6.0 Class-Description: Protective plastic hose
Certifications:	IEC EN 61386-23
Colour delivered:	Grey
Material:	Soft PVC with insulated spring steel wire
Temperature range:	-25°C to +80°C

### Note

Photographs and graphics are not to scale and do not represent detailed images of the respective products.  
Prices are net prices without VAT and surcharges. Sale to business customers only.

Article number	Nominal size	ID x OD mm	Bending radius (mm)	Suitable for SILVYN® USK-M/US-M	Suitable for SILVYN® LKI-M/MSK-M
<b>SILVYN® FPS</b>					
61711550	10	7 x 10	8	10 x 1,0	12 x 1,5
61711590	14	10 x 14	10	12 x 1,5	16 x 1,5
61711630	17	12.7 x 17.0	13	16 x 1,5	20 x 1,5
61711670	19	14.7 x 19.0	15	-	-
61711710	21	16 x 21	17	20 x 1,5	25 x 1,5
61711750	27	21.6 x 27.0	20	25 x 1,5	32 x 1,5
61711790	36	29 x 36	25	32 x 1,5	40 x 1,5
61711830	45	38 x 45	36	40 x 1,5	50 x 1,5
61711910	56	48 x 56	40	50 x 1,5	63 x 1,5
<b>SILVYN® FPS 10M</b>					
61721690	10	7 x 10	8	10 x 1,0	12 x 1,5
61721700	14	10 x 14	10	12 x 1,5	16 x 1,5
61721710	17	12.7 x 17.0	13	16 x 1,5	20 x 1,5
61721720	19	14.7 x 19.0	15	-	-
61721730	21	16 x 21	17	20 x 1,5	25 x 1,5
61721740	27	21.6 x 27.0	20	25 x 1,5	32 x 1,5
61721750	36	29 x 36	25	32 x 1,5	40 x 1,5
61721760	45	38 x 45	36	40 x 1,5	50 x 1,5
61721780	56	48 x 56	40	50 x 1,5	63 x 1,5

Last Update (09.04.2018)  
 ©2018 Lapp Group - Technical changes reserved  
 Product Management www.lappkabel.de  
 You can find the current technical data in the corresponding data sheet.  
 PN 0456 / 02\_03.16

## X-ON Electronics

Largest Supplier of Electrical and Electronic Components

*Click to view similar products for [Non-Heat Shrink Tubing and Sleeves](#) category:*

*Click to view products by [Lapp Kabel](#) manufacturer:*

Other Similar products are found below :

[CTA-0053](#) [8429-9](#) [8445-7.5](#) [8450](#) [120-116-1-1-09BE](#) [120-116-1-1-09BF](#) [120-116-1-1-09BP](#) [120-116-1-1-12BE](#) [120-116-1-1-12BP](#) [120-123-06](#) [120-123-10](#) [120-125-12BL](#) [120-125-12R](#) [120-125-20R](#) [120-126-09](#) [120-126-09BL](#) [120-126-12](#) [120-126-12BL](#) [120-126-52](#) [120-126-52BL](#) [120-104-12](#) [120-105-1-1-06BE](#) [120-105-1-1-06CE](#) [120-116-1-1-06BP](#) [120-116-1-1-10BP](#) [120-116-1-1-12BF](#) [120-123-12](#) [120-125-09](#) [120-125-12](#) [120-125-12Y](#) [120-125-52BL](#) [120-S002-12](#) [HC1B-7008-0375-0](#) [120-S001-09](#) [120-S002-09](#) [121-101-1-1-56BFC](#) [121-101-1-1-64BFC](#) [RAY-90-3.0\(100\)](#) [20675-2](#) [8S42-100FR-CS8184](#) [SAS-115-1-1048-1X](#) [SAS-160-1-1048-1X](#) [25T-GB](#) [RAY-103-10.0\(100\)](#) [RAY-103-4.0\(100\)](#) [4627-S](#) [3-1991136-0](#) [561-SL1000NYGY](#) [561-SL1000PP](#) [561-SL250FRPP](#)