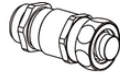
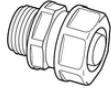


SILVYN® FPS

SILVYN® FPS is a highly flexible protection conduit made of PVC



SILVYN® MSK-M



SILVYN® USK/USK-M
IP54



SILVYN® US/US-M + EE-K
IP54



SILVYN® LKI/LKI-M
IP54



SILVYN® EE-K



Waterproof



Power chain



Corrosion-resistant

Benefits

- Dimensionally stable
- Crushable and extendable
- Highly oil and acid-resistant
- Liquidtight
- Corrosion-resistant

Application range

- Mechanical engineering
- In drag chains (SILVYN® CHAIN)
- Robot-building
- Moving applications
- Indoor applications

Product features

- Cadmium-free

Norm references / Approvals

- UL FILENUMBER E308201

Last Update (09.04.2018)

©2018 Lapp Group - Technical changes reserved

Product Management www.lappkabel.de

You can find the current technical data in the corresponding data sheet.

PN 0456 / 02_03.16

SILVYN® FPS

Product Make-up

PVC-insulated steel spring wire
Soft PVC outer sheath

Note

PU = 50 m (on request)

Technical Data

| | |
|------------------------|--|
| Classification ETIM 5: | ETIM 5.0 Class-ID: EC001177 ETIM 5.0 Class-Description: Protective plastic hose |
| Classification ETIM 6: | ETIM 6.0 Class-ID: EC001177 ETIM 6.0 Class-Description: Protective plastic hose |
| Certifications: | IEC EN 61386-23 |
| Colour delivered: | Grey |
| Material: | Soft PVC with insulated spring steel wire |
| Temperature range: | -25°C to +80°C |

Note

Photographs and graphics are not to scale and do not represent detailed images of the respective products.
Prices are net prices without VAT and surcharges. Sale to business customers only.

| Article number | Nominal size | ID x OD mm | Bending radius (mm) | Suitable for SILVYN® USK-M/US-M | Suitable for SILVYN® LKI-M/MSK-M |
|------------------------|--------------|-------------|---------------------|------------------------------------|-------------------------------------|
| SILVYN® FPS | | | | | |
| 61711550 | 10 | 7 x 10 | 8 | 10 x 1,0 | 12 x 1,5 |
| 61711590 | 14 | 10 x 14 | 10 | 12 x 1,5 | 16 x 1,5 |
| 61711630 | 17 | 12.7 x 17.0 | 13 | 16 x 1,5 | 20 x 1,5 |
| 61711670 | 19 | 14.7 x 19.0 | 15 | - | - |
| 61711710 | 21 | 16 x 21 | 17 | 20 x 1,5 | 25 x 1,5 |
| 61711750 | 27 | 21.6 x 27.0 | 20 | 25 x 1,5 | 32 x 1,5 |
| 61711790 | 36 | 29 x 36 | 25 | 32 x 1,5 | 40 x 1,5 |
| 61711830 | 45 | 38 x 45 | 36 | 40 x 1,5 | 50 x 1,5 |
| 61711910 | 56 | 48 x 56 | 40 | 50 x 1,5 | 63 x 1,5 |
| SILVYN® FPS 10M | | | | | |
| 61721690 | 10 | 7 x 10 | 8 | 10 x 1,0 | 12 x 1,5 |
| 61721700 | 14 | 10 x 14 | 10 | 12 x 1,5 | 16 x 1,5 |
| 61721710 | 17 | 12.7 x 17.0 | 13 | 16 x 1,5 | 20 x 1,5 |
| 61721720 | 19 | 14.7 x 19.0 | 15 | - | - |
| 61721730 | 21 | 16 x 21 | 17 | 20 x 1,5 | 25 x 1,5 |
| 61721740 | 27 | 21.6 x 27.0 | 20 | 25 x 1,5 | 32 x 1,5 |
| 61721750 | 36 | 29 x 36 | 25 | 32 x 1,5 | 40 x 1,5 |
| 61721760 | 45 | 38 x 45 | 36 | 40 x 1,5 | 50 x 1,5 |
| 61721780 | 56 | 48 x 56 | 40 | 50 x 1,5 | 63 x 1,5 |

Last Update (09.04.2018)
 ©2018 Lapp Group - Technical changes reserved
 Product Management www.lappkabel.de
 You can find the current technical data in the corresponding data sheet.
 PN 0456 / 02_03.16

X-ON Electronics

Largest Supplier of Electrical and Electronic Components

Click to view similar products for [Non-Heat Shrink Tubing and Sleeves](#) category:

Click to view products by [Lapp Kabel](#) manufacturer:

Other Similar products are found below :

[CTA-0053](#) [8429-9](#) [8445-7.5](#) [8450](#) [120-116-1-1-09BE](#) [120-116-1-1-09BF](#) [120-116-1-1-09BP](#) [120-116-1-1-12BE](#) [120-116-1-1-12BP](#) [120-123-06](#) [120-123-10](#) [120-125-12BL](#) [120-125-12R](#) [120-125-20R](#) [120-126-09](#) [120-126-09BL](#) [120-126-12](#) [120-126-12BL](#) [120-126-52](#) [120-126-52BL](#) [120-104-12](#) [120-105-1-1-06BE](#) [120-105-1-1-06CE](#) [120-116-1-1-06BP](#) [120-116-1-1-10BP](#) [120-116-1-1-12BF](#) [120-123-12](#) [120-125-09](#) [120-125-12](#) [120-125-12Y](#) [120-125-52BL](#) [120-S002-12](#) [HC1B-7008-0375-0](#) [120-S001-09](#) [120-S002-09](#) [121-101-1-1-56BFC](#) [121-101-1-1-64BFC](#) [RAY-90-3.0\(100\)](#) [20675-2](#) [8S42-100FR-CS8184](#) [SAS-115-1-1048-1X](#) [SAS-160-1-1048-1X](#) [25T-GB](#) [RAY-103-10.0\(100\)](#) [RAY-103-4.0\(100\)](#) [4627-S](#) [3-1991136-0](#) [561-SL1000NYGY](#) [561-SL1000PP](#) [561-SL250FRPP](#)