

SILVYN® US-M

SILVYN® US-M is a nickel-plated brass conduit fitting that offers IP40 / IP54 / IP66 protection degree depending on the used conduit



Temperature-resistant



Robust



Space requirement



Maximum vibration protection

Benefits

High tensile strength
Space-saving
Vibration protection
All-purpose
Fast and easy assembly

Application range

In combination with protective conduit:
SILVYN® AS/AS-P/EDU-AS/EMC AS-CU
Mechanical engineering
Plant engineering

Product features

Compact design

Last Update (10.04.2018)

©2018 Lapp Group - Technical changes reserved

Product Management www.lappkabel.de

You can find the current technical data in the corresponding data sheet.

PN 0456 / 02_03.16

SILVYN® US-M

Product Make-up

Metric connection thread
Hexagonal collar
Threaded sleeve
Sealing element
Cap nut

Technical Data

Classification ETIM 5:	ETIM 5.0 Class-ID: EC001180 ETIM 5.0 Class-Description: Screw connection for protective metallic hose
Classification ETIM 6:	ETIM 6.0 Class-ID: EC001180 ETIM 6.0 Class-Description: Screw connection for protective metallic hose
Material:	Body: nickel-plated brass Sealing ring: TPE
Protection rating:	IP 40 (with SILVYN® AS, EDU-AS and EMC AS-CU) IP 65 (with SILVYN® AS-P)
Temperature range:	-40°C to +125°C

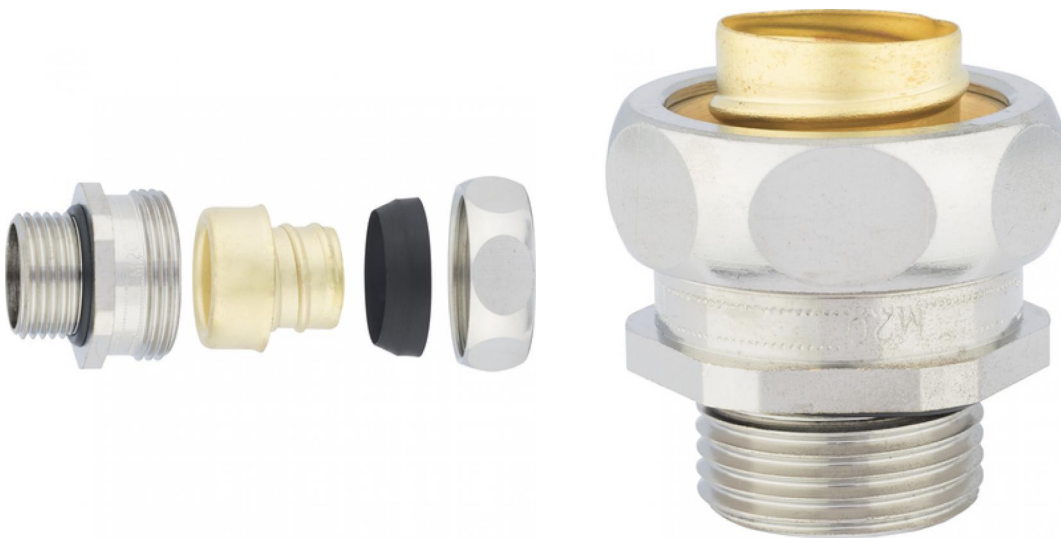
Note

Photographs and graphics are not to scale and do not represent detailed images of the respective products.
Prices are net prices without VAT and surcharges. Sale to business customers only.

Article number	Metric size	Clear opening (mm)	Suitable
SILVYN® US-M for SILVYN® AS			
55502611	10 x 1.0	6.5	10
55502612	12 x 1.5	9	14
55502613	16 x 1.5	12.5	17
55502614	20 x 1.5	16	21
55502615	25 x 1.5	21	27
55502616	32 x 1.5	27.5	36
55502617	40 x 1.5	35	45
55502618	50 x 1.5	45	56
55502619	63 x 1.5	45	56
SILVYN® US-M for SILVYN® AS-P			
55502621	10 x 1.0	6	10
55502622	12 x 1.5	8.5	14
55502623	16 x 1.5	11.5	17
55502624	20 x 1.5	15.5	21
55502625	25 x 1.5	20.5	27
55502626	32 x 1.5	27.5	36
55502627	40 x 1.5	35	45
55502628	50 x 1.5	45	56
55502629	63 x 1.5	45	56
SILVYN® US-M for SILVYN® EDU-AS / EMC AS-CU			
55502631	10 x 1.0	6	10
55502642	12 x 1.5	8.5	14
55502633	16 x 1.5	11	17
55502634	20 x 1.5	15.5	21
55502636	25 x 1.5	20.5	27
55502646	32 x 1.5	27.5	36
55502638	40 x 1.5	35	45
55502639	50 x 1.5	45	56
55502641	63 x 1.5	45	56

Last Update (10.04.2018)
 ©2018 Lapp Group - Technical changes reserved
 Product Management www.lappkabel.de
 You can find the current technical data in the corresponding data sheet.
 PN 0456 / 02_03.16

SILVYN® US-M



X-ON Electronics

Largest Supplier of Electrical and Electronic Components

Click to view similar products for [Conduit Fittings & Accessories](#) category:

Click to view products by [Lapp Kabel](#) manufacturer:

Other Similar products are found below :

[S53.35A](#) [260-416](#) [DM0240-1/2A](#) [817.612.0](#) [55506625](#) [1.511.2001.50](#) [1.533.1601.50](#) [1.533.2001.50](#) [52005810](#) [817.716.0](#) [712.015.0](#) [216-420](#) [2276](#) [2663-P](#) [C2070-P](#) [3582V](#) [2643-P](#) [4975](#) [2644-P](#) [90480](#) [2404-P](#) [1047561](#) [2723-P](#) [55506355](#) [1.513.1101.14](#) [55502461](#) [55502462](#) [55502463](#) [55502464](#) [55502473](#) [166-22214](#) [166-22215](#) [166-24800](#) [166-25801](#) [166-30318](#) [SHR-C1](#) [2037 12-20 LGR](#) [2037 16-24 LGR](#) [HP50SS](#) [55502470](#) [SH PA6 BL ND10](#) [5308 946](#) [295.012.0](#) [2955 M16](#) [2955 M25](#) [2955 M32](#) [2955 M40](#) [297.212.0](#) [297.240.0](#) [298.012.0](#)