

## SILVYN® US

SILVYN® US is a nickel-plated brass conduit insert for use with SILVYN® US-M or separately to cover sharp conduit endings



Temperature-resistant



Robust



Space requirement



Maximum vibration protection

### Benefits

High tensile strength  
Space-saving  
Vibration protection  
All-purpose

### Application range

In combination with protective conduit:  
SILVYN® AS/AS-P/EDU-AS/EMC AS-CU  
Mechanical engineering  
Plant engineering

### Product features

Compact design

## SILVYN® US

### Product Make-up

PG connection thread  
Hexagonal collar  
Threaded sleeve  
Sealing element  
Cap nut

### Technical Data

Classification ETIM 5:	ETIM 5.0 Class-ID: EC001180 ETIM 5.0 Class-Description: Screw connection for protective metallic hose
Classification ETIM 6:	ETIM 6.0 Class-ID: EC001180 ETIM 6.0 Class-Description: Screw connection for protective metallic hose
Material:	Body: nickel-plated brass Sealing ring: TPE
Protection rating:	IP 40 (with SILVYN® AS, EDU-AS and EMC AS-CU) IP 65 (with SILVYN® AS-P)
Temperature range:	-40°C to +125°C

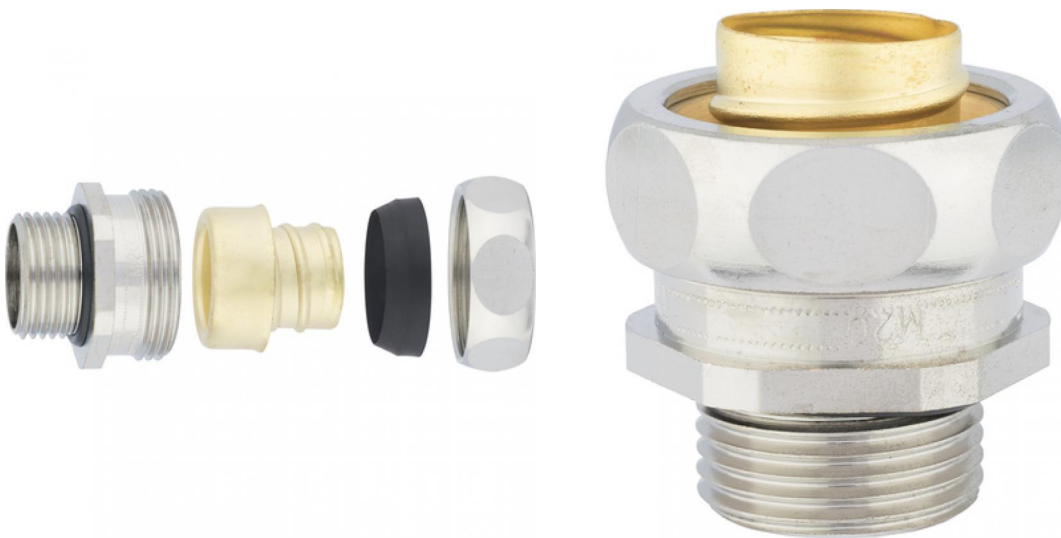
### Note

Photographs and graphics are not to scale and do not represent detailed images of the respective products.  
Prices are net prices without VAT and surcharges. Sale to business customers only.

Article number	PG size	Clear opening (mm)	Suitable
SILVYN® US for SILVYN® AS			
55502661	7	6.5	10
55502662	9	10	14
55502663	11	12.5	17
55502664	13.5	14.5	19
55502665	16	16	21
55502666	21	21.5	27
55502667	29	29	36
55502668	36	38	45
55502669	48	49	56
SILVYN® US for SILVYN® AS-P			
55502671	7	6	10
55502672	9	8.5	14
55502673	11	11.5	17
55502674	13.5	13.5	19
55502675	16	15.5	21
55502676	21	20.5	27
55502677	29	27.5	36
55502678	36	36.5	45
55502679	48	47.5	56
SILVYN® US for SILVYN® EDU-AS / EMC AS-CU			
55502680	7	6	10
55502689	9	8.5	14
55502682	11	11.5	17
55502683	13.5	13.5	19
55502684	16	15.5	21
55502685	21	20.5	27
55502694	29	27.5	36
55502687	36	36.5	45
55502688	48	47.5	56

Last Update (10.04.2018)  
 ©2018 Lapp Group - Technical changes reserved  
 Product Management www.lappkabel.de  
 You can find the current technical data in the corresponding data sheet.  
 PN 0456 / 02\_03.16

**SILVYN® US**



## X-ON Electronics

Largest Supplier of Electrical and Electronic Components

*Click to view similar products for [Conduit Fittings & Accessories](#) category:*

*Click to view products by [Lapp Kabel](#) manufacturer:*

Other Similar products are found below :

[S53.35A](#) [260-416](#) [DM0240-1/2A](#) [817.612.0](#) [55506625](#) [1.511.2001.50](#) [1.533.1601.50](#) [1.533.2001.50](#) [52005810](#) [817.716.0](#) [712.015.0](#) [216-420](#) [2276](#) [2663-P](#) [C2070-P](#) [3582V](#) [2643-P](#) [4975](#) [2644-P](#) [90480](#) [2404-P](#) [1047561](#) [2723-P](#) [55506355](#) [1.513.1101.14](#) [55502461](#) [55502462](#) [55502463](#) [55502464](#) [55502473](#) [166-22214](#) [166-22215](#) [166-24800](#) [166-25801](#) [166-30318](#) [SHR-C1](#) [2037 12-20 LGR](#) [2037 16-24 LGR](#) [HP50SS](#) [55502470](#) [SH PA6 BL ND10](#) [5308 946](#) [295.012.0](#) [2955 M16](#) [2955 M25](#) [2955 M32](#) [2955 M40](#) [297.212.0](#) [297.240.0](#) [298.012.0](#)