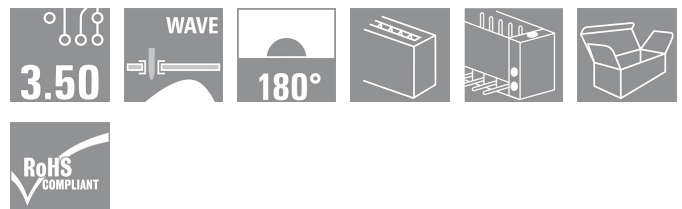
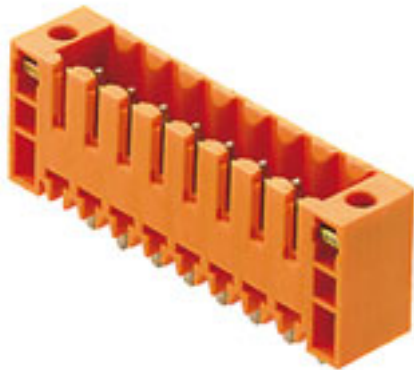


BL/SL 3.50 series
SL 3.50/06/180F 3.2SN OR BX

Weidmüller Interface GmbH & Co. KG
 Klingenbergstraße 16
 D-32758 Detmold
 Germany
 Fon: +49 5231 14-0
 Fax: +49 5231 14-2083
 www.weidmueller.com



Male connector with 3.50 mm pitch for wave soldering
 The male connector is available in open, closed and flange versions. The male connectors provide space for labelling and can be coded. Packed in cardboard box.

- 250 V (IEC) / 300 V (UL)
- 17 A (IEC) / 10 A (UL)

General ordering data

| | |
|------------|---|
| Order No. | 1607540000 |
| Type | SL 3.50/06/180F 3.2SN OR BX |
| Version | PCB plug-in connector, male header, Flange, Solder connection, 3.50 mm, No. of poles: 6, 180°, Solder pin length (l): 3.2 mm, tinned, Orange, Box |
| GTIN (EAN) | 4008190177140 |

**BL/SL 3.50 series
SL 3.50/06/180F 3.2SN OR BX**

Weidmüller Interface GmbH & Co. KG
 Klingenbergstraße 16
 D-32758 Detmold
 Germany
 Fon: +49 5231 14-0
 Fax: +49 5231 14-2083
 www.weidmueller.com

Technical data
Dimensions

Net weight 1.99 g

System parameters

| | | | |
|---|-------------------|--|------------------------------|
| Product family | BL/SL 3.50 series | Mounting onto the PCB | Solder connection |
| Outgoing elbow | 180° | Pitch in mm (P) | 3.5 mm |
| Pitch in inches (P) | 0.138 inch | No. of poles | 6 |
| Solder pin length (l) | 3.2 mm | Pin dimensions | d = 1.2 mm, Octagonal |
| Can be coded | Yes | Number of rows | 1 |
| Number of solder pins per pole | 1 | Solder eyelet hole diameter (D) | 1.3 mm |
| Solder eyelet hole diameter tolerance (D)+ 0,1 mm | | L1 in mm | 17.5 mm |
| L1 in inches | 0.689 inch | Insulation resistance | 10 ³ Ω |
| Touch-safe protection acc. to DIN VDE 0470 | IP 10 | Touch-safe protection acc. to DIN VDE 57 106 | Safe from back-of-hand touch |


Material data

| | | | |
|----------------------------------|--------|---------------------------------------|--------|
| Insulating material | PBT | Colour | Orange |
| Insulating material group | IIIa | Flammability class UL 94 | V-0 |
| CTI | ≥ 200 | Contact material | CuSn |
| Contact surface | tinned | Continuous operating temp., min. | -25 °C |
| Continuous operating temp., max. | 100 °C | Max. relative humidity during storage | 80 % |


DIN IEC rating data

| | | | |
|--|-------------------|---|--------|
| Rated current, min. no. of poles (Tu=20°C) | 17 A | Rated current, max. no. of poles (Tu=20°C) | 12 A |
| Rated current, number of poles (Tu=40°C), min | 14.5 A | Rated current, number of poles (Tu=40°C), max. | 10 A |
| Rated voltage for surge voltage class / pollution degree III/3 | 160 V | Rated impulse voltage for surge voltage class/ contamination degree III/3 | 2.5 kV |
| Rated voltage for surge voltage class / pollution degree III/2 | 160 V | Rated impulse voltage for surge voltage class/ pollution degree III/2 | 2.5 kV |
| Rated voltage for surge voltage class / pollution degree II/2 | 320 V | Rated impulse voltage for surge voltage class/ pollution degree II/2 | 2.5 kV |
| Short-time withstand current resistance | 3 x 1s with 100 A | | |

CSA rating data

| | | | |
|-----------------------------|---|-----------------------------|-------|
| Institute (CSA) |  | Rated voltage (Use group B) | 300 V |
| Rated current (use group B) | 10 A | Rated voltage (use group D) | 300 V |
| Rated current (use group D) | 10 A | | |

UL 1059 rating data

| | | | |
|-----------------------------|---|-----------------------------|-------|
| Institute (UR) |  | Rated voltage (use group B) | 300 V |
| Rated current (use group B) | 10 A | Rated voltage (use group D) | 300 V |
| Rated current (use group D) | 10 A | | |

**BL/SL 3.50 series
SL 3.50/06/180F 3.2SN OR BX****Weidmüller Interface GmbH & Co. KG**
Klingenbergstraße 16
D-32758 Detmold
Germany
Fon: +49 5231 14-0
Fax: +49 5231 14-2083
www.weidmueller.com**Technical data****Classifications**

| | | | |
|------------|-------------|------------|-------------|
| ETIM 3.0 | EC001284 | UNSPSC | 30-21-18-10 |
| eClass 4.1 | 27-26-07-01 | eClass 5.1 | 27-26-07-04 |
| eClass 6.0 | 27-26-07-04 | eClass 7.0 | 27-44-04-02 |

Notes

- Notes
- Additional colours on request
 - Gold-plated contact surfaces on request
 - Rated current related to rated cross-section and min. No. of poles.
 - P on drg. = pitch
 - Rated data refer only to the component itself. Clearance and creepage distances to other components are to be designed in accordance with the relevant application standards.

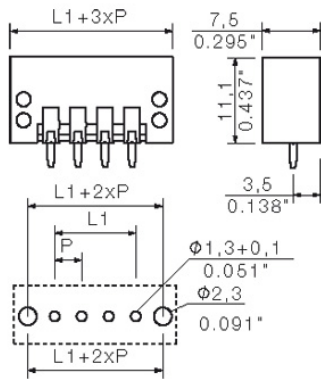
Downloads

CAD Library (P-CAD Format - ASCII) [SL.LIA](#)
CAD Library (P-CAD Format - Standard) [SL.LIB](#)
[3-D model](#)

BL/SL 3.50 series
SL 3.50/06/180F 3.2SN OR BX

Weidmüller Interface GmbH & Co. KG
 Klingenbergstraße 16
 D-32758 Detmold
 Germany
 Fon: +49 5231 14-0
 Fax: +49 5231 14-2083
 www.weidmueller.com

Drawings



**BL/SL 3.50 series
SL 3.50/06/180F 3.2SN OR BX**

Weidmüller Interface GmbH & Co. KG
 Klingenbergstraße 16
 D-32758 Detmold
 Germany
 Fon: +49 5231 14-0
 Fax: +49 5231 14-2083
 www.weidmueller.com

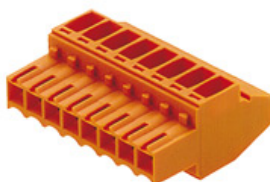
Mating connector (conditionally pluggable)
BL 3.5/180LH


Female connectors with clamping yoke screw system for connecting conductors at 3.50 mm pitch. They include space for labelling and can be coded.

- 0.20 - 1.5 mm² (IEC) / 28 - 14 AWG (UL)
- 250 V (IEC) / 300 V (UL)
- 17 A (IEC) / 10 A (UL)

General ordering data

| Order No. | Type | Version | GTIN (EAN) |
|----------------------------|---------------------------|---|---------------|
| 1687920000 | BL 3.50/06/180LH SN BK BX | PCB plug-in connector, female plug, 3.50 mm, No. of poles: 6, 180°, Clamping yoke connection, Clamping range, rated connection, max.: 1.5 mm ² , Box | 4008190853471 |
| 1687690000 | BL 3.50/06/180LH SN OR BX | PCB plug-in connector, female plug, 3.50 mm, No. of poles: 6, 180°, Clamping yoke connection, Clamping range, rated connection, max.: 1.5 mm ² , Box | 4008190853242 |

BL 3.5/90


Female connectors with clamping yoke screw system for connecting conductors at 3.50 mm pitch. They include space for labelling and can be coded.

- 0.20 - 1.5 mm² (IEC) / 28 - 14 AWG (UL)
- 250 V (IEC) / 300 V (UL)
- 17 A (IEC) / 10 A (UL)

General ordering data

| Order No. | Type | Version | GTIN (EAN) |
|----------------------------|------------------------|--|---------------|
| 1638590000 | BL 3.50/06/90 SN OR BX | PCB plug-in connector, female plug, 3.50 mm, No. of poles: 6, 90°, Clamping yoke connection, Clamping range, rated connection, max.: 1.5 mm ² , Box | 4008190276133 |
| 1638820000 | BL 3.50/06/90 SN BK BX | PCB plug-in connector, female plug, 3.50 mm, No. of poles: 6, 90°, Clamping yoke connection, Clamping | 4008190276362 |

BL/SL 3.50 series
SL 3.50/06/180F 3.2SN OR BX

Weidmüller Interface GmbH & Co. KG
 Klingenbergstraße 16
 D-32758 Detmold
 Germany
 Fon: +49 5231 14-0
 Fax: +49 5231 14-2083
 www.weidmueller.com

Mating connector (conditionally pluggable)

range, rated connection,
 max.: 1.5 mm², Box

BL 3.5/270


Female connectors with clamping yoke screw system for connecting conductors at 3.50 mm pitch. They include space for labelling and can be coded.

- 0.20 - 1.5 mm² (IEC) / 28 - 14 AWG (UL)
- 250 V (IEC) / 300 V (UL)
- 17 A (IEC) / 10 A (UL)

General ordering data

| Order No. | Type | Version | GTIN (EAN) |
|----------------------------|-------------------------|--|---------------|
| 1639740000 | BL 3.50/06/270 SN BK BX | PCB plug-in connector, female plug, 3.50 mm, No. of poles: 6, 270°, Clamping yoke connection, Clamping range, rated connection, max.: 1.5 mm ² , Box | 4008190277291 |
| 1639510000 | BL 3.50/06/270 SN OR BX | PCB plug-in connector, female plug, 3.50 mm, No. of poles: 6, 270°, Clamping yoke connection, Clamping range, rated connection, max.: 1.5 mm ² , Box | 4008190277062 |

BL 3.5/180


Female connectors with clamping yoke screw system for connecting conductors at 3.50 mm pitch. They include space for labelling and can be coded.

- 0.20 - 1.5 mm² (IEC) / 28 - 14 AWG (UL)
- 250 V (IEC) / 300 V (UL)
- 17 A (IEC) / 10 A (UL)

General ordering data

| Order No. | Type | Version | GTIN (EAN) |
|----------------------------|-------------------------|--|---------------|
| 1597400000 | BL 3.50/06/180 SN OR BX | PCB plug-in connector, female plug, 3.50 mm, No. of poles: 6, 180°, Clamping yoke connection, Clamping range, rated connection, max.: 1.5 mm ² , Box | 4008190119058 |
| 1610180000 | BL 3.50/06/180 SN BK BX | PCB plug-in connector, female plug, 3.50 mm, No. of poles: 6, 180°, Clamping | 4008190083458 |

Creation date May 29, 2012 2:32:45 PM CEST

**BL/SL 3.50 series
SL 3.50/06/180F 3.2SN OR BX**

Weidmüller Interface GmbH & Co. KG
 Klingenbergstraße 16
 D-32758 Detmold
 Germany
 Fon: +49 5231 14-0
 Fax: +49 5231 14-2083
 www.weidmueller.com

Mating connector (conditionally pluggable)

yoke connection, Clamping
 range, rated connection,
 max.: 1.5 mm², Box

BLIDCB 3.5



Female connectors for fast wiring with IDC system for connecting conductors at 3.50 mm pitch. They include space for labelling and can be coded.

- 0.35 - 0.5 mm² (IEC) / 22 - 20 AWG (UL)
- 250 V (IEC) / 300 V (UL)
- 6 A (IEC) / 7 A (UL)

General ordering data

| Order No. | Type | Version | GTIN (EAN) |
|----------------------------|---------------------------|--|---------------|
| 1751420000 | BLIDCB 3.50/06/- SN OR BX | PCB plug-in connector, female plug, 3.50 mm, No. of poles: 6, 90°/270°, IDC connection, Clamping range, rated connection, max.: 0.5 mm ² , Box | 4032248174355 |
| 1770710000 | BLIDCB 3.50/06/- SN BK BX | PCB plug-in connector, female plug, 3.50 mm, No. of poles: 6, 90°/270°, IDC connection, Clamping range, rated connection, max.: 0.5 mm ² , Box | 4032248174492 |

**BL/SL 3.50 series
SL 3.50/06/180F 3.2SN OR BX**

Weidmüller Interface GmbH & Co. KG
 Klingenbergstraße 16
 D-32758 Detmold
 Germany
 Fon: +49 5231 14-0
 Fax: +49 5231 14-2083
 www.weidmueller.com

Mating connector (fully pluggable)
BLIDCB 3.5F


Female connectors for fast wiring with IDC system for connecting conductors at 3.50 mm pitch. They include space for labelling and can be coded.

- 0.35 - 0.5 mm² (IEC) / 22 - 20 AWG (UL)
- 250 V (IEC) / 300 V (UL)
- 6 A (IEC) / 7 A (UL)

General ordering data

| Order No. | Type | Version | GTIN (EAN) |
|----------------------------|----------------------------|---|---------------|
| 1751490000 | BLIDCB 3.50/06/-F SN OR BX | PCB plug-in connector, female plug, 3.50 mm, No. of poles: 6, 90°/270°, IDC connection, Clamping range, rated connection, max.: 0.5 mm ² , Box | 4032248174423 |
| 1770780000 | BLIDCB 3.50/06/-F SN BK BX | PCB plug-in connector, female plug, 3.50 mm, No. of poles: 6, 90°/270°, IDC connection, Clamping range, rated connection, max.: 0.5 mm ² , Box | 4032248174560 |

BL 3.5/180F


Female connectors with clamping yoke screw system for connecting conductors at 3.50 mm pitch. They include space for labelling and can be coded.

- 0.20 - 1.5 mm² (IEC) / 28 - 14 AWG (UL)
- 250 V (IEC) / 300 V (UL)
- 17 A (IEC) / 10 A (UL)

General ordering data

| Order No. | Type | Version | GTIN (EAN) |
|----------------------------|--------------------------|---|---------------|
| 1615820000 | BL 3.50/06/180F SN BK BX | PCB plug-in connector, female plug, 3.50 mm, No. of poles: 6, 180°, Clamping yoke connection, Clamping range, rated connection, max.: 1.5 mm ² , Box | 4008190062538 |
| 1606680000 | BL 3.50/06/180F SN OR BX | PCB plug-in connector, female plug, 3.50 mm, No. of poles: 6, 180°, Clamping yoke connection, Clamping | 4008190026165 |

**BL/SL 3.50 series
SL 3.50/06/180F 3.2SN OR BX**

Weidmüller Interface GmbH & Co. KG
 Klingenbergstraße 16
 D-32758 Detmold
 Germany
 Fon: +49 5231 14-0
 Fax: +49 5231 14-2083
 www.weidmuller.com

Mating connector (fully pluggable)

range, rated connection,
 max.: 1.5 mm², Box

BL 3.5/270F


Female connectors with clamping yoke screw system for connecting conductors at 3.50 mm pitch. They include space for labelling and can be coded.

- 0.20 - 1.5 mm² (IEC) / 28 - 14 AWG (UL)
- 250 V (IEC) / 300 V (UL)
- 17 A (IEC) / 10 A (UL)

General ordering data

| Order No. | Type | Version | GTIN (EAN) |
|----------------------------|--------------------------|---|---------------|
| 1639970000 | BL 3.50/06/270F SN OR BX | PCB plug-in connector, female plug, 3.50 mm, No. of poles: 6, 270°, Clamping yoke connection, Clamping range, rated connection, max.: 1.5 mm ² , Box | 4008190277529 |
| 1640200000 | BL 3.50/06/270F SN BK BX | PCB plug-in connector, female plug, 3.50 mm, No. of poles: 6, 270°, Clamping yoke connection, Clamping range, rated connection, max.: 1.5 mm ² , Box | 4008190277765 |

BL 3.5/90F


Female connectors with clamping yoke screw system for connecting conductors at 3.50 mm pitch. They include space for labelling and can be coded.

- 0.20 - 1.5 mm² (IEC) / 28 - 14 AWG (UL)
- 250 V (IEC) / 300 V (UL)
- 17 A (IEC) / 10 A (UL)

General ordering data

| Order No. | Type | Version | GTIN (EAN) |
|----------------------------|-------------------------|--|---------------|
| 1639280000 | BL 3.50/06/90F SN BK BX | PCB plug-in connector, female plug, 3.50 mm, No. of poles: 6, 90°, Clamping yoke connection, Clamping range, rated connection, max.: 1.5 mm ² , Box | 4008190276829 |
| 1639050000 | BL 3.50/06/90F SN OR BX | PCB plug-in connector, female plug, 3.50 mm, No. of poles: 6, 90°, Clamping | 4008190276591 |

BL/SL 3.50 series
SL 3.50/06/180F 3.2SN OR BX

Weidmüller Interface GmbH & Co. KG
Klingenbergstraße 16
D-32758 Detmold
Germany
Fon: +49 5231 14-0
Fax: +49 5231 14-2083
www.weidmueller.com

Mating connector (fully pluggable)

yoke connection, Clamping
range, rated connection,
max.: 1.5 mm², Box

**BL/SL 3.50 series
SL 3.50/06/180F 3.2SN OR BX**

Weidmüller Interface GmbH & Co. KG
 Klingenbergstraße 16
 D-32758 Detmold
 Germany
 Fon: +49 5231 14-0
 Fax: +49 5231 14-2083
 www.weidmueller.com

Accessories
Additional accessories

No task is too small when creating the perfect solution.

Connections form just one part of the overall process. Small details are often the key to the perfect solution in applications where potentials are tested, grouped or even isolated.

A system is not a system without small but useful details:

- Test plugs - ensure reliable pick-up from diagnostic sockets
- Cross-connectors - ensure a stable electrical distribution contact directly at the connection
- Compartment partition elements - divide a large number of male connectors into several separate socket connector channels
- Locks and clips - optional vibration-resistant clip-on connection or mounting for male and female connectors

In tandem with the manufacturing process and application - more accessories = smaller workload

General ordering data

| Order No. | Type | Version | GTIN (EAN) |
|----------------------------|-----------------|--|---------------|
| 1669310000 | BL/SL 3.5 VR OR | PCB plug-in connector, Accessories, Latches, Orange, No. of poles: 1 | 4008190428488 |
| 1669300000 | BL/SL 3.5 VR SW | PCB plug-in connector, Accessories, Latches, Black, No. of poles: 1 | 4008190428471 |

Coding elements

Only connects what is supposed to be connected: the right connection at the right place.

Coding elements and locking devices clearly assign connecting elements during the manufacturing process and operation

The coding elements and locking devices are inserted prior to assembly or during the cable assembly phase. The Weidmüller alternative: configure online using the variant configurator to precode prior to delivery. Incorrect assembly on the circuit board and incorrect plugging of connecting elements is no longer possible. The advantage: no troubleshooting during manufacture and no operational errors by the user.

General ordering data

| Order No. | Type | Version | GTIN (EAN) |
|----------------------------|-----------------|---|---------------|
| 1693430000 | BL SL 3.5 KO OR | PCB plug-in connector, Accessories, Coding element, Orange, No. of poles: 1 | 4008190867447 |

Data sheet...**BL/SL 3.50 series**
SL 3.50/06/180F 3.2SN OR BX**Weidmüller Interface GmbH & Co. KG**
Klingenbergstraße 16
D-32758 Detmold
Germany
Fon: +49 5231 14-0
Fax: +49 5231 14-2083
www.weidmueller.com**Accessories**[1610100000](#) BL SL 3.5 KO SWPCB plug-in connector,
Accessories, Coding
element, Black, No. of
poles: 1

4008190187637

X-ON Electronics

Largest Supplier of Electrical and Electronic Components

Click to view similar products for [Pluggable Terminal Blocks](#) category:

Click to view products by [Weidmuller](#) manufacturer:

Other Similar products are found below :

[57.404.7553](#) [57.504.0053.7](#) [57.510.0053](#) [57.910.6153](#) [01.112.1453](#) [CTB932VE/6](#) [MC 1.5/ 6-ST-3.5 GY AU](#) [ET02015000J0G](#) [734-104](#) [734-304](#) [8-141-P](#) [860505](#) [860516](#) [860810](#) [861908](#) [8726](#) [GBPACX-12](#) [93.731.4953.0](#) [PV05-5,08-K](#) [PVP02-5,00](#) [PVP04-3,50](#) [PVS02-5,00](#) [1-1986160-3](#) [H-10](#) [EC350V-05P](#) [ECH350V-06P](#) [EK381V4L-04P](#) [ELFH09150](#) [ELFH16150](#) [ELFP03110](#) [ELFP10210](#) [ELFT06250](#) [ELFT07250](#) [ELVF09400](#) [ELVP03100](#) [ELXH071G0E](#) [ELXP041G0](#) [ELXT046G0](#) [1700101](#) [1700410](#) [1700425](#) [1703176](#) [1703243](#) [1703634](#) [1705229](#) [1710175](#) [1714537](#) [1719600](#) [1729386](#) [1734692](#)