

REVISION RECORD

REV	ECN	DESCRIPTION	DRFT	DATE
-----	-----	-------------	------	------

Detailed product Description:

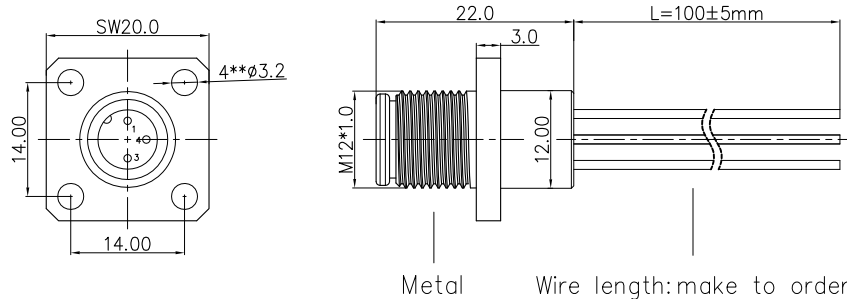
1. Waterproof connector rating is IP67
2. Protected from dust and water during immersion, resistant to many oils and chemical etc
3. Wire cross section: 0.75mm<sup>2</sup>

Electrical character:

1. Rating voltage: 250V AC/DC
2. Insulation resistance: >100MΩ
3. Rating current: 4A
4. Contact resistance of the connector ≤ 10 mΩ

Other Specification:

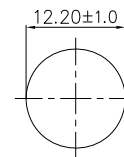
1. Contact PIN: Phosphor Copper with Gold plating
2. Coupling nut/screw: Brass with nickel plating
3. Insulation plastic: PA66+GF
4. Degree of protection: IP67
5. Operating temperature: -25℃ ~ +85℃



Electrical character

Prat Number	Contacts	Rated Voltage		Rated Current	Contact Resistance
		A/C	D/C		
SM12-D90C-A3M-2A010		250V	250V	4A	10mΩ
SM12-D90C-A4M-2A010		250V	250V	4A	10mΩ
SM12-D90C-A5M-2A010		60V	60V	4A	10mΩ
SM12-D90C-A8M-2A010		30V	30V	2A	10mΩ
SM12-D90C-A12M-2A010		30V	30V	1.5A	10mΩ
SM12-D90C-B5M-2A010		60V	60V	4A	10mΩ
SM12-D90C-D4M-2A010		250V	250V	4A	10mΩ

Panel mounted



SM12-D90C-A3M-2A012

Wire length

DETACHED LISTS	PART NO.: /		宁波高松电子有限公司 NINGBO DEGSON ELECTRICAL CO., LTD	
	APPD: Alam 9/10/15"		NAME: SM12-D90C-XXM-2A010	
	CHKD: Aaron 9/2/15"		TITLE: CUSTOMER DRAWING	
	DRFT: CKZ 08/11/15"		REV	DO
	THIRD ANGLE PROJECTION		DRAWING NO.: SM12-D90C-AXM-2A012	SHEET 1/1
		MM (INCH)	DO NOT SCALE DRAWING	SCALE 1:1

## X-ON Electronics

Largest Supplier of Electrical and Electronic Components

*Click to view similar products for [Specialised Cables category](#):*

*Click to view products by [Degson manufacturer](#):*

Other Similar products are found below :

[GP-IE515546DS-002](#) [96CB-L2020PIB2](#) [1200740161](#) [R7ACAB003S](#) [R88ACAKA0015SRE](#) [R88ACAWL005SDE](#) [R88ACRGB010C](#)  
[R88ACRGD0R3C](#) [R88ACRGD0R3CBS](#) [R88ACRKA020CRE](#) [1300660201](#) [1971465-2](#) [22733-8](#) [2R7004A20F060](#) [SSL009PC2DC012N](#)  
[FC2A-KC6C](#) [FZVS415M](#) [CCSFCBF2](#) [R7ACAB005S](#) [R88ACAGD003SRE](#) [R88ACAGE005BRE](#) [R88ACAKE003SRE](#) [R88ACAKE005SRE](#)  
[R88ACAKE010SRE](#) [R88ACRKM010SRE](#) [R88AFIK222RE](#) [XS2WM12PUR4SA10M](#) [XS2WM12PVC4SA10M](#) [05AU05](#) [UCABLE](#)  
[10114734-2010LF](#) [R88ACRKC015NRE](#) [XW2Z010H3](#) [XW2Z010H1](#) [5-1589827-8](#) [861084-1](#) [XW2Z200JB24](#) [CR4000A76M020](#)  
[1300140039](#) [CR4000A76M005](#) [CR4006A76M005](#) [10077488-N0550FDLF](#) [XW2ZRY150C](#) [I4JPBJLUXX100](#) [I4JPBJLUXX50](#) [CM06W](#)  
[CM08](#) [POE004](#) [0243 009 05](#) [0243 009 20](#)