

REVISION RECORD				
REV	ECN	DESCRIPTION	DRFT	DATE

Detailed product Description:
 1.Waterproof connector rating is IP65/IP67
 2.Protected from dust and water during immersion,
 resistant to many oils and chemical etc

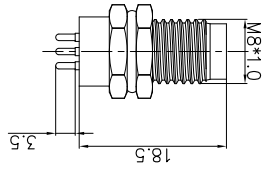
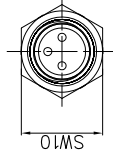
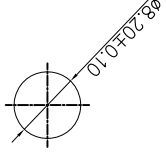
Electrical character:

- 1.Rating voltage: 60V AC/DC
- 2.Insulation resistance: >100MΩ
- 3.Rating current: 3A
- 4.Contact resistance of the connector≤10 mΩ

Other Specification:

- 1.Contact PIN:Phosphor Copper with Gold plating
- 2.Coupling nut/screw:Brass with nickel plating
- 3.Insulation plastic:PA66+GF
- 4.Degree of protection:IP65/67
- 5.Operating temperature: -25℃~+85℃

Panel mounted



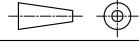
Electrical character

Prat Number	Contacts	Rated Voltage		Rated Current	Contact Resistance
		A/C	D/C		
SP-M8A-03P-MM-SF7001-00B(H)		60V	60V	3A	10mΩ
SP-M8A-04P-MM-SF7001-00B(H)		30V	30V	3A	10mΩ
SP-M8B-05P-MM-SF7001-00B(H)		30V	30V	3A	10mΩ
SP-M8A-06P-MM-SF7001-00B(H)		30V	30V	1.5A	10mΩ
SP-M8A-08P-MM-SF7001-00B(H)		30V	30V	1.5A	10mΩ

DETACHED LISTS

PART NO.:	/
NAME:	SP-M8X-XXP-MM-SF7001-00B(H)
APPD:	Alom 8/10/16"
CHKD:	Aaron 8/2/16"
DRFT:	CKZ 07/11/16"
TITLE:	CUSTOMER DRAWING
REV	DO
SHEET	1/1
SCALE	1:1

THIRD ANGLE PROJECTION



MM (INCH)

DO NOT SCALE DRAWING

SCALE

X-ON Electronics

Largest Supplier of Electrical and Electronic Components

Click to view similar products for [Circular MIL Spec Connector](#) category:

Click to view products by [Degson](#) manufacturer:

Other Similar products are found below :

[89075GULPR](#) [0025-262-542](#) [0025-264-3014](#) [58-570121-04S](#) [0134-213-1208](#) [0134-213-2209](#) [0025-258-000](#) [60-042022-07P](#) [60-042022-19P](#)
[60-042022-23P](#) [60-042217-10P](#) [60-042217-11P](#) [0114-201-1278](#) [012-0467-000](#) [602GB06EG24-61SN](#) [0134-201-1207](#) [0134-213-1006](#) [6104-](#)
[207-2302](#) [6104-208-1902](#) [61-168211-04P](#) [61-168617-10P](#) [6131-202-19149P](#) [6131-204-21149P](#) [6131-208-13149P](#) [6131-209-17149P](#) [6131-](#)
[210-11149P](#) [6131-211-19149P](#) [6131-216-19149P](#) [6131-259-21149P](#) [6131-259-23149P](#) [6131-265-17149P](#) [6131-265-19149P](#) [CS3100A18-1P-](#)
[472](#) [CS3100A-36-77P](#) [CS3101A-16-55P](#) [CS3102A-10SL-55P](#) [CS3102A-14S-58P](#) [CS3102A-18-1P116](#) [CS3102A-32-17P](#) [CS3102A32-25S](#)
[CS3102C18-4P-472](#) [CS3106A10SL3S004](#) [CS3106A-18-73S](#) [CS3108A-14S-52S](#) [CS3108A-28-51S](#) [6162-233-1277](#) [6162-324-1231](#)
[M243082296Z](#) [M2884010AC1S1](#) [CT0-24-10SC](#)