

REVISION RECORD			
REV	ECN	DESCRIPTION	DATE

Detailed product Description:

1. Waterproof connector rating is IP65/IP67
2. Protected from dust and water during immersion,
3. resistant to many oils and chemical etc
3. Wire cross section: 0.25mm²

Electrical character:

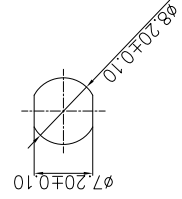
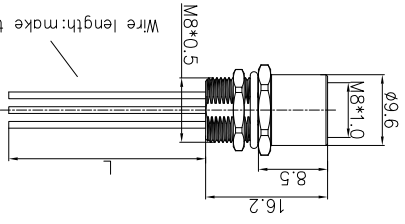
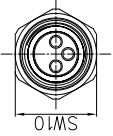
1. Rating voltage: 60V AC/DC
2. Insulation resistance: >100MΩ
3. Rating current: 3A
4. Contact resistance of the connector ≤ 10 mΩ

Other Specification:

1. Contact P1N: Phosphor Copper with Gold plating
2. Coupling nut/screw: Brass with nickel plating
3. Insulation plastic: PA66+GF
4. Degree of protection: IP65/67
5. Operating temperature: -25℃~+85℃

Electrical character

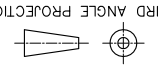
Prat Number	Contacts	Rated Voltage		Rated Current	Contact Resistance
		A/C	D/C		
SM8-S50C-A2F-2AXXX		100V	100V	4A	10mΩ
SM8-S50C-A3F-2AXXX		60V	60V	3A	10mΩ
SM8-S50C-A4F-2AXXX		30V	30V	3A	10mΩ
SM8-S50C-B5F-2AXXX		30V	30V	3A	10mΩ
SM8-S50C-A6F-2AXXX		30V	30V	1.5A	10mΩ



Panel mounted

PART NO.:		/	
NAME:		SM8-S50C-XXF-2AXXX	
APPD:	Alom 8/10/16"	CHKD:	Aaron 8/2/16"
DRAFT:	CKZ 07/11/16"	TITLE: CUSTOMER DRAWING	
DRWING NO.:	DRAWING NO.:		
SHEET	1/1	SHEET	1/1
SCALE	1:1	SCALE	1:1

DETACHED LISTS



THIRD ANGLE PROJECTION

MM (INCH)

DO NOT SCALE DRAWING

SCALE

1:1

X-ON Electronics

Largest Supplier of Electrical and Electronic Components

Click to view similar products for [Circular MIL Spec Connector](#) category:

Click to view products by [Degson](#) manufacturer:

Other Similar products are found below :

[89075GULPR](#) [0025-262-542](#) [0025-264-3014](#) [58-570121-04S](#) [0134-213-1208](#) [0134-213-2209](#) [0025-258-000](#) [60-042022-07P](#) [60-042022-19P](#)
[60-042022-23P](#) [60-042217-10P](#) [0114-201-1278](#) [012-0467-000](#) [602GB06EG24-61SN](#) [0134-201-1207](#) [0134-213-1006](#) [6104-207-2302](#) [6104-](#)
[208-1902](#) [61-168211-04P](#) [61-168617-10P](#) [6131-202-19149P](#) [6131-204-21149P](#) [6131-208-13149P](#) [6131-209-17149P](#) [6131-210-11149P](#) [6131-](#)
[211-19149P](#) [6131-216-19149P](#) [6131-259-21149P](#) [6131-259-23149P](#) [6131-265-17149P](#) [6131-265-19149P](#) [CS3100A18-1P-472](#) [CS3100A-36-](#)
[77P](#) [CS3101A-16-55P](#) [CS3102A-10SL-55P](#) [CS3102A-14S-58P](#) [CS3102A-32-17P](#) [CS3102A32-25S](#) [CS3102C18-4P-472](#)
[CS3106A10SL3S004](#) [CS3106A-18-73S](#) [CS3108A-14S-52S](#) [CS3108A-28-51S](#) [6162-233-1277](#) [6162-324-1231](#) [M243082296Z](#)
[M2884010AC1S1](#) [CT0-24-10SC](#) [CT0M20-7PCAU](#) [M28840/17AC1G3](#)