



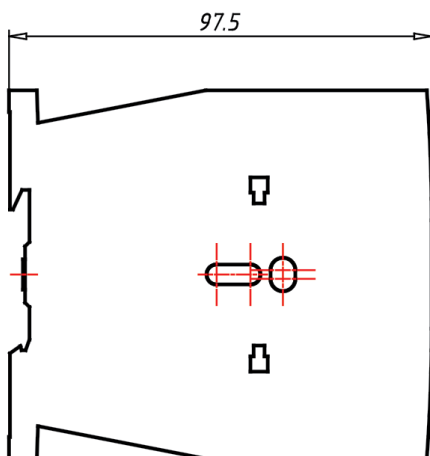
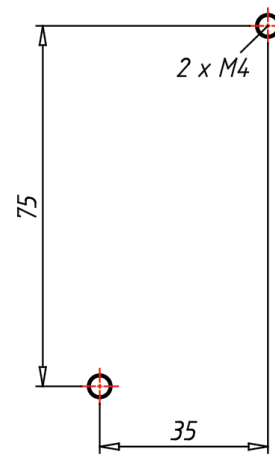
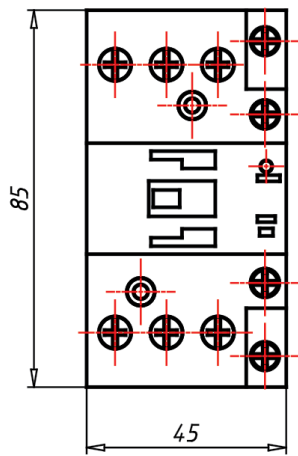
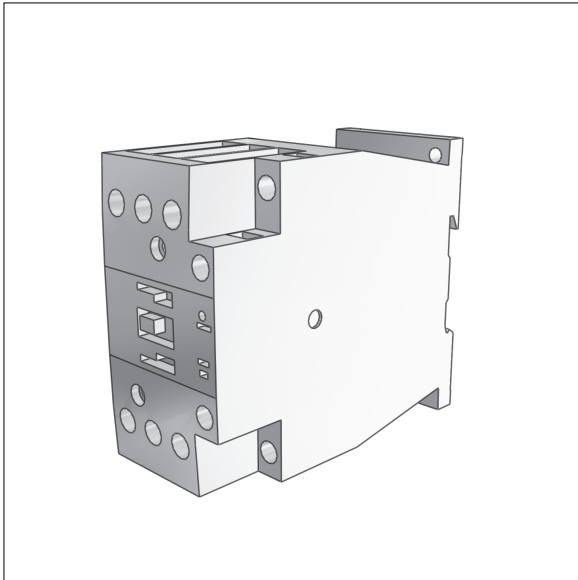
Contactors up to 150 A with electronic actuation

# PDF DATASHEET

© 1992-2013 CADENAS GmbH

Last Modification (geometry): 14 Nov 2013 13:32:15

Datasheet creation date: 27 Feb 2014 05:03:45





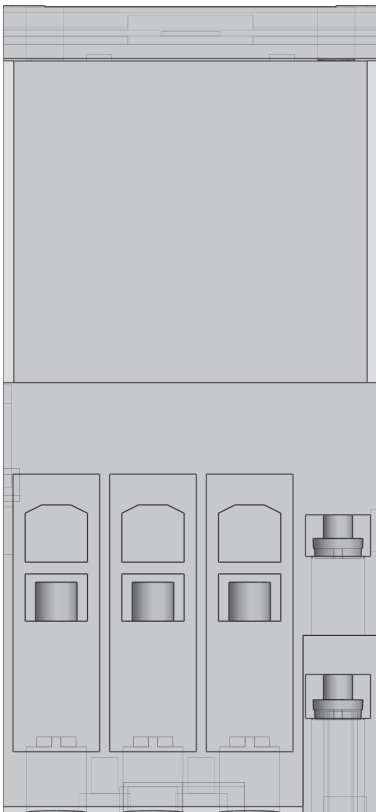
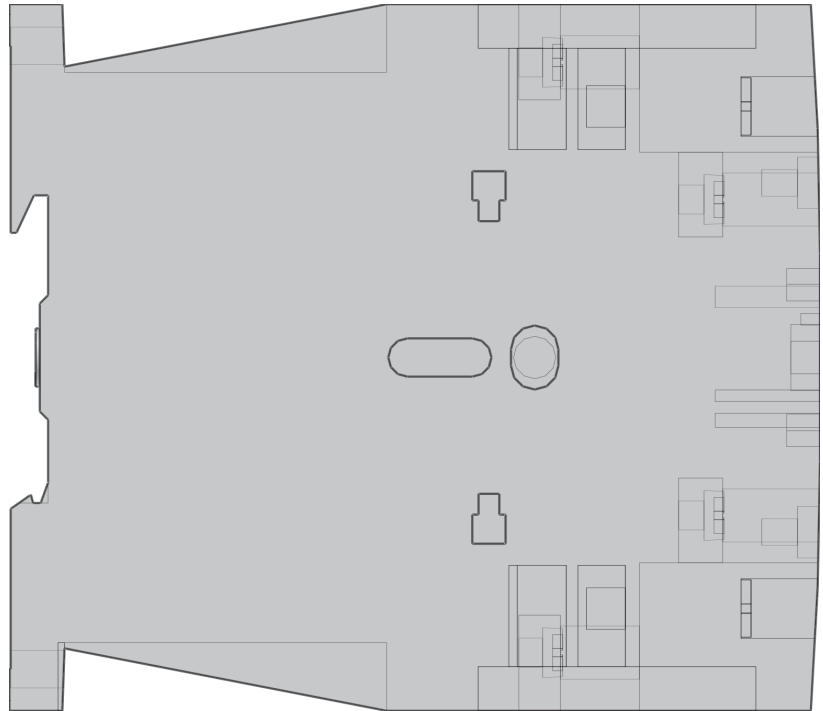
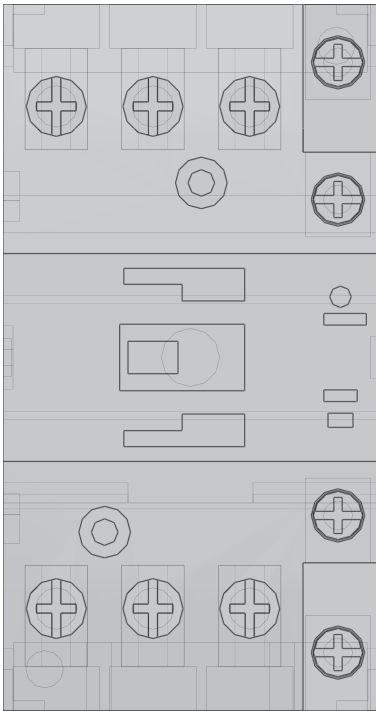
Contactors up to 150 A with electronic actuation

# PDF DATASHEET

© 1992-2013 CADENAS GmbH

Last Modification (geometry): 14 Nov 2013 13:32:15

Datasheet creation date: 27 Feb 2014 05:03:45





Contactors up to 150 A with electronic actuation

## PDF DATASHEET

© 1992-2013 CADENAS GmbH

Last Modification (geometry): 14 Nov 2013 13:32:15

Datasheet creation date: 27 Feb 2014 05:03:45

<b>PRODUKTBILD (Product picture)</b>	2110pic-243.bmp
<b>IDNR (Identification)</b>	104447
<b>MANUFACTURE12 (Manufacturer Type Description)</b>	DILMF25-01(RAC48)
<b>DESCRIPTION13 (Short Description)</b>	SEMI F47 contactor 600V 20HP
<b>DESCRIPTION14 (Long Description)</b>	Contactor with double box terminals for reliable wiring of different cable cross-sections. Front connections enable simple wiring. Multiple voltage range coils with integrated suppressor circuit and minimized heat dissipation. The same dimensions for AC- and DC-operated contactors enables the use of the same accessories. Deliverable accessories: auxiliary contact modules plug-in type and side mounting, mechanical interlock, electronic timer module, overload relay, star-point bridge, paralleling link, IP2X shroud
<b>EAN (EAN)</b>	4015081042647
<b>CNSECLASS512 (__PW_CLASSID__)</b>	27-37-10-03
<b>VERPACKUNGS17 (Packaged weight / kg)</b>	0,531
<b>URL1 (Product data sheet(en))</b>	Product data sheet(en)
<b>URL1_de (Product data sheet(de))</b>	Product data sheet(de)



Contactors up to 150 A with electronic actuation

# PDF DATASHEET

© 1992-2013 CADENAS GmbH

Last Modification (geometry): 14 Nov 2013 13:32:15

Datasheet creation date: 27 Feb 2014 05:03:45

## Stückliste

N°	Description	Amount
1	104447	1

## X-ON Electronics

Largest Supplier of Electrical and Electronic Components

*Click to view similar products for [Eaton](#) manufacturer:*

Other Similar products are found below :

[BK1-S506-2-R](#) [FHN31G1](#) [CH222B](#) [SAMI-2I](#) [SAMI-6I](#) [LPN-RK-25SP](#) [ZE6](#) [ZE9](#) [LPN-RK-15SP](#) [LPN-RK-3SP](#) [SAMI-1I](#) [2499](#) [GMC-500MA](#) [AT-20](#) [BK/SC-45](#) [AGC-1-2](#) [BK/MDA-15](#) [BK/MDA-1](#) [BK/C519-1A](#) [BK/MDL-3-2/10](#) [89096-015](#) [8943K28](#) [8946K153](#) [8961K155](#) [M22-DH-Y](#) [M22-DLH-Y](#) [M22-D-R-GB0/K11](#) [M22-LCH-R](#) [M22-L-R/R](#) [M22-WLK3-B](#) [63ET](#) [6422](#) [6580](#) [CTX20-16-52LP-R](#) [CWL530FI](#) [CXM/CO/GP/R/BB](#) [6HD36](#) [714125](#) [MBO-2](#) [7314K36](#) [7321K2](#) [ETF-200MA](#) [F02A-1-1/2A](#) [F02A-1-1/2AS](#) [F02A-1AS](#) [F02A-3/4A](#) [F03A250V10A](#) [F03A250V12A](#) [MDA-2-8/10-R](#) [MDA-30A](#)