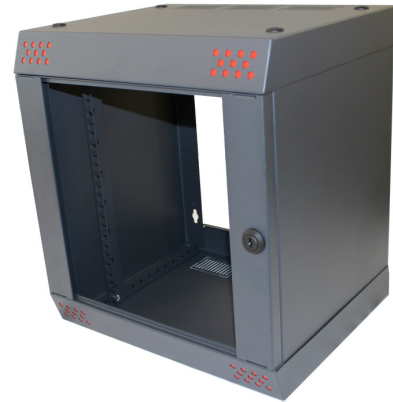


# 19" CABINETS

## CamRack-SX

7U Wall mounted cabinets, designed for SOHO (Small Office, Home Office) installations  
**Assembled in 3 minutes!**



- Delivered flat packed for ease of access to all installations. Also reduces associated logistic costs and offers greater protection during transit.
- Fast and efficient assembly without tools.
- 2x mounting profiles. Variable depth, in 20mm increments. Numbered "U's" optional.
- Fast fixings 1/4 turn locks.
- Front door. Tempered, smoked safety glass.
- No rear panel or door.
- Cable entry options for the top panels.
- Cantilever tray supplied.
- Template for wall mounting included.
- Distributed recommended load capacity: 40 Kg

- Finishes: RAL 7016, Dark grey, anthracite (See below for corner options)

RED	BLUE	ORANGE	WHITE	BLACK	U	WIDTH	DEPTH	HEIGHT
CSX073211	CSX073212	CSX073213	CSX073214	CSX073215	7U	377mm	315mm	420mm

- **Standard corner colours:**



White Red Blue Orange Black

- **Other corner colours available upon request:**



Yellow Green Purple Lilac Grey

UNIVERSAL ENCLOSURES

HAND HELD CASES

HEAVY DUTY ENCLOSURES

DIN RAIL BOXES

INTERFACE SUPPORTS

CONTROL STATIONS

DIECAST & METAL BOXES

DESKTOP & INSTRUMENT CASES

POTTING BOXES

19" ENCLOSURES

19" CABINETS

DEVELOPMENT BOARDS

CUSTOM SIZED ENCLOSURES

CUSTOM SERVICES

## X-ON Electronics

Largest Supplier of Electrical and Electronic Components

*Click to view similar products for [Camden manufacturer](#):*

Other Similar products are found below :

[CCTTR30RD](#) [412689X](#) [CTBP92VE/12R](#) [CTBP9350/12](#) [IND515205-240-T/GRN](#) [IND515205-240-T/RD](#) [CDIC00002](#) [CCTTBES](#)  
[C192SHAND](#) [RX510A](#) [RTM5006/16-PAT](#) [CTB9350/12FL](#) [CTBP9308/6AO](#) [CTBP9358/11](#) [CTBP9208/8](#) [CIME/M/BE2250SS](#)  
[CHH64E1BL](#) [CHD774004](#) [CHHBAT1BK](#) [CFTBN/2](#) [RTM5003/13-NAT](#) [CCB2S1/04](#) [CCM1S1/05](#) [CHDX7-224C](#) [CHDX8-221](#) [CHDX8-222](#) [CHDX8-231C](#) [CHDX810DD](#) [CHDX811DD](#) [CHDX814DD](#) [CTB9300/2A](#) [CTBP92VD/5R](#) [CTBP92VJ/8R](#) [CTSN431/12/M](#)  
[CTSN433/12/M](#) [CUABOX012](#) [CDIC00005](#) [CBRPH-BLK](#) [BIM2004/LUG-GY/GY](#) [RTM5005/15-WH](#) [RTM108-BLK](#) [CNMB/4/KIT](#)  
[CTB5050/5](#) [CTBP9358/10AO](#) [CTBP93VE/9](#) [CHH66C2GY](#) [CIM/9W-DMFS](#) [RTM5006/16-NC-BLK](#) [IND5032405-125-T/AMB](#) [CHTB4/3N](#)