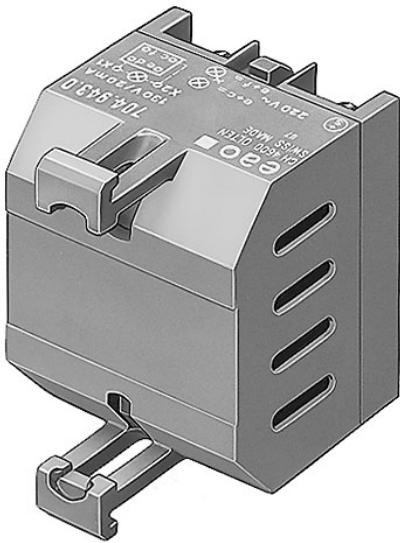


# EAO – Your Expert Partner for Human Machine Interfaces

704.943.2 - Flasher element

## 704.943.2 - Flasher element



*Attention: The preview is based on a sample product. This can differ from your current configuration.*

## Other Attributes

Weight 0.024 kg  
Operating voltage 130 V AC +10 %

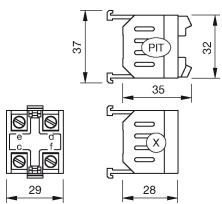
## Connection Method

Terminal Screw

# EAO – Your Expert Partner for Human Machine Interfaces

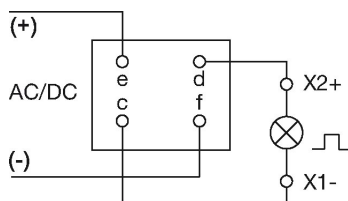
704.943.2 - Flasher element

## Dimensions



X = Screw terminal

## Wiring diagram



## Additional information

Lamp voltage/-current 130 V, 3 mA

## X-ON Electronics

Largest Supplier of Electrical and Electronic Components

*Click to view similar products for [Switch Contact Blocks / Switch Kits](#) category:*

*Click to view products by [EAO](#) manufacturer:*

Other Similar products are found below :

[61-8460.22](#) [61-8480.12](#) [61-8520.12](#) [61-8520.22](#) [61-8610.37](#) [61-8620.17](#) [61-8620.37](#) [61-8655.11](#) [61-8670.37](#) [61-8675.11](#) [61-8720.17](#) [61-8720.37](#) [61-8725.11](#) [M2SA-7010](#) [704.902.3](#) [704-9051](#) [704.905.2](#) [704.907.1](#) [704.915.5](#) [704.918.5](#) [704.942.5](#) [84-8515.8640](#) [A22-11A](#) [A3KJ-7010](#) [A02502](#) [A22RL-FY-M](#) [GLZ304](#) [31-942](#) [31-941](#) [XESP2021](#) [61-8102.02](#) [61-8440.12](#) [61-8480.22](#) [61-8670.17](#) [61-8745.17](#) [61-8775.37](#) [61-9823](#) [704.908.3](#) [704.908.5](#) [704.915.3](#) [704-9101](#) [HA-C2V](#) [A22-02A](#) [A22-12AA](#) [A3PJ-7050-1](#) [602-0000-00](#) [704.907.3](#) [61-8610.17](#) [LSZ3H](#) [A22-12AY](#)