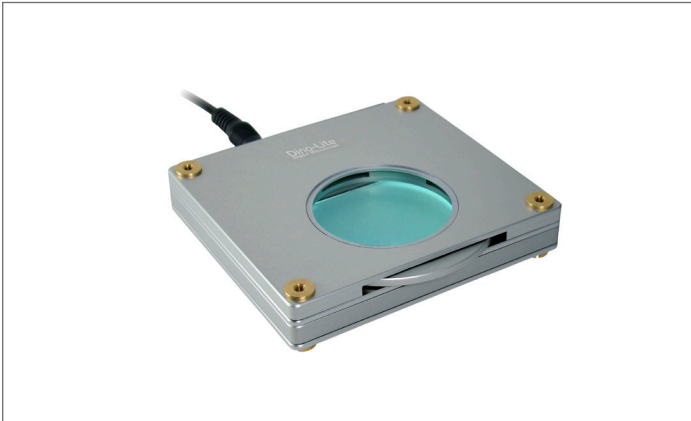


# Dino-Lite BL-ZW1 Backlight



The BL-ZW1 backlight accessory opens up a whole new range of applications. The BL-ZW1 can be powered over USB or the DC adapter. The backlight has a built in, freely rotatable polarizer that works in combination with the AM4113ZT or AD4113ZT polarizer models.

<b>Model</b>	BL-ZW1 Backlight
<b>Dimensions</b>	100 mm x 96.2 mm x 20.5 mm
<b>Housing Material</b>	Aluminum Alloy
<b>Light Intensity</b>	Over 5000 mcd

## **X-ON Electronics**

Largest Supplier of Electrical and Electronic Components

*Click to view similar products for [Dino-Lite manufacturer](#):*

Other Similar products are found below :

[RK-02](#) [AM7013MZT4](#) [SL-ZW1](#) [BL-ZW1](#) [RK-10A](#) [AM4515ZT](#) [AM7025X](#) [AM7515MT8A](#) [AM7515MZT](#) [AM4113ZT](#) [MS15X](#)  
[AM7013MZT](#) [AM4113T](#) [MS33W](#) [AM2111](#)