

DIECAST AND METAL BOXES

86 Series Aluminium Audio Cases

Stylish aluminium Heat-sink cases.

- Heat-sink is incorporated into the side plate.
- Audio style aluminium enclosures.
- Available in 12 sizes in silver.
- Easily customised and light weight.

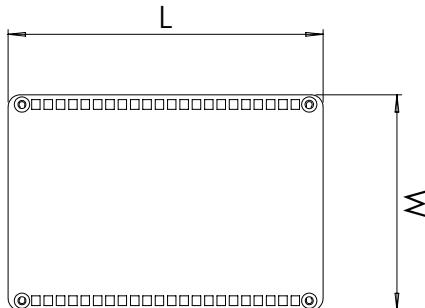
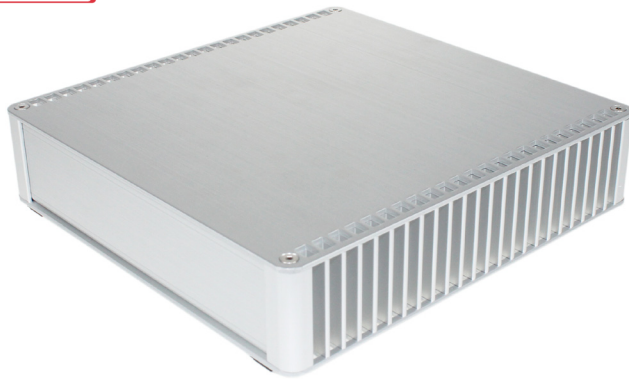
SPECIFICATION

Materials	Lid & body- Aluminium (Anodised)
Standard colours	Silver
Standard unit includes	Lid, base, rubber feet and screws

SILVER	LENGTH	WIDTH	HEIGHT
CDM8601SL	130mm	89mm	20mm
CDM8602SL	130mm	89mm	40mm
CDM8603SL	130mm	130mm	30mm
CDM8604SL	130mm	130mm	50mm
CDM8605SL	130mm	180mm	40mm
CDM8606SL	130mm	180mm	60mm
CDM8607SL	180mm	128mm	30mm
CDM8608SL	180mm	128mm	50mm
CDM8609SL	180mm	174mm	40mm
CDM8610SL	180mm	174mm	60mm
CDM8611SL	180mm	228mm	50mm
CDM8612SL	180mm	228mm	70mm

* Black available on request

TAKACHI



UNIVERSAL ENCLOSURES

HAND HELD CASES

HEAVY DUTY ENCLOSURES

DIN RAIL BOXES

INTERFACE SUPPORTS

CONTROL STATIONS

DIECAST & METAL BOXES

DESKTOP & INSTRUMENT CASES

POTTING BOXES

19" ENCLOSURES

19" CABINETS

DEVELOPMENT BOARDS

CUSTOM SIZED ENCLOSURES

CUSTOM SERVICES

X-ON Electronics

Largest Supplier of Electrical and Electronic Components

Click to view similar products for [Takachi manufacturer](#):

Other Similar products are found below :

[TWF5-3-9W](#) [PF10-4-7W](#) [TMC-6PG](#) [LCSC115-BL](#) [AWN16-9-18EBB](#) [TWSC13-7N](#) [TWF13-3-13W](#) [CS75N-W](#) [PF20-6-13W](#) [WH145-25-M2-BL](#) [WH145-25-N-BN](#) [CSPB-115](#) [LCSC115H-N](#) [PF10-2-10W](#) [PF13-3-19W](#) [PF18-4-12D](#) [PF18-5-18W](#) [PFF18-4-12W](#) [AWC11-15](#) [AWSP16-9B](#) [LC115H-M2-W](#) [LC115-N-W](#) [PF10-6-15D](#) [PF24-4-24W](#) [PF24-6-17D](#) [PF24-6-24W](#) [WH145-25-N-WN](#) [LC135H-M2-W](#) [LC115H-N-D](#) [HIT23-7-18SS](#) [CSPB-90](#) [LC145-M2-D](#) [LC145S-F6-D](#) [LC145S-N-W](#) [LCSC145H-Y](#) [LCSC145S-B](#) [PFF10-4-7W](#) [WCPB-72](#) [WP8-8-2G](#) [TWN8-4-8W](#) [TWF4-2-5D](#) [CSSC90-OP-C](#) [PF20-4-20W](#) [TWF7-2-11D](#) [TWN11-5-22W](#) [WH145-20-N-BR](#) [LCSC165H-G](#) [WP6-8-2G](#) [WH145-33-N-BN](#) [PF20-6-20W](#)