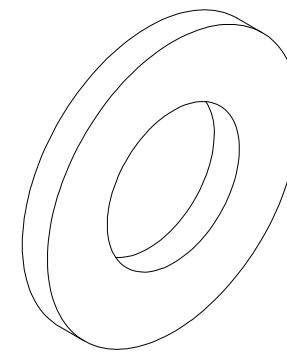
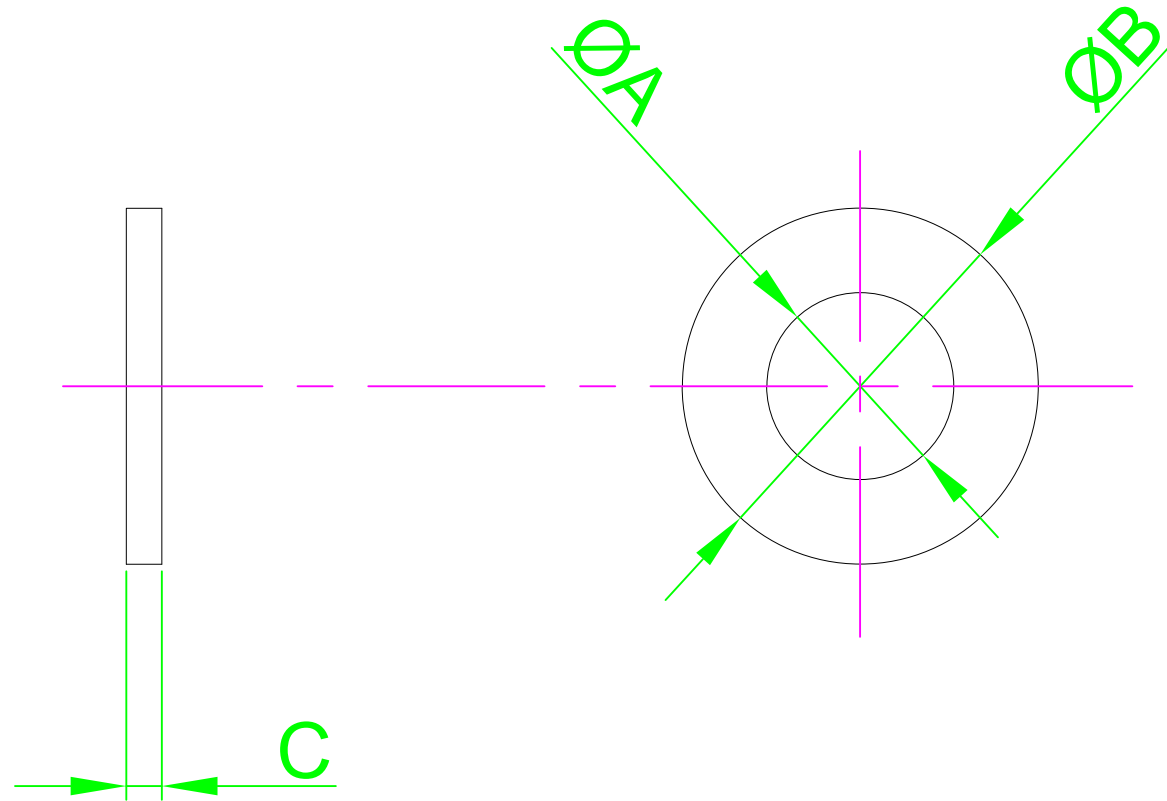


DO NOT SCALE DRAWING

REVISION

A INITIAL DRAWING 25.01.18



Part Number	ØA	ØB	C
M2 - FANYWA - BG10	2.2 - 2.34	4.7 - 5.0	0.25 - 0.35
M2.5 - FANYWA - BG10	2.7 - 2.84	5.7 - 6.0	0.45 - 0.55
M3 - FANYWA - BG10	3.2 - 3.38	6.64 - 7.0	0.45 - 0.55
M4 - FANYWA - BG10	4.3 - 4.48	8.64 - 9.0	0.7 - 0.9
M5 - FANYWA - BG10	5.3 - 5.48	9.64 - 10.0	0.9 - 1.1
M6 - FANYWA - BG10	6.4 - 6.62	11.57 - 12.0	1.4 - 1.8

NOTES:



UNLESS OTHERWISE SPECIFIED:  
DIMENSIONS ARE IN MM (MILLIMETERS).  
SURFACE FINISH:  
TOLERANCES: DIN 125

MATERIAL:  
NYLON

TITLE:  
Plain Nylon Washer

	NAME	DATE
DRAWN	Darryl Wilson	25.01.18
CHK'D		
APPVD		

HEAT TREATMENT:  
N/A

DESIGN RIGHT. TR FASTENINGS LTD, 2003  
UNDER NO CIRCUMSTANCES MUST THIS  
DRAWING BE COPIED OR DISCLOSED  
WITHOUT FIRST OBTAINING WRITTEN  
AUTHORITY.

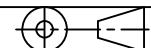
CUSTOMER PART NUMBER:  
N/A

FINISH:  
NATURAL

DRAWING NUMBER:  
TR32FANYWA-BG10

A4

PROJECTION



## X-ON Electronics

Largest Supplier of Electrical and Electronic Components

*Click to view similar products for TR Fastenings manufacturer:*

Other Similar products are found below :

[H0.250 M7STPB SF HEX 5.0](#) [TRRLCBSR-6-01](#) [3.516KRST30TC1D](#) [N61.000 PRA2ABS100-](#) [M870 HHA2SCS50-](#) [M8- FLST-Z100-](#)  
[3.012PRST30TC1D](#) [M6- HFBR-N100-](#) [M670 SOHTCSS100-](#) [M612 KHHTMCZ50-](#) [M6100 SOHTCSS100-](#) [M616 HHHTSCZ100-](#) [M612](#)  
[SOA2CSS50-](#) [M540 KSSTMCZ100-](#) [M530 HHHTSCZ100-](#) [M525 HHA2SCS100-](#) [M520 PSSTMCZ100-](#) [M510 KHHTMCZ50-](#) [M420](#)  
[PSSTMCZ100-](#) [M48 BHHTMCZ100-](#) [M450 PSSTMCZ100-](#) [M440 SOHTCSS100-](#) [M430 SOHTCSZ100-](#) [M420 SOHTCSS100-](#) [M3-](#)  
[UHBRFLSF](#) [M1050 HHHTSCZ50-](#) [M1040 SOHTCSS100-](#) [M1016 HHHTSCZ50-](#) [4.030KRST30TC1D](#) [4.016FLST30TC1D](#)  
[5.010PRST30TC1D](#) [4.016PRST30TC1D](#) [4.012KRST30TC1D](#) [3.512FLST30TC1D](#) [NYPL S100](#) [M4 25 M4A2MC S50 BUT T20](#) [M5 16](#)  
[M4A2MC S50 CSK T25](#) [H0.250 25 M4STPB SF T25](#) [W/M8MEDIUM/FLG/OE/ST/KG](#) [3.025PRST30TC1D](#) [FAHSNGFFM3-30-6](#) [N81.250](#)  
[PRA2ABS100-](#) [TRFAKIT0009](#) [M6- DNA2-S50-](#) [M660 SOHTCSS100-](#) [M645 SOA2CSS50-](#) [M616 SOHTCSZ100-](#) [M612 SOHTCSS100-](#)  
[M612 HHHTSCZ100-](#) [M660 SOHTCSZ100-](#)