



# HER101/UF4001 THRU HER108/UF4007

**1.0 AMP. HIGH EFFICIENT RECTIFIERS**

**Voltage Range  
50 to 1000 VOLTS  
Current  
1.0 Amperes**

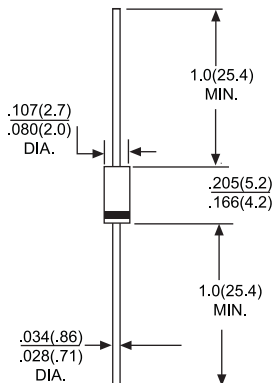
**Features**

- Low forward voltage drop
- High current capability
- High reliability
- High surge current capability

**Mechanical Data**

- Cases: Molded plastic DO-41
- Epoxy: UL 94V-O rate flame retardant
- Lead: Axial leads, solderable per MIL-STD-202, Method 208 guaranteed
- Polarity: Color band denotes cathode end
- High temperature soldering guaranteed: 250°C/10 seconds/.375", (9.5mm) lead lengths at 5 lbs., (2.3kg) tension
- Weight: 0.34 gram

**DO-41**



Dimensions in inches and (millimeters)

**MAXIMUM RATINGS AND ELECTRICAL CHARACTERISTICS**

Rating at 25°C ambient temperature unless otherwise specified.  
Single phase, half wave, 60Hz, resistive or inductive load.  
For capacitive load, derate current by 20%

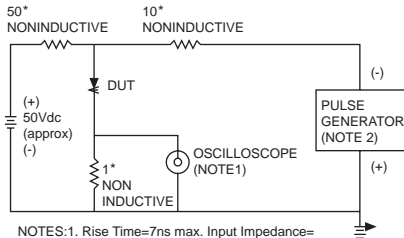
Type Number		HER101 UF4001	HER102 UF4002	HER103 UF4003	HER104	HER105 UF4004	HER106 UF4005	HER107 UF4006	HER108 UF4007	UNITS	
Maximum Repetitive Peak Reverse Voltage	V <sub>RRM</sub>	50	100	200	300	400	600	800	1000	V	
Maximum RMS Voltage	V <sub>RMS</sub>	35	70	140	210	280	420	560	700	V	
Maximum DC Blocking Voltage	V <sub>DC</sub>	50	100	200	300	400	600	800	1000	V	
Maximum Average Forward Rectified Current .375"(9.5mm) Lead Length @T <sub>A</sub> = 55 °C	I <sub>F(AV)</sub>	1.0									A
Peak Forward Surge Current, 8.3 ms Single Half Sine-wave Superimposed on Rated Load (JEDEC method)	I <sub>FSM</sub>	30									A
Maximum Instantaneous Forward Voltage @1.0A	V <sub>F</sub>	1.0			1.3		1.7			V	
Maximun DC Reverse Current @ T <sub>A</sub> = 25°C at Rated DC Blocking Voltage @ T <sub>A</sub> = 100 °C	I <sub>R</sub>	5.0 100									uA uA
Maximum Reverse Recovery Time (Note 1)	T <sub>RR</sub>	50			75						nS
Typical Junction Capacitance (Note 2)	C <sub>J</sub>	20			15						pF
Operating Temperature Range	T <sub>J</sub>	-55 to+125									°C
Storage Temperature Range	T <sub>STG</sub>	-55 to+150									°C

NOTES: 1. Reverse Recovery Test Conditions: I<sub>F</sub>=0.5A,I<sub>R</sub>=1.0A,I<sub>RR</sub>=0.25A  
2.Measured at 1 MHz and Applied Reverse Voltage of 4.0 V D.C.

# RATING AND CHARACTERISTIC CURVES HER101/UF4001 THRU HER108/UF4007



FIG.1- REVERSE RECOVER TIME CHARACTERISTIC AND TEST CIRCUIT DIAGRAM



NOTES:1. Rise Time=7ns max. Input Impedance=1 megohm 22pf  
2. Rise Time=10ns max. Source Impedance=50 ohms

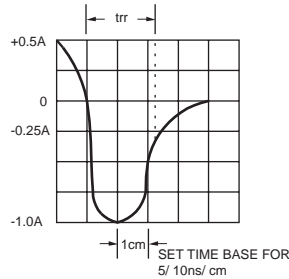


FIG.2-MAXIMUM AVERAGE FORWARD CURRENT DERATING

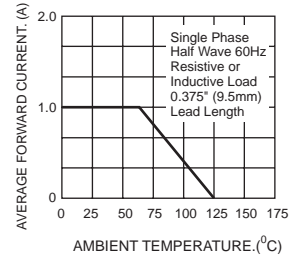


FIG.3-TYPICAL REVERSE CHARACTERISTICS

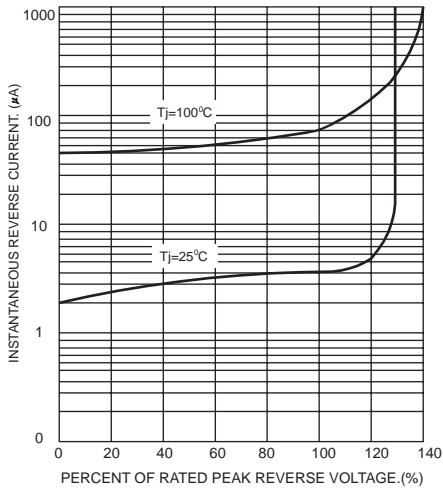


FIG.4-TYPICAL FORWARD CHARACTERISTICS

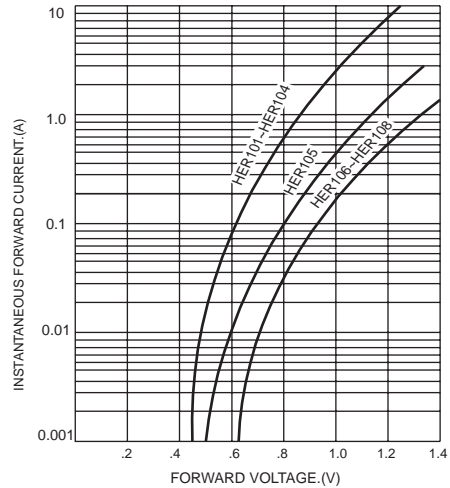


FIG.5-MAXIMUM NON-REPETITIVE SURGE CURRENT

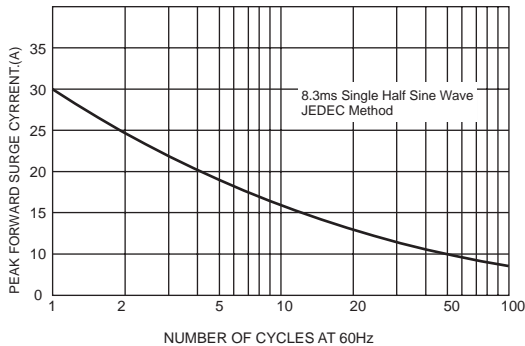
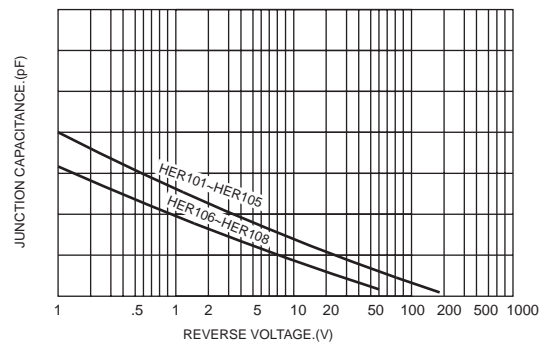


FIG.6-TYPICAL JUNCTION CHARACTERISTICS



## X-ON Electronics

Largest Supplier of Electrical and Electronic Components

*Click to view similar products for [Diodes - General Purpose, Power, Switching category](#):*

*Click to view products by [Yangjie manufacturer](#):*

Other Similar products are found below :

[MCL4151-TR3](#) [MMBD3004S-13-F](#) [RD0306T-H](#) [RGP30G-E373](#) [BAQ333-TR](#) [BAQ335-TR](#) [BAQ33-GS18](#) [BAS1602VH6327XT](#) [BAV17-TR](#) [BAV19-TR](#) [BAV301-TR](#) [BAW27-TAP](#) [NSVBAV23CLT1G](#) [NTE525](#) [1SS181-TP](#) [1SS184-TP](#) [1SS193,LF](#) [1SS193-TP](#) [1SS400CST2RA](#) [SBAV99LT3G](#) [SDAA13](#) [LL4448-GS18](#) [SHN2D02FUTW1T1G](#) [LS4150GS18](#) [LS4151GS08](#) [SMMBD7000LT3G](#) [1N4449](#) [1N4934-E3/73](#) [APT100DL60HJ](#) [RFUH20TB3S](#) [RGP30G-E354](#) [RGP30M-E3/73](#) [D291S45T](#) [MCL4151-TR](#) [BAS 16-02L E6327](#) [BAS 16-02V H6327](#) [BAS 21U E6327](#) [BAS 28 E6327](#) [BAS33-TAP](#) [BAS 70-02V H6327](#) [BAV300-TR](#) [BAV303-TR3](#) [BAW27-TR](#) [BAW56DWQ-7-F](#) [BAW56M3T5G](#) [BAW75-TAP](#) [BAW76-TR](#) [MM230L-CAA](#) [MMSD914-TP](#) [IDW40E65D1](#)