

## US-313 - USB 2 Port RS422/485 1MBaud

### CONNECT, CONFIGURE, CONTROL YOUR SERIAL DEVICES

#### Features



- 2 port RS422/485
- 128 Byte Tx and 384 Byte Rx FIFOs
- Up to 921,600 Baud
- DB9 Connector - 9 Pin Male connector (9 Pin Male)
- IP-30 rated enclosure
- Drivers for all popular operating systems
- LED status indication
- Supplied with USB cable
- Supplied with rubber feet for office environment
- Optional DIN rail mounting kits
- Lifetime Warranty\* and Lifetime Support

\* Registration required

#### Description

USB to Serial adapter providing two RS422/485 serial ports. Data transfer rates up to 921,600 baud rates and the 128 byte deep transmit and 384 byte receive FIFOs, coupled with 1Mbit line drivers deliver uncompromising performance on your laptop/PC. Drivers for Windows 32 bit and 64 bit Operating Systems including Windows XP, Server 2003, Vista, Server 2008, Windows 7 and Windows 8 with additional drivers for both Mac OS X and Linux.

USB to serial is the quick low cost way to connect your computer to a serial comms enabled device. Boost software gives industry leading functionality and compatibility.

These products do away with traditional issues with USB technology so you can buy with confidence!

With Brainboxes industry renowned Lifetime Warranty and Lifetime Support!

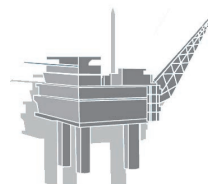
#### Example Application



CNC Machine



Point of Sale



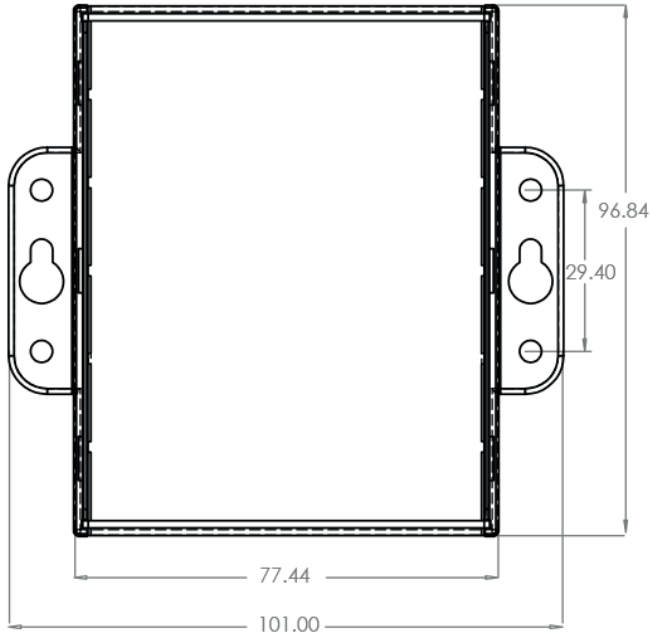
Oil Rig



Laboratory

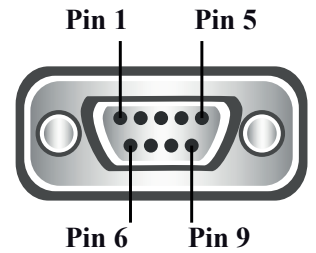
# US-313 - USB 2 Port RS422/485 1MBaud

## Box Information



<b>Pin 1</b>	TXD-
<b>Pin 2</b>	TXD+
<b>Pin 3</b>	RTS-
<b>Pin 4</b>	RTS+
<b>Pin 5</b>	GND
<b>Pin 6</b>	RXD-
<b>Pin 7</b>	RXD+
<b>Pin 8</b>	CTS
<b>Pin 9</b>	CTS+

## RS422/485 Pinout (9 Pin)



## Device Dimensions

Size - 100x102x27 mm, 3.9x4.0x1.1 inches

## LED Information

<b>Status LED</b>	Green	Power On
<b>Serial Port LEDs</b>	Green light on	Data TX
	Green light on	Data RX

## Port

<b>Ports</b>	2 x RS422/485
<b>Connector</b>	DB9 Connector - 9 Pin Male connector (9 Pin Male)
<b>FIFO Size</b>	384 RX FIFO + 128 TX FIFO
<b>Operating Distance</b>	RS422/485 Standard 4000 ft : 1200 metres
<b>Cable</b>	USB cable Type A to B 1 metre 3ft

# US-313 - USB 2 Port RS422/485 1MBaud

## Port Settings

Baud Rate	921,600
Data Bits	7 or 8
Parity	Odd, Even, None, Mark or Space
Stop Bits	1 or 2
Flow Control	RTS/CTS, DSR/DTR, XON/XOFF
Tx/Rx Modes	Full Duplex, Half Duplex Autogating

## Product Information

Power Consumption	180mA @ 5V
Product Weight	0.115 kg, 4.06 ounces

## Interface

OS Compatibility	Microsoft Windows 8 32 bit 64 bit Editions Microsoft Windows 7 32 bit 64 bit Editions Windows Server 2008 32 bit 64 bit Editions Windows Vista 32 bit 64 bit Editions
BUS	USB 2.0



## Approvals

Industry Approvals	Microsoft Certified Gold Partner WEEE RoHS
Microsoft Approvals	AEO C-TPAT
Microsoft Signed Drivers	Windows 8 32 bit 64 bit Editions Windows 7 32 bit 64 bit Editions Windows Vista 32 bit 64 bit editions Windows XP 32 bit 64 bit editions



## Packing Information

Packaging	Installation CD including manual, Microsoft signed drivers & utilities
Device	USB 2 Port RS422/485 1MBaud
Optional Extras	DIN-Rail Mounting Kit - MK-048 Power through USB, no extra power supplied required Power through USB, no extra power supplied required
Packaged Weight	0.280 kg, 9.88 ounces
Packaged Dims	160x135x45 mm, 6.3x5.3x1.8 inches

## Product Support

Warranty	Lifetime - online registration required
Support	Lifetime Web, Email and Phone Support from fully qualified, friendly staff who work in and alongside the Product Development Team



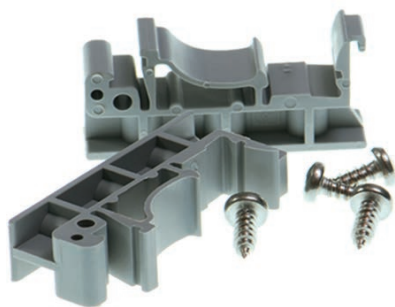
# US-313 - USB 2 Port RS422/485 1MBaud

## Additional Information

<b>OEM option</b>	Available for bulk buy OEM
<b>Made In</b>	Manufactured in the UK by Brainboxes Winner 2005 European Electronics Industry Awards 'Manufacturer of the Year'
<b>Customisable</b>	Brainboxes operate a 'Perfect Fit Custom Design' policy for volume users. More info: <a href="mailto:sales@brainboxes.com">sales@brainboxes.com</a>

## Optional Extras

### ORDER CODE - DIN-Rail Mounting Kit - MK-048



### ORDER CODE - Additional Power through USB, no extra power supplied required

## X-ON Electronics

Largest Supplier of Electrical and Electronic Components

*Click to view similar products for [Controllers](#) category:*

*Click to view products by [Brainboxes](#) manufacturer:*

Other Similar products are found below :

[CS1WCN223](#) [CS1WCN713](#) [CS1WKS001E](#) [61F-11NH](#) [61FGPN8DAC120](#) [61F-GP-NT AC110](#) [61F-GPN-V50-AC110](#) [70177-1011](#) [F03-03](#)  
[HAS B](#) [F03-03 HAS C](#) [F03-31](#) [81513201](#) [81513535](#) [81550401](#) [FT1A-C12RA-W](#) [88981106](#) [H2CAC24A](#) [R88A-CAGA005S](#) [R88A-](#)  
[CRGB003CR-E](#) [R88ARR080100S](#) [R88A-TK01K](#) [DCN1-1](#) [DTB4896VRE](#) [DTB9696CVE](#) [DTB9696LVE](#) [MR-50LF+](#) [E53-AZ01](#) [E53E8C](#)  
[E5CWLQ1TCAC100240](#) [B300LKL21](#) [NE1ASCPU02EIPVER11](#) [NE1SCPU01](#) [NE1SDRM21U](#) [NSCXDC1V3](#) [NSH5-232CW-3M](#)  
[NT20SST122BV1](#) [NV3Q-SW41](#) [NV4W-ATT01](#) [NV-CN001](#) [OAS-160-N](#) [K31S6](#) [K33-L1B](#) [K3TX-AD31A](#) [L595020](#) [SRS2-1](#) [G32X-V2K](#)  
[26546803](#) [26546805](#) [26546831](#) [CJ1W-OD204](#)