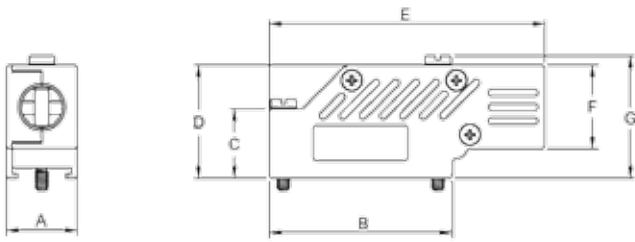
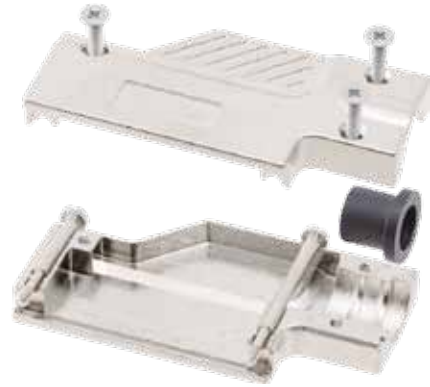


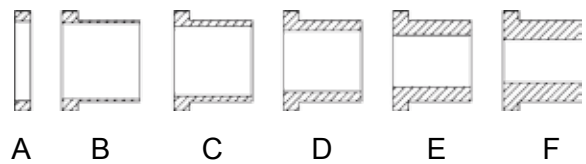
TECHNICAL SPECIFICATIONS

- Material:** Zinc, Nickel Plated
- Operating Temperature:** -25°C to +90°C
- Cable Entry:** Side Entry
- Jackscrews:** UNC 4-40
- Cable O.D.:** Up to 18,4mm
- Type of grommets:** Compression Inserts



Size	A	B	C	D	E	F	G
9	15,0	30,8	15,0	24,4	50,8	18,0	26,2
15	15,2	39,4	15,0	24,4	59,3	18,0	26,4
25	15,8	53,3	23,1	34,5	72,4	24,3	35,0
37	15,8	69,9	23,1	40,9	89,7	30,7	42,9
50	18,0	67,1	-	40,9	86,9	30,7	42,9

Compression Inserts - Inner Diameters:



Size	A	B	C	D	E	F
9/15	8,10	8,00	7,25	6,50	5,30	-
25	11,40	10,40	9,40	7,60	5,80	-
37/50	16,50	15,75	14,50	12,70	10,80	8,90

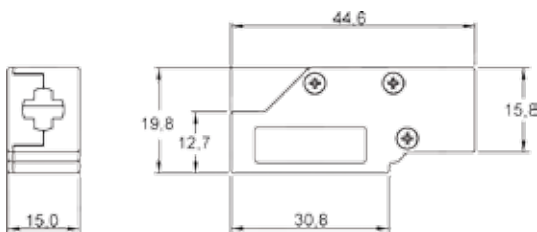
Features:

- Available in sizes 9, 15, 25 and 37-way
Size 50 on request
- Suitable for any common Sub-D connector
- Re-Openable
- Compression Inserts in Thermoplastic Compound

Order codes:

9-way	1060-0135-01	MHDCMR9-ULP
15-way	1060-0135-02	MHDCMR15-ULP
25-way	1060-0135-03	MHDCMR25-ULP
37-way	1060-0135-04	MHDCMR37-ULP
50-way	1060-0135-05	MHDCMR50-ULP

Slide Lock Version:



- Material as above ULP-version
- Available in size 9 only

Order codes:

9-way	1060-0135-11	MHDCMR09-SL
-------	--------------	-------------

X-ON Electronics

Largest Supplier of Electrical and Electronic Components

Click to view similar products for [MH Connectors](#) manufacturer:

Other Similar products are found below :

[MHDCMR37-ULP](#) [MHDRB-MC](#) [MHCCOV-25MEL](#) [MHDPPK25-LG-K](#) [MHCCOV-25SC-BK](#) [BNCL1.0MRG58](#) [MHDTZK15-RA-K](#)
[DCMR09-RA-K](#) [RJ45SRB-RET-P](#) [MHTRI-M-37-K](#) [T-JS](#) [RJ45SRB-RET-O](#) [BNCL2.0MRG58](#) [DSSKP25L-DB25S-K](#) [MHD45ZK15-BK-K](#)
[MHDC09S](#) [MHTRI-P-15-K](#) [MHTRI-M-9-K](#) [RG59/62SRB-B](#) [MHCCOV-15SC-LG](#) [MHRJ116P4CR](#) [MHCCOV-25SC-MP](#) [DSSKM15L-](#)
[DB15S-K](#) [DSSKM25L-DB25S-K](#) [RJ45SRB-RET-Y](#) [MHDPPK-M-37-K](#) [T-JS-M2.5](#) [MHCCOV-25SC-LG](#) [MHRJ45SRI-BK](#) [MHDTZI-37-K](#)
[MHDA25-PMJ6-K](#) [DA9-SMJ8-R-K](#) [CCOV-37SC-BLACK](#) [MHDTZK25-RA-HI-K](#) [MHDA25-SMJ8-K](#) [MHCCOV-9SC-MP](#) [DJF-14](#)
[MHDM37SP](#) [DA9-PMJ8-B-K](#) [DA25-PMJ8-M-K-RC](#) [MHD45ZK9-DM9P-K](#) [GA0909FFLGK-RC](#) [MHDD9F-T-B-S-RBM](#) [MHCCOV-](#)
[25SCL-LG](#) [T-JS-M3.0](#) [MHD45ZK25-K](#) [MHDTPPK37-K](#) [MHCCOV-25ME](#) [C88E210000](#) [MHDVSL15-K](#)