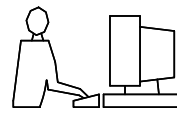
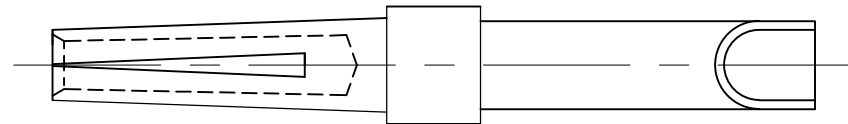
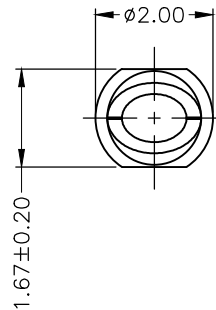
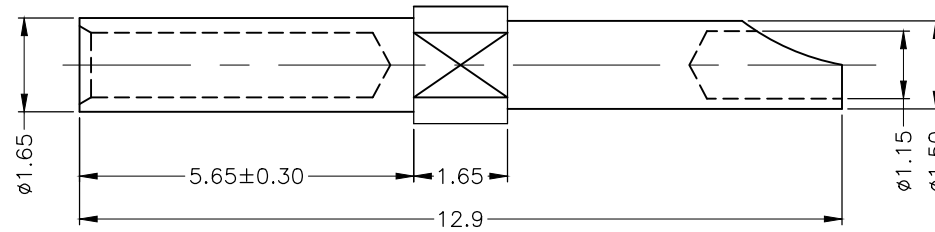


THIS IS A C.A.D. GENERATED DRAWING  
DO NOT MAKE MANUAL REVISIONS TO MASTER.



\* UNLESS OTHERWISE SPECIFIED TOLERANCES  
ON DECIMAL IS: X.X ±0.3  
                  X.XX ±0.10  
UNIT: MM



NOTES:

- (1) MATERIAL: BRASS
- (2) PLATING: GOLD FLASH OVER NICKEL

THESE DRAWINGS AND SPECIFICATIONS ARE THE PROPERTY OF MH CONNECTORS LTD. AND SHALL NOT BE REPRODUCED, COPIED OR USED AS THE BASIS FOR THE MANUFACTURE OR SALE OF APPARATUS WITHOUT WRITTEN PERMISSION.

DRAWN Haley	DATE 08-06-14
----------------	------------------

APPROVED	DATE
----------	------

SCALE	SHEET OF 1 OF 1	REV: 1.0
-------	--------------------	-------------

DRAWING No DM-STF
----------------------



THIS SERIES FULLY CONFORMS TO THE EUROPEAN UNION DIRECTIVES 2002/95/EC AND 2002/96/EC FOR RoHS COMPLIANCY.



**MH CONNECTORS LTD.**

## X-ON Electronics

Largest Supplier of Electrical and Electronic Components

*Click to view similar products for [MH Connectors](#) manufacturer:*

Other Similar products are found below :

[MHDCMR37-ULP](#) [MHDRB-MC](#) [MHCCOV-25MEL](#) [MHDPPK25-LG-K](#) [MHCCOV-25SC-BK](#) [BNCL1.0MRG58](#) [MHDTZK15-RA-K](#)  
[DCMR09-RA-K](#) [RJ45SRB-RET-P](#) [MHTRI-M-37-K](#) [T-JS](#) [RJ45SRB-RET-O](#) [BNCL2.0MRG58](#) [DSSKP25L-DB25S-K](#) [MHD45ZK15-BK-K](#)  
[MHDC09S](#) [MHTRI-P-15-K](#) [MHTRI-M-9-K](#) [RG59/62SRB-B](#) [MHCCOV-15SC-LG](#) [MHRJ116P4CR](#) [MHCCOV-25SC-MP](#) [DSSKM15L-](#)  
[DB15S-K](#) [DSSKM25L-DB25S-K](#) [RJ45SRB-RET-Y](#) [MHDPPK-M-37-K](#) [T-JS-M2.5](#) [MHCCOV-25SC-LG](#) [MHRJ45SRI-BK](#) [MHDTZI-37-K](#)  
[MHDA25-PMJ6-K](#) [DA9-SMJ8-R-K](#) [CCOV-37SC-BLACK](#) [MHDTZK25-RA-HI-K](#) [MHDA25-SMJ8-K](#) [MHCCOV-9SC-MP](#) [DJF-14](#)  
[MHDM37SP](#) [DA9-PMJ8-B-K](#) [DA25-PMJ8-M-K-RC](#) [MHD45ZK9-DM9P-K](#) [GA0909FFLGK-RC](#) [MHDD9F-T-B-S-RBM](#) [MHCCOV-](#)  
[25SCL-LG](#) [T-JS-M3.0](#) [MHD45ZK25-K](#) [MHDTPPK37-K](#) [MHCCOV-25ME](#) [C88E210000](#) [MHDVSL15-K](#)