



fitted with

work equipment

- connected load**
- power consumption**
- system of protection**
- class of protection**
- usage**
- luminaire body**
- lamp cover**
- weight (net)**
- mains lead**

- fastening**
- special features**

4 x regular fluorescent lamp T26 58W/950 G13
 light colour daylight white
 Energy efficiency category B
 electronic ballast
 Energy efficiency index (EEI): A2
 220-240V; 50/60Hz
 approx. 232 W
 IP 20
 I
 switch
 sheet metal, painted, grey
 acrylic clear
 approx. 30.5 kg
 approx. 5.0 m; connector
 3-polig
 chain
 timer

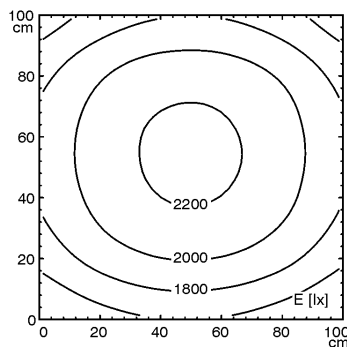


3-polig

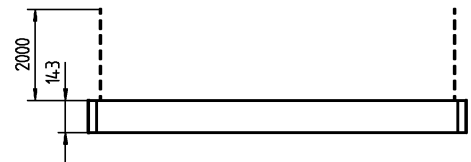
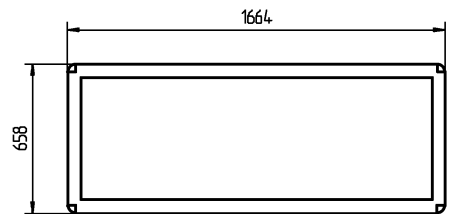
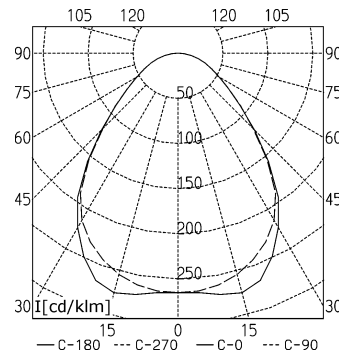
illuminance

Comment: d=100cm

Em: 1941 lx
 Emax: 2248 lx
 Emin: 1434 lx



luminous intensity



X-ON Electronics

Largest Supplier of Electrical and Electronic Components

Click to view similar products for [LED Lighting Fixtures](#) category:

Click to view products by [Waldmann](#) manufacturer:

Other Similar products are found below :

[XVEC21P](#) [XVEC2B7](#) [113163000-00662717](#) [113472000-00691461](#) [LD6A-3DQB-RYG](#) [LD6A-3DZQB-RYG](#) [LF1B-NA3P-2THWW2-3M](#) [LF1B-NC3P-2THWW2-3M](#) [LF1B-ND3P-2THWW2-3M](#) [E35600](#) [NB-RLAMP01-LED](#) [FLK7LED](#) [LD6A-3WQB-RYG](#) [XVC4B3K](#) [XVBC4M7](#) [2702478](#) [2702479](#) [2702482](#) [2702935](#) [2702934](#) [ZWF-638-24CW](#) [ZAF-486-24CW](#) [BC5000-N-S](#) [BP3200-C-S-24](#) [BP3200-C-F-36](#) [BP3200-C-F-12](#) [BC5000-C-S](#) [2702933](#) [2403122](#) [2403121](#) [2402991](#) [113261000-00641180](#) [113259000-00641174](#) [190007019-00014904](#) [226108019-00610754](#) [4823](#) [4824](#) [4866](#) [4868](#) [11212573001-00514271](#) [113021000-00564565](#) [113473000-00704968](#) [113471000-00704981](#) [NB-RLAMP01](#) [E35500](#) [408001403-00671626](#) [LD6A-3WZQB-RYG](#) [LF1B-NA4P-2THWW2-3M](#) [LF1B-NB3P-2THWW2-3M](#) [LF1D-C2F-2W-330](#)