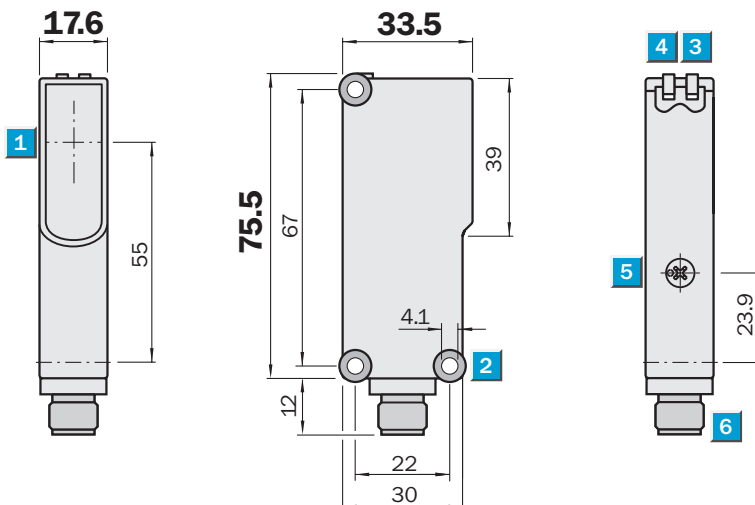

**Scanning range**  
 7 m  
 Photoelectric reflex switches

- Autocollimation optics; reliable target detection
- Insensitive to external light sources (HF lamps)
- Operation reliability with equipment facing each other
- Permissible ambient operating temperature -40 °C ... +60 °C
- Test input for system diagnosis (optional)

**Dimensional drawing**

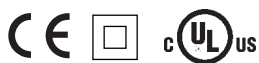
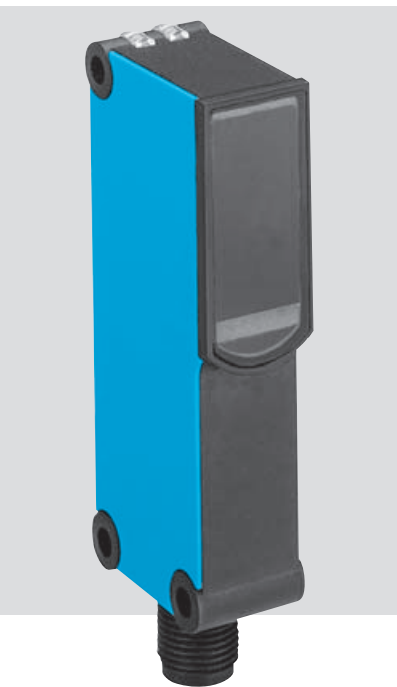


**Adjustments possible**

All types

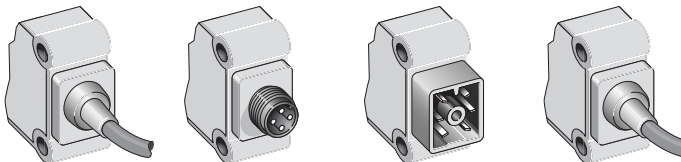


- 1** Middle of optical axis
- 2** Mounting holes Ø 4.1 mm
- 3** Status indicator LED, yellow, status of received light beam
- 4** Status indicator LED, green; power on
- 5** Sensitivity control; Poti 270°
- 6** Plug M12, 4-pin or cable 2 m or cubic plug 6 pin

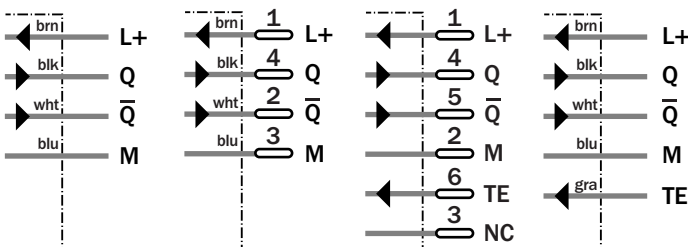


**Connection types**

WL18-3P130	WL18-3P430	WL18-3P630	WL18-3P730
WL18-3N130	WL18-3N430	WL18-3N630	WL18-3N730



4 x 0.25 mm <sup>2</sup>	4-pin, M12	6-pin	5 x 0.25 mm <sup>2</sup>
--------------------------	------------	-------	--------------------------



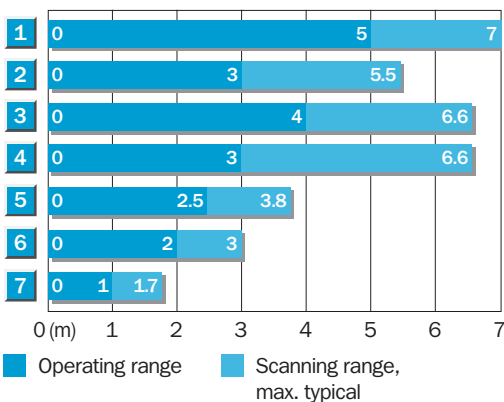
**Accessories**

Connectors
Reflectors
Mounting systems

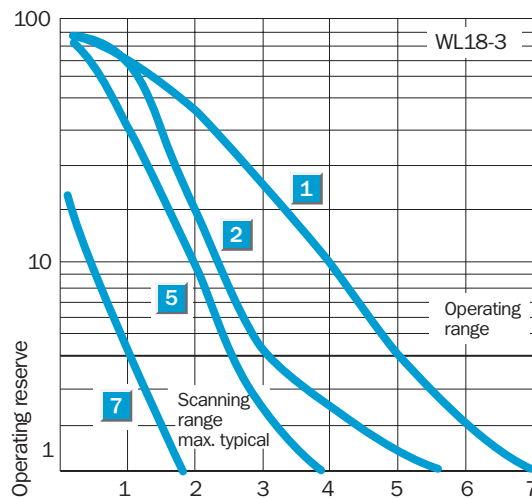
Technical data		WL18-3	P130	P430	P630	P730	N130	N430	N630	N730
<b>Scanning range</b> , max. typ./on reflector	7 m/PL80A									
Sensitivity	Adjustable, via Poti, 270°									
<b>Light source <sup>1)</sup>, light type</b>	LED, visible red light									
Angle of dispersion	4°									
Light spot diameter	40 mm at 2 m									
Polarising filter	Yes									
<b>Supply voltage <math>V_S</math></b>	10 ... 30 V DC <sup>2)</sup>									
Residual ripple <sup>4)</sup>	< 5 V <sub>PP</sub>									
Current consumption <sup>5)</sup>	< 40 mA									
Output current I <sub>A</sub> max.	< 100 mA									
<b>Switching outputs</b>	PNP, antivalent									
	NPN, antivalent									
Response time <sup>5)</sup>	500 μs									
Switching frequency max. <sup>6)</sup>	1000/s									
<b>Test input »TE«</b>	PNP: Sender off; TE to 0 V									
	NPN: Sender off; TE to V+									
<b>Connection types</b>	Cable <sup>7)</sup> , 2 m, 4 wire									
	M12 plug, 4-pin									
	Cubic plug, 6-pin									
	Cable, 2 m, 5 wire									
<b>VDE protection class cable <sup>8)</sup></b>	<input type="checkbox"/>									
<b>Circuit protection <sup>9)</sup></b>	A, B, C									
<b>Enclosure rating</b>	IP 67									
	IP 65									
<b>Ambient temperature</b>	Operation -40 °C ... +60 °C									
	Storage -40 °C ... +75 °C									
<b>Weight</b>	With cable, 2 m, approx. 120 g									
	With M12 plug, approx. 40 g									
	With cubic plug, ca. 40 g									
<b>Housing material</b>	ABS									

1) Average service life 100,000 h at T<sub>A</sub> = +25 °C  
 2) Limit values; Operation in short-circuit protected network max. 8 A  
 3) Must be within V<sub>S</sub> tolerances  
 4) Without load  
 5) Signal transit time with resistive load  
 6) With light/dark ratio 1:1  
 7) Do not bend below 0 °C  
 8) Reference voltage 50 V DC  
 9) A = V<sub>S</sub> connection reverse-polarity protected  
 B = Outputs short-circuit protected  
 C = Interference pulse suppression

**Scanning range**



Reflector type	Operating range
1 PL 80 A	0 ... 5.0 m
2 C 110	0 ... 3.0 m
3 PL 50 A	0 ... 4.0 m
4 PL 40 A	0 ... 3.0 m
5 PL 30 A	0 ... 2.5 m
6 PL 20 A	0 ... 2.0 m
7 Reflective tape Diamond Grade	0 ... 1.0 m



**Order information**

Type	Order no.
WL18-3P130	1025909
WL18-3P430	1025911
WL18-3P630	1025912
WL18-3P730	1026029
WL18-3N130	1025913
WL18-3N430	1025915
WL18-3N630	1025916
WL18-3N730	1026030

## X-ON Electronics

Largest Supplier of Electrical and Electronic Components

*Click to view similar products for [Photoelectric Sensors](#) category:*

*Click to view products by [Sick](#) manufacturer:*

Other Similar products are found below :

[E3JM-DS70R4T-US](#) [E3L2DC4](#) [E3RA-DN12 2M](#) [E3RA-DP12 2M](#) [E3S5LE4S](#) [E3S-AD38](#) [E3S-CR11 5M](#) [E3SCT11D5M](#) [E3SCT11M1J03M](#)  
[E3T-CT22S](#) [E3T-FD12R](#) [E3T-SL14R](#) [E3T-SL24 5M](#) [E3T-ST12R](#) [E3T-ST24 2M](#) [E3X-CN02](#) [E3X-CN11 5M](#) [E3X-CN21 10M](#) [E3ZM-B66](#)  
[E3ZM-CL81H 2M](#) [E3Z-T62 2M](#) [NJL5303R-TE1](#) [PB10CNT15PO](#) [PD60CNX20BP](#) [FZS](#) [CX-491-P-J](#) [CX-491-Z](#) [XUM2BKCNL2T](#)  
[XUM2BKCNL2T](#) [XUM2BNANL2R](#) [Y92E-ES30M](#) [Y92E-GS08SS](#) [ZXTDS04T](#) [ZX-XC4A 4M](#) [E3E23Y2US](#) [E3JM-DS70S4-US](#) [E3RA-](#)  
[RN11 2M](#) [E3S5LE42M](#) [E3S-LS20XB4 5M](#) [E3S-LS3PW 2M](#) [E3TFD14N](#) [E3T-FD14R](#) [E3T-SL21 5M](#) [E3T-SL21M](#) [E3T-ST11R](#) [E3T-ST12](#)  
[5M](#) [E3X-DA41-S-M1J 0.3M](#) [E3X-DAB6](#) [E3X-DAG8](#) [E3ZM-B86](#)