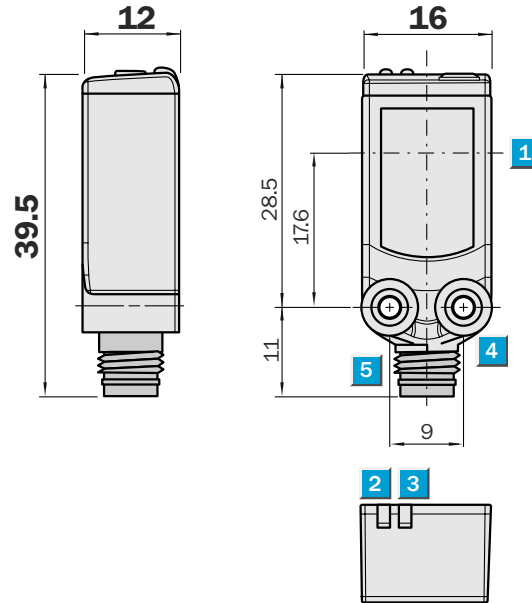


Scanning range
0 ... 5.5 m

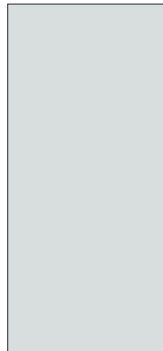
Through-beam photoelectric switch

- Fast and safe alignment through high visibility light spot
- Fast commissioning. Connect, align, ready!
- Easy assembly in slots and guide rails

Dimensional drawing



Adjustments possible

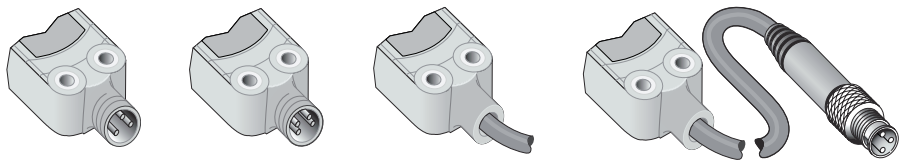


- 1 Centre of optical axis
- 2 LED signal strength indicator orange: status of received light beam
- 3 LED signal strength indicator green: power on
- 4 Mounting hole M3
- 5 Connector

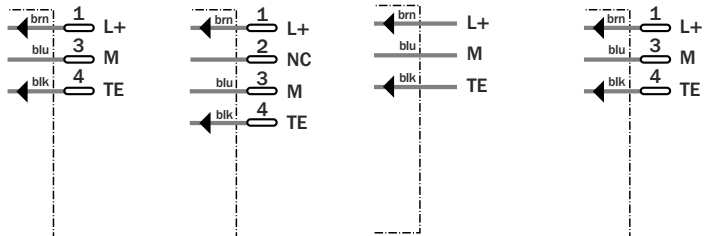


Connection type

WSE4-3N2130	WSE4-3P2230	WSE4-3N1330	WSE4-3P3130
WSE4-3P2130		WSE4-3P1330	
		WSE4-3P1330	

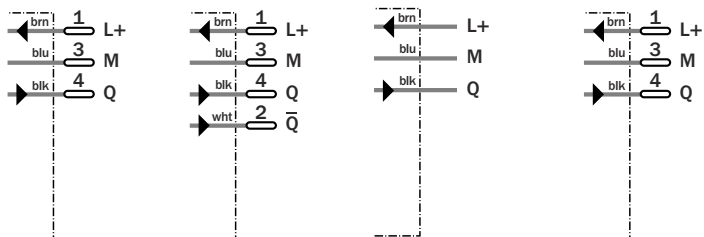


Sender M8, 3-pin M8, 4-pin 3 x 0.14 mm² M8, 3-pin



See Accessories chapter
Mounting systems

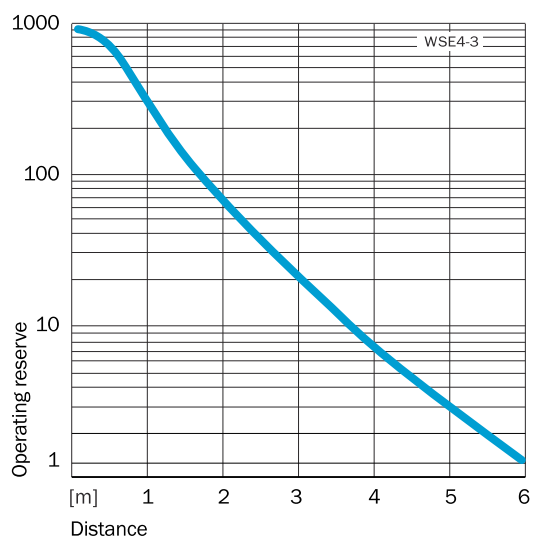
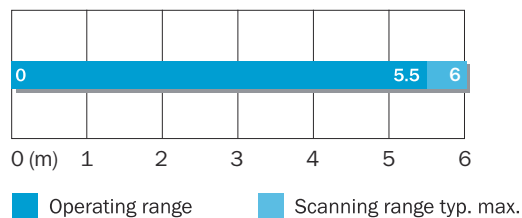
Receiver M8, 3-pin M8, 4-pin 3 x 0.14 mm² M8, 3-pin



WSE4-3		N1330	N2130	P1330	P1330	P2130	P2230	P3130			
Scanning range typ. max.	0 ... 5.5 m										
Scanning range, recommended	0 ... 6 m										
Light source, light type	Pin Point LED, red light, 650 nm ¹⁾										
Supply voltage V_s	DC 10 ... 30 V ²⁾										
Ripple	≤ 5 V _{SS} ³⁾										
Power consumption, sender	≤ 20 mA										
Power consumption, receiver	≤ 20 mA										
Switching outputs	NPN, Q										
	PNP, Q										
	PNP										
Switching mode	Light-switching										
	Complementary										
Output current I _a max	≤ 100 mA										
Response time	> 0.5 ms ⁴⁾										
Switching frequency	1,000 Hz ⁵⁾										
Connection type	Cable, 2 m ⁶⁾										
	Connector, M8, 3-pin ⁶⁾										
	Cable, 5 m ⁶⁾										
	Connector, M8, 4-pin										
	Cable with plug, M8, 3-pin, 100 mm ⁶⁾										
Circuit protection	V _s connections reverse-polarity protected / Output Q and Q not short-circuit protected / Interference suppression										
Enclosure rating	IP 66, IP 67										
Ambient temperature operation	-40 °C ... +60 °C										
Ambient temperature storage	-40 °C ... +70 °C										
Weight	Ca. 40 g										
Housing material	Bayblend, PMMA										

¹⁾ Average service life 100,000 h at T_a = +25 °C
²⁾ Limit values, reverse-polarity protected
³⁾ operation in short-circuit protected network max. 8 A
⁴⁾ May not exceed or fall short of
⁵⁾ V_s tolerances
⁶⁾ Signal transit time with resistive load
⁷⁾ With light/dark ratio 1:1
⁸⁾ Do not bend below 0 °C

Scanning range and operating reserve



Ordering information	
Model Name	Part Number
WSE4-3N1330	1 028 164
WSE4-3N2130	1 028 167
WSE4-3P1330	1 028 159
WSE4-3P1330	1 029 645
WSE4-3P2130	1 028 163
WSE4-3P2230	1 028 160
WSE4-3P3130	1 028 161

X-ON Electronics

Largest Supplier of Electrical and Electronic Components

Click to view similar products for [Photoelectric Sensors](#) category:

Click to view products by [Sick](#) manufacturer:

Other Similar products are found below :

[E3JM-DS70R4T-US](#) [E3L2DC4](#) [E3RA-DN12 2M](#) [E3RA-DP12 2M](#) [E3S5LE4S](#) [E3S-AD38](#) [E3S-CR11 5M](#) [E3SCT11D5M](#) [E3SCT11M1J03M](#)
[E3T-CT22S](#) [E3T-FD12R](#) [E3T-SL14R](#) [E3T-SL24 5M](#) [E3T-ST12R](#) [E3T-ST24 2M](#) [E3X-CN02](#) [E3X-CN11 5M](#) [E3X-CN21 10M](#) [E3ZM-B66](#)
[E3ZM-CL81H 2M](#) [E3Z-T62 2M](#) [NJL5303R-TE1](#) [PB10CNT15PO](#) [PD60CNX20BP](#) [FZS](#) [CX-491-P-J](#) [CX-491-Z](#) [XUM2BKCNL2T](#)
[XUM2BKCNL2T](#) [XUM2BNANL2R](#) [Y92E-ES30M](#) [Y92E-GS08SS](#) [ZXTDS04T](#) [ZX-XC4A 4M](#) [E3E23Y2US](#) [E3JM-DS70S4-US](#) [E3RA-](#)
[RN11 2M](#) [E3S5LE42M](#) [E3S-LS20XB4 5M](#) [E3S-LS3PW 2M](#) [E3TFD14N](#) [E3T-FD14R](#) [E3T-SL21 5M](#) [E3T-SL21M](#) [E3T-ST11R](#) [E3T-ST12](#)
[5M](#) [E3X-DA41-S-M1J 0.3M](#) [E3X-DAB6](#) [E3X-DAG8](#) [E3ZM-B86](#)