



Key Features

- Adjustable mount
- SMA/SMA-RP male connector
- Quad band GSM frequency
- 6dBi peak gain
- ISM: 868 and 915MHz
- 3G: 2100MHz

General Description

The Siretta Multiband whip antenna is based on a 2008 redesign giving excellent performance in the quad band GSM 800/900/1800/1900/2100MHz frequencies.

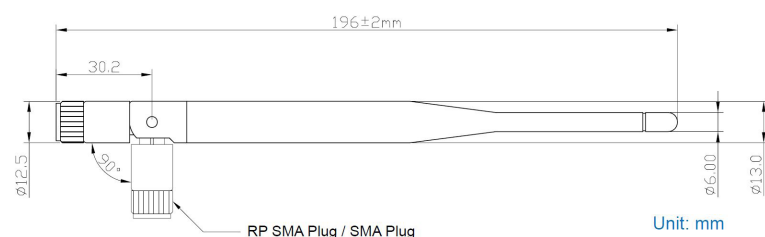
Terminated with an SMA/SMA-RP male connector, the unique knuckle adjusts through a 0 / 45 & 90 degree angle and swivels to ensure a vertical polarity when fitted to the radio module.

The radiating element consists of a two part design and is over moulded in black, high grade rubber giving a rugged, stylish finish.

The Delta 6A is a popular antenna for customers requiring a straightforward to fit, reliable product and is qualified and used with many of today's GSM / GPRS and 3G terminals.

Additional Considerations

- Ensures antenna can be flexibly installed with equipment
- Fits to most popular GSM / GPRS and 3G terminal equipment
- Does not rely on mounting on metallic surface
- Meets all EU compliance criteria for electronic goods



Rev 1.2

Key Specifications - Electrical

Storage temperature range:	-30 to 75 °C
Operating temperature range:	-20 to 60 °C
Impedance:	50 ohm
VSWR:	<2:1
Operating frequencies:	850, 900, 1800, 1900MHz
Polarization:	Vertical
Radiating element:	Dipole
Return loss:	880MHz - 6dB 960MHz - 12dB 1710MHz - 10dB 1990MHz - 9.9dB

Gain

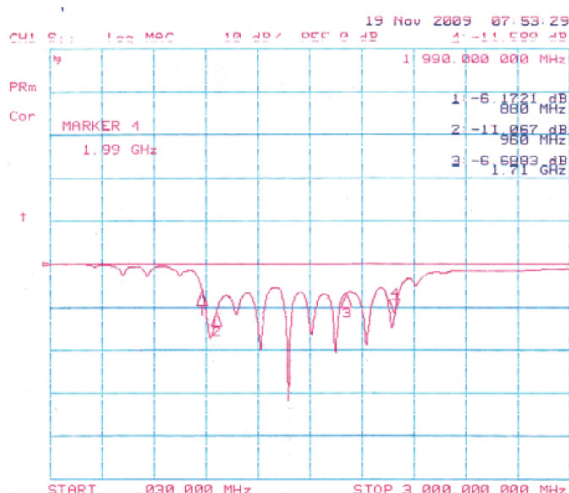
ISM	
868MHz:	4.1dBi
915MHz:	4.05dBi
GSM	
850MHz:	3.75dBi
900MHz:	4.02dBi
1800MHz:	6.78dBi
1900MHz:	6.2dBi
3G	
2100MHz:	3.44dBi

Key Specifications - Mechanical

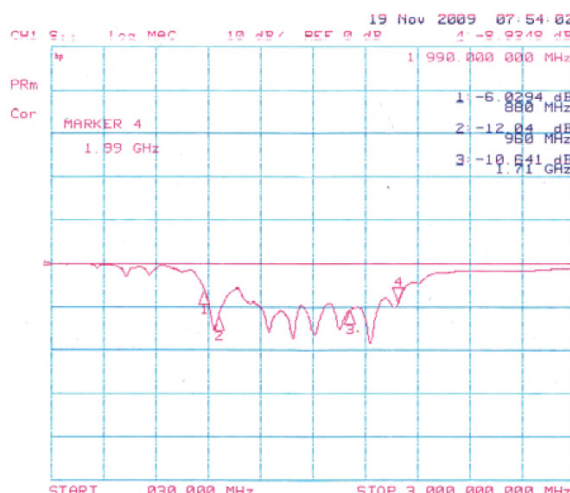
Dimensions:	187.5mm x 9.6mm
Connector:	SMA
Mounting method:	Direct connect

Test Reports

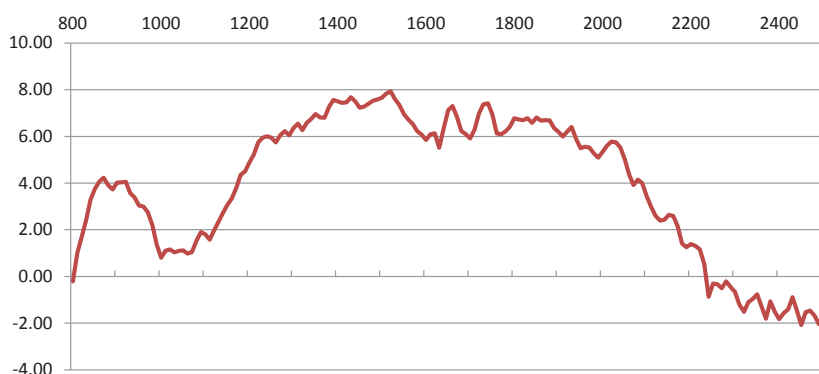
Vertical



Horizontal



Peak Gain (dBi)



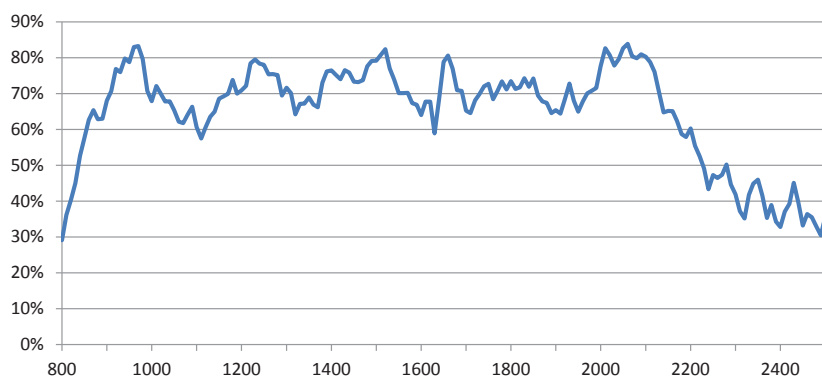
UL Tested (Basingstoke, UK)

Part: DELTA6A/x/SMAM/S/S/11

Ref No: 10339609JD01

Date: 28/05/2014

Efficiency %



UL Tested (Basingstoke, UK)

Part: DELTA6A/x/SMAM/S/S/11

Ref No: 10339609JD01

Date: 28/05/2014

Ordering Details

Part number

Description

DELTA6A/X/SMAM/S/S/11

Quad Band GSM, 3G & ISM Swivel Antenna, SMA Male Connector

X-ON Electronics

Largest Supplier of Electrical and Electronic Components

Click to view similar products for [SIRETTA](#) manufacturer:

Other Similar products are found below :

[ALPHA4A/5M/SMAM/S/S/26](#) [DELTA5A/X/SMAM/S/S/17](#) [OSCAR17/X/TNC/S/S/19](#) [DELTA5A/X/BNCM/S/S/17](#) [SNYPER-LTE-SPECTRUM](#) [ASMA2000F058L13](#) [ASMA2000C058L13](#) [TANGO14/5M/LL/SMAM/S/S/24](#) [TANGO1/1M/FMEF/S/S/4](#) [ASME500F058L13](#) [TANGO3/0.5M/SMAM/S/S/31](#) [TANGO40/X/NTYPEF/S/S/32](#) [QUARTZ-W22-LTE\(EU\)+ACC](#) [ASMA500B174L13](#) [31557](#) [ECHO40/0.1M/UFL/S/S/32](#) [MIKE1A/5M/FMEF/S/S/20](#) [QUARTZ-W22-UMTS\(EU\)+ACC](#) [TANGO11A/2.5M/SMAM/S/S/19](#) [ASMA500F058L13](#) [ZETA-N-UMTS](#) [ECHO11/0.2M/IPEX/S/S/12](#) [ASMA300E174L13](#) [ASMA1000F058L13](#) [DELTA19/X/SMAM/S/S/35](#) [ASMA2000E058L13](#) [ASMZG300F058L13](#) [MIKE3A/5M/SMAM/S/S/17](#) [TANGO15/3M/SMAM/SMAM/S/S/24](#) [TANGO20/3M/SMAM/S/S/26](#) [ASMZG500A058L13](#) [ASMZG1500F058L13](#) [ALPHA1A/2.5M/SMAM/S/S/11](#) [OSCAR40/10M/LL/SMAM/S/S/33](#) [TANGO11A/5M/LL/SMAM/S/S/19](#) [TANGO29/1M/SMAM/RP/S/35](#) [ASME2000F058L13](#) [ASMK015X174S11](#) [LC300-N2-GPRS](#) [DELTA6A/X/SMAM/S/S/11](#) [MIKE1A/2.5M/FMEF/S/S/20](#) [ASMZG1000F058L13](#) [OSCAR41/X/NTYPEF/S/S/29](#) [TANGO22/3M/SMAM/SMAM/SMAM/26](#) [OSCAR420/0.4M/NTYPEF/S/S/19](#) [ASMK010X174S11](#) [ZETA-N2-GPRS](#) [ADAPT/SMAM/RP](#) [OSCAR18/X/NF/S/S/22](#) [TANGO14/3M/SMAM/S/S/24](#)