

### Key Features

- Quad Band GSM Yagi
- 9 element
- 11dBi gain
- 570mm long



### General Description

The Oscar 3A is a low cost but well made enamel painted aluminium antenna. It has 9 elements and has a gain of 11dBi. The Oscar 3A dimensions are 570mm x 180mm x 36mm. This antenna is aimed at the professional installer market where good performance and quality of products and a sensible price is needed.

The Oscar 3A is not intended for serious all weather use as the FME connectormoulded into the antenna is not appropriate for all weather conditions compared to an N type connector. See the rest of the Oscar 3 range for other types suitable for more serious all weather use.

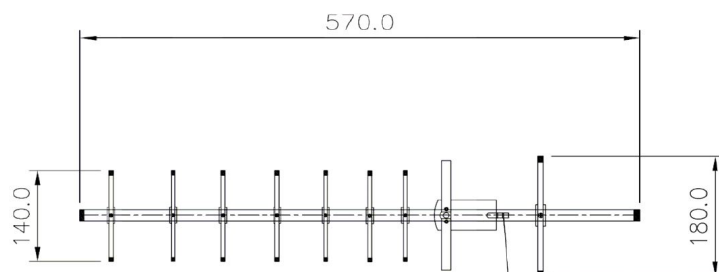
The Oscar 3A comes ready with a substantial universal clamp for use on most normal poles.

### Key Specifications - Electrical

|                        |                          |
|------------------------|--------------------------|
| Impedance:             | 50 ohm                   |
| Gain:                  | 11dBi                    |
| VSWR:                  | <1.6                     |
| Max power:             | 200 W                    |
| Operating frequencies: | 850, 900, 1800, 1900 MHz |
| Polarization:          | Vertical                 |

### Key Specifications - Mechanical

|                    |                      |
|--------------------|----------------------|
| Dimensions:        | 570mm x 180mm x 36mm |
| Antenna connector: | FME male             |

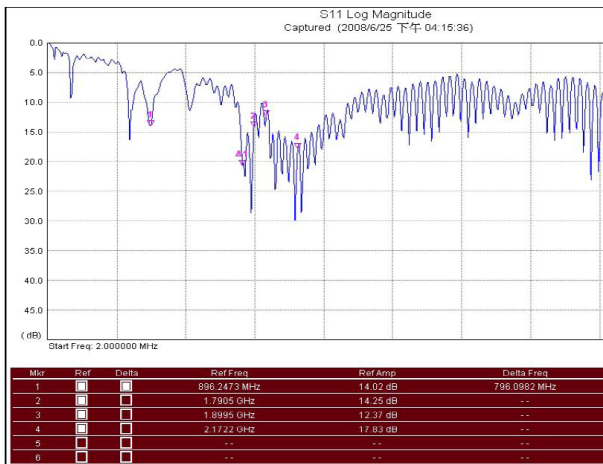


ANTENNA CONNECTOR : FME MALE

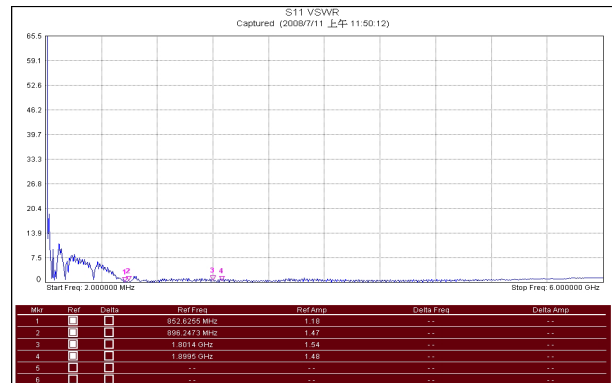
Rev 1.0

### Test Reports

#### Log Magnitude

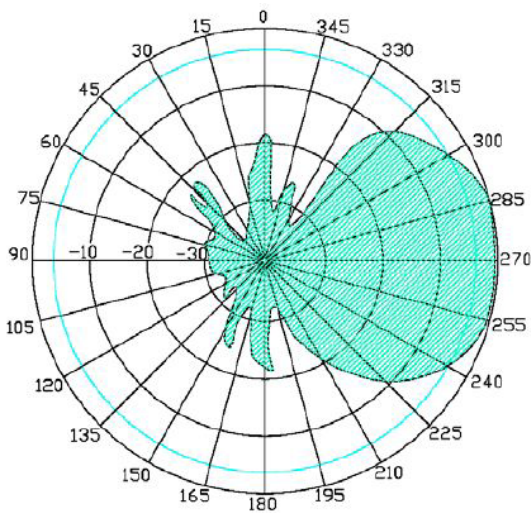


#### VSWR

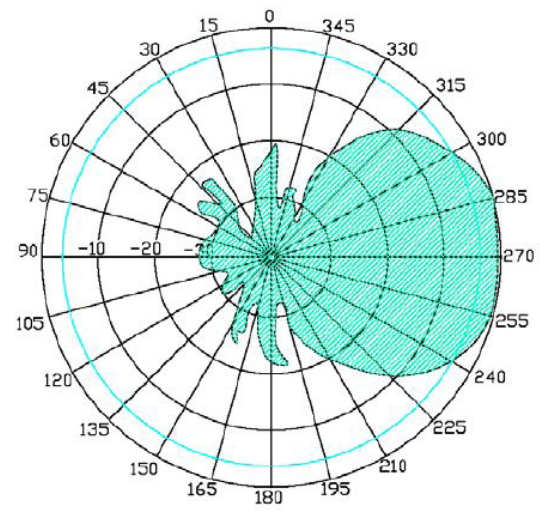


#### Radiation Pattern

##### H-Plane



##### E-Plane



## X-ON Electronics

Largest Supplier of Electrical and Electronic Components

*Click to view similar products for [SIRETTA](#) manufacturer:*

Other Similar products are found below :

[ALPHA4A/5M/SMAM/S/S/26](#) [DELTA5A/X/SMAM/S/S/17](#) [OSCAR17/X/TNC/S/S/19](#) [DELTA5A/X/BNCM/S/S/17](#) [SNYPER-LTE-SPECTRUM](#) [ASMA2000F058L13](#) [ASMA2000C058L13](#) [TANGO14/5M/LL/SMAM/S/S/24](#) [TANGO1/1M/FMEF/S/S/4](#) [ASME500F058L13](#) [TANGO3/0.5M/SMAM/S/S/31](#) [TANGO40/X/NTYPEF/S/S/32](#) [QUARTZ-W22-LTE\(EU\)+ACC](#) [ASMA500B174L13](#) [31557](#) [ECHO40/0.1M/UFL/S/S/32](#) [MIKE1A/5M/FMEF/S/S/20](#) [QUARTZ-W22-UMTS\(EU\)+ACC](#) [TANGO11A/2.5M/SMAM/S/S/19](#) [ASMA500F058L13](#) [ZETA-N-UMTS](#) [ECHO11/0.2M/IPEX/S/S/12](#) [ASMA300E174L13](#) [ASMA1000F058L13](#) [DELTA19/X/SMAM/S/S/35](#) [ASMA2000E058L13](#) [ASMZG300F058L13](#) [MIKE3A/5M/SMAM/S/S/17](#) [TANGO15/3M/SMAM/SMAM/S/S/24](#) [TANGO20/3M/SMAM/S/S/26](#) [ASMZG500A058L13](#) [ASMZG1500F058L13](#) [ALPHA1A/2.5M/SMAM/S/S/11](#) [OSCAR40/10M/LL/SMAM/S/S/33](#) [TANGO11A/5M/LL/SMAM/S/S/19](#) [TANGO29/1M/SMAM/RP/S/35](#) [ASME2000F058L13](#) [ASMK015X174S11](#) [LC300-N2-GPRS](#) [DELTA6A/X/SMAM/S/S/11](#) [MIKE1A/2.5M/FMEF/S/S/20](#) [ASMZG1000F058L13](#) [OSCAR41/X/NTYPEF/S/S/29](#) [TANGO22/3M/SMAM/SMAM/SMAM/26](#) [OSCAR420/0.4M/NTYPEF/S/S/19](#) [ASMK010X174S11](#) [ZETA-N2-GPRS](#) [ADAPT/SMAM/RP](#) [OSCAR18/X/NF/S/S/22](#) [TANGO14/3M/SMAM/S/S/24](#)