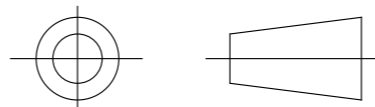


DRAWING No.
152146

SHT. 1
OF
1 SHTS.

© THE COPYRIGHT OF THIS DRAWING IS RESERVED BY HELLERMANN TYTON. IT IS ISSUED ON CONDITION THAT IT IS NOT COPIED, REPRODUCED OR DISCLOSED TO A THIRD PARTY EITHER WHOLLY OR IN PART WITHOUT THE CONSENT IN WRITING OF HELLERMANN TYTON.

THIRD ANGLE PROJECTION

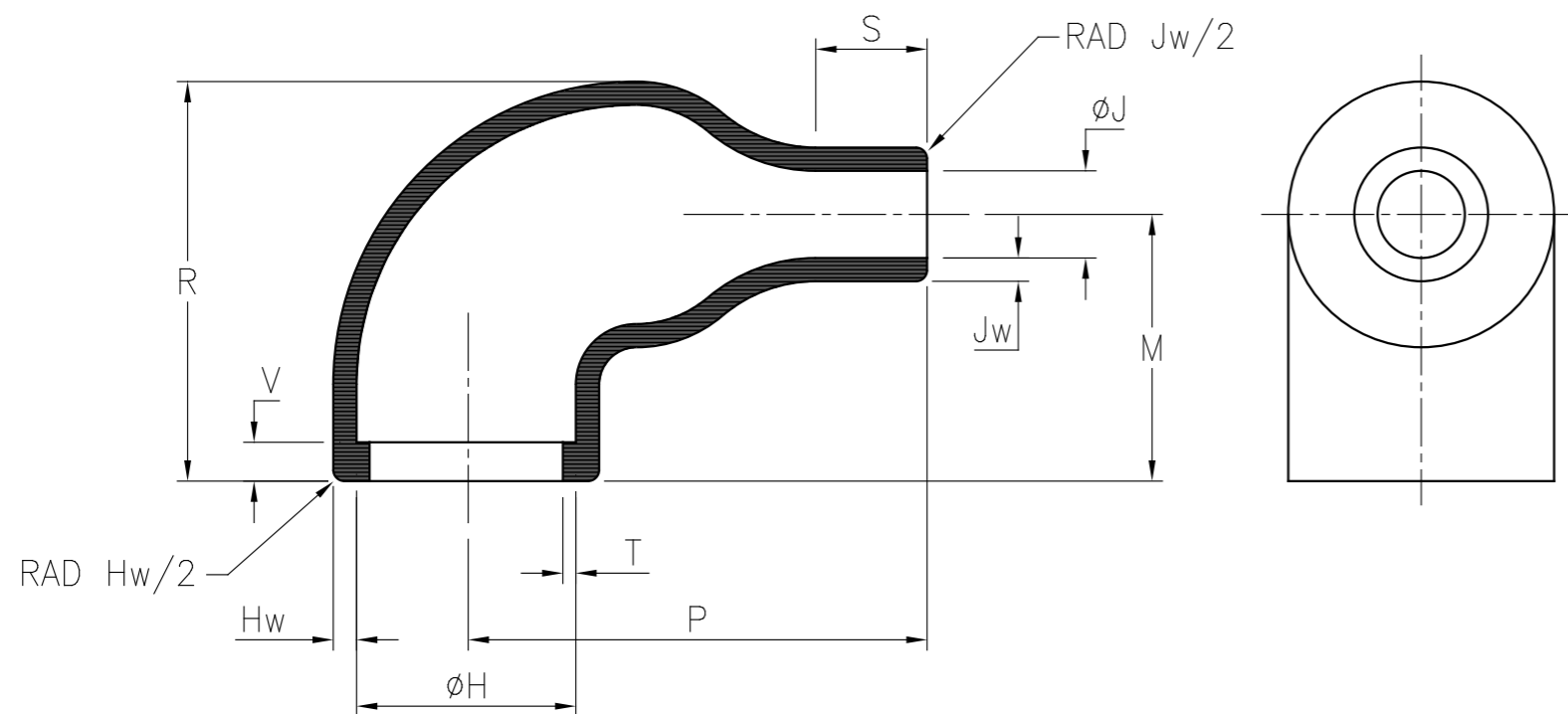


BS 8888

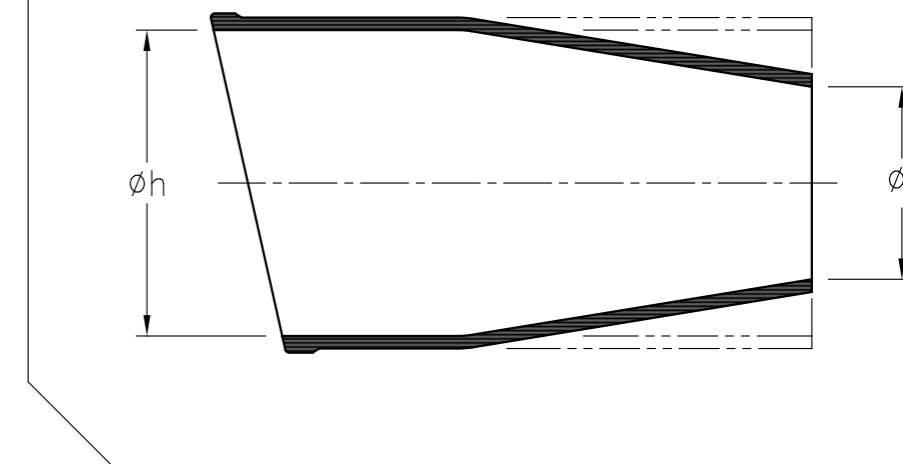
DO NOT SCALE
IF IN DOUBT ASK

Q.A.	H/S SETT
H/S Q.A.	REL. INSP.
H/S PROD	EXT.ISS.CODE 7

STANDARD PART (AFTER UNRESTRICTED RECOVERY)

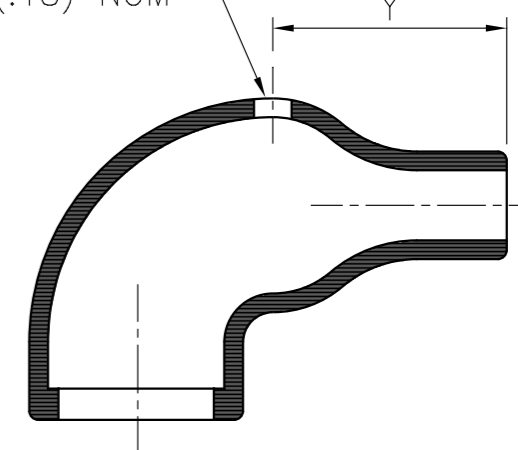


EXPANDED (AS SUPPLIED)



OPTION TO STANDARD PART
FILLER PORT (CODE P1)

1 FILLER PORT HOLE
ø4.5 (.18) NOM



PART No.	EXPANDED DIAMETERS (AS SUPPLIED)		RECOVERED DIAMETERS		RECOVERED DIMENSIONS							
	øh	øj	øH	øJ	M	P	R	S	T	V	Hw	Jw
	MIN	MIN	MAX	MAX	NOM	±10%	±10%	NOM	±20%	MAX	±20%	±30%
1108-4	16.5 (.65)	16.5 (.65)	7.9 (.31)	2.5 (.10)	15.2 (.60)	18.3 (.72)	20.1 (.79)	5.1 (.20)	1.0 (.04)	3.3 (.13)	1.0 (.04)	1.6 (.06)
1108-5	16.5 (.65)	7.6 (.30)	7.9 (.31)	2.5 (.10)	15.2 (.60)	18.3 (.72)	20.1 (.79)	5.1 (.20)	1.0 (.04)	3.3 (.13)	1.0 (.04)	1.6 (.06)

OPTIONAL FILLER PORT DETAIL	
PART No.	RECOVERED DIMENSIONS
	Y
1108-4	10 (.39)
1108-5	10 (.39)

HellermannTyton

William Prance Road,
Plymouth International Med. & Tech. Park,
Plymouth, PL6 5WR
Tel ++44 (0) 1752 701261
Fax ++44 (0) 1752 790058

NAME	S.Almond	SCALE	NTS	ADHESIVE	A3 ORIGINAL SHEET SIZE 420mm x 297mm	SHT. 1 OF 1 SHTS.
DATE	28/05/08	DIMS IN	mm (in)			
TITLE	RT. ANGLE SLEEVE (RIBBED)		PART No.	1108	DRAWING No.	152146

2	P1329	G.B.	11/10/10
1	P1201	S.Almond	28/05/08
ISSUE	NOTE No.	DRAWN	DATE

X-ON Electronics

Largest Supplier of Electrical and Electronic Components

Click to view similar products for [Hellermann](#) manufacturer:

Other Similar products are found below :

[111-03250](#) [RSB2](#) [ETST668](#) [T18RPOCKETPAC](#) [217-2B7W1](#) [380-03003](#) [406064A](#) [TSR1I-21](#) [TSR1I-29](#) [TSR1I-33](#) [TSR1I-36](#) [1126-4JW8](#)
[RSB6](#) [MS3109-12AU](#) [Q30LR-PA66-BK-C1](#) [HWCLIP16 BLACK](#) [RLT150.NB2P](#) [T50IDH0C2](#) [T30MR BLACK](#) [AS45](#) [LPH275 BLACK](#)
[T120R.RN3P](#) [MK7.9A](#) [181-50840](#) [TWT2](#) [MCTPP50L](#) [MCTPP120R](#) [MBT14H](#) [G51P-A-PE-NA](#) [E4500](#) [TSRI-JB2](#) [SBS2 YELLOW](#) [309-](#)
[65110](#) [309-65129](#) [309-65214](#) [309-65298](#) [309-65300](#) [309-65105](#) [309-65117](#) [309-65118](#) [309-65164](#) [NGM20-RED](#) [NGM20-WH](#) [H75X25](#)
[RED](#) [HA67-69.8-11.7](#) [HA67-88.9-17.1](#) [321-50012](#) [HEGPA6614 GREY](#) [HIS-3-9/3-PEX-CL](#) [HIS-3 12/4 CLR](#)