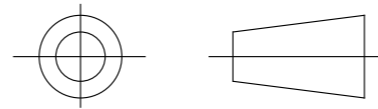


DRAWING No.
152211

SHT. 1
OF
SHTS.

© THE COPYRIGHT OF THIS DRAWING IS RESERVED BY HELLERMANN TYTON. IT IS ISSUED ON CONDITION THAT IT IS NOT COPIED, REPRODUCED OR DISCLOSED TO A THIRD PARTY EITHER WHOLLY OR IN PART WITHOUT THE CONSENT IN WRITING OF HELLERMANN TYTON.

THIRD ANGLE PROJECTION



BS 8888

DO NOT SCALE
IF IN DOUBT ASK

Q.A.	H/S SETT
H/S Q.A.	REL. INSP.
H/S PROD	EXT. ISS. CODE

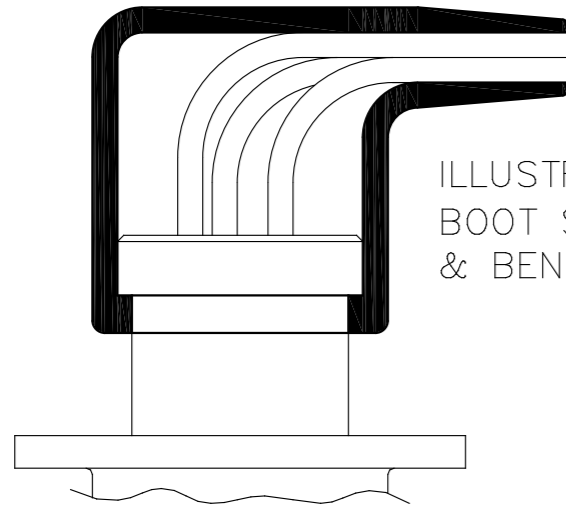
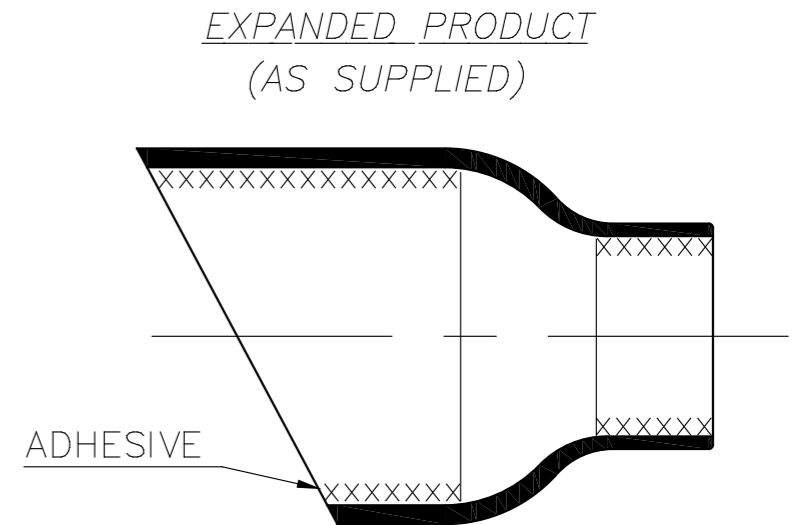
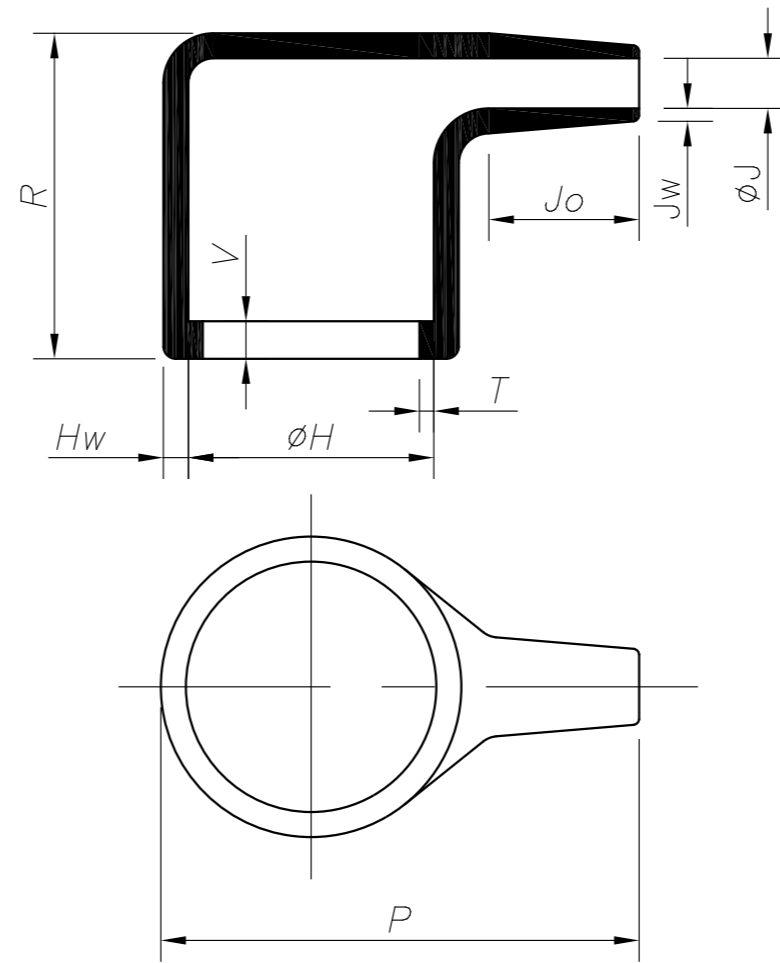


ILLUSTRATION OF INSTALLED BOOT SHOWING WIRE PATHS & BEND RADII



EXPANDED PRODUCT
(AS SUPPLIED)

ADHESIVE
W24 ADHESIVE APPLICATION
ONLY INTERNAL PARALLEL SURFACES TO BE COATED AS SHOWN

NOTE 2.0mm DIAMETER TAIL DIMENSION EXPANDED TO 6.0mm WILL ACCOMMODATE MIN & MAX WIRE BUNDLES
MIN - 2 x 28 AWG + 1/8" SLEEVING (3.0mm DIA)
MAX - 5 x 24 AWG + 3/16" SLEEVING (4.0mm DIA)

PART NO.	EXPANDED DIA'S (AS SUPPLIED)		RECOVERED DIA'S		RECOVERED DIMENSIONS							APPROX. WEIGHT (g)
	H MIN	J MIN	H MAX	J MAX	P±10%	R±10%	Jo±10%	V±10%	T±10%	Hw±20%	Jw±30%	
1181-4	12.0 (0.47)	6.0 (0.24)	9.8 (0.38)	2.0 (0.08)	19.0 (0.75)	13.0 (0.51)	6.0 (0.24)	1.5 (0.06)	0.6 (0.02)	1.0 (0.04)	0.5 (0.02)	0.7
1181-5	12.0 (0.47)	4.0 (0.16)	9.8 (0.38)	2.0 (0.08)	19.0 (0.75)	13.0 (0.51)	6.0 (0.24)	1.5 (0.06)	0.6 (0.02)	1.0 (0.04)	0.7 (0.03)	1.0

HellermannTyton

William Prance Road,
Plymouth International Med. & Tech. Park,
Plymouth, PL6 5WR
Tel ++44 (0) 1752 701261
Fax ++44 (0) 1752 790058

NAME	Chrism	SCALE	NTS
DATE	07/09/2009	DIMS IN	mm (in)
TITLE	RIGHT ANGLE BOOT		

MATERIAL	A3	SHT. 1 OF SHTS.
	ORIGINAL SHEET SIZE 420mm x 297mm	
PART No.	1181	DRAWING No. 152211

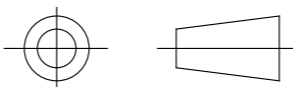
1	P1283	CM	10/07/09
ISSUE	NOTE No.	DRAWN	DATE

DRAWING No.
152211

SHT. 1
OF
SHTS.

© THE COPYRIGHT OF THIS DRAWING IS RESERVED BY HELLERMANN TYTON. IT IS ISSUED ON CONDITION THAT IT IS NOT COPIED, REPRODUCED OR DISCLOSED TO A THIRD PARTY EITHER WHOLLY OR IN PART WITHOUT THE CONSENT IN WRITING OF HELLERMANN TYTON.

THIRD ANGLE PROJECTION



BS 8888

DO NOT SCALE
IF IN DOUBT ASK

Q.A.	H/S SETT
H/S Q.A.	REL. INSP.
H/S PROD	EXT.ISS.CODE

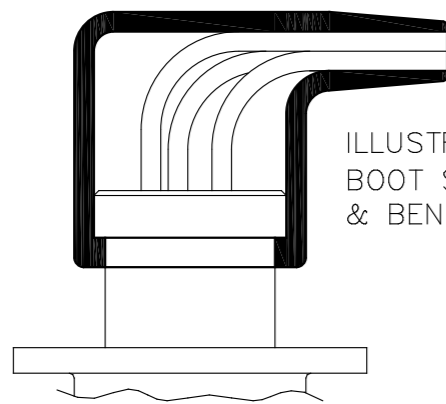
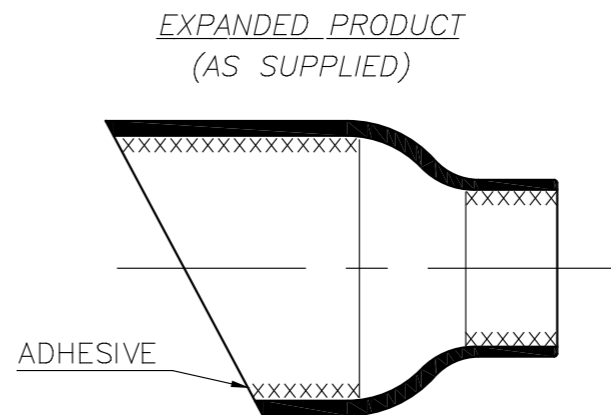
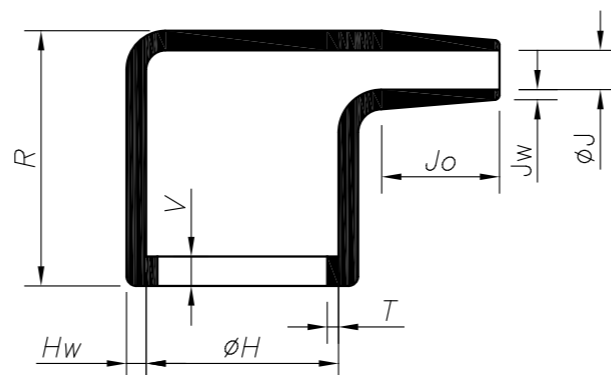


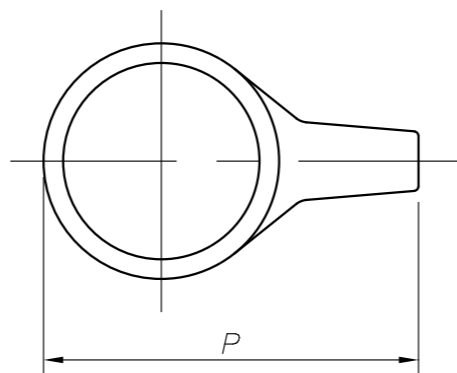
ILLUSTRATION OF INSTALLED
BOOT SHOWING WIRE PATHS
& BEND RADII



EXPANDED PRODUCT
(AS SUPPLIED)

ADHESIVE

NOTE 2.0mm DIAMETER TAIL DIMENSION EXPANDED TO 6.0mm
WILL ACCOMMODATE MIN & MAX WIRE BUNDLES
MIN - 2 x 28 AWG + 1/8" SLEEVING (3.0mm DIA)
MAX - 5 x 24 AWG + 3/16" SLEEVING (4.0mm DIA)



W24 ADHESIVE APPLICATION

ONLY INTERNAL PARALLEL SURFACES TO
BE COATED AS SHOWN

PART NO.	EXPANDED DIA'S (AS SUPPLIED)		RECOVERED DIA'S		RECOVERED DIMENSIONS							APPROX. WEIGHT (g)
	H MIN	J MIN	H MAX	J MAX	P±10%	R±10%	Jo±10%	V±10%	T±10%	Hw±20%	Jw±30%	
1181-4	12.0 (0.47)	6.0 (0.24)	9.8 (0.38)	2.0 (0.08)	19.0 (0.75)	13.0 (0.51)	6.0 (0.24)	1.5 (0.06)	0.6 (0.02)	1.0 (0.04)	0.5 (0.02)	0.7
1181-5	12.0 (0.47)	4.0 (0.16)	9.8 (0.38)	2.0 (0.08)	19.0 (0.75)	13.0 (0.51)	6.0 (0.24)	1.5 (0.06)	0.6 (0.02)	1.0 (0.04)	0.7 (0.03)	1.0

HellermannTyton

William Prance Road,
Plymouth International Med. & Tech. Park,
Plymouth, PL6 5WR
Tel ++44 (0) 1752 701261
Fax ++44 (0) 1752 790058

NAME	Chrism	SCALE	NTS
DATE	07/09/2009	DIMS IN	mm (in)
TITLE	RIGHT ANGLE BOOT		

MATERIAL	
PART No.	1181

A3	SHT. 1
ORIGINAL SHEET SIZE 420mm x 297mm	OF
DRAWING No.	SHTS.
152211	

1	P1283	CM	10/07/09
ISSUE	NOTE No.	DRAWN	DATE

X-ON Electronics

Largest Supplier of Electrical and Electronic Components

Click to view similar products for [Hellermann](#) manufacturer:

Other Similar products are found below :

[111-03250](#) [RSB2](#) [ETST668](#) [T18RPOCKETPAC](#) [217-2B7W1](#) [380-03003](#) [406064A](#) [TSR1I-21](#) [TSR1I-29](#) [TSR1I-33](#) [TSR1I-36](#) [1126-4JW8](#)
[RSB6](#) [MS3109-12AU](#) [Q30LR-PA66-BK-C1](#) [HWCLIP16 BLACK](#) [RLT150.NB2P](#) [T50IDH0C2](#) [T30MR BLACK](#) [AS45](#) [LPH275 BLACK](#)
[T120R.RN3P](#) [MK7.9A](#) [181-50840](#) [TWT2](#) [MCTPP50L](#) [MCTPP120R](#) [MBT14H](#) [G51P-A-PE-NA](#) [E4500](#) [TSRI-JB2](#) [SBS2 YELLOW](#) [309-](#)
[65110](#) [309-65129](#) [309-65214](#) [309-65298](#) [309-65300](#) [309-65105](#) [309-65117](#) [309-65118](#) [309-65164](#) [NGM20-RED](#) [NGM20-WH](#) [H75X25](#)
[RED](#) [HA67-69.8-11.7](#) [HA67-88.9-17.1](#) [321-50012](#) [HEGPA6614 GREY](#) [HIS-3-9/3-PEX-CL](#) [HIS-3 12/4 CLR](#)