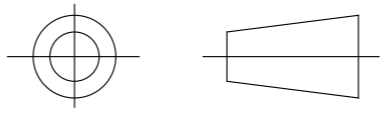


DRAWING No.  
**152165**

SHT. 1  
OF  
1 SHTS.

© THE COPYRIGHT OF THIS DRAWING IS RESERVED BY HELLERMANN TYTON. IT IS ISSUED ON CONDITION THAT IT IS NOT COPIED, REPRODUCED OR DISCLOSED TO A THIRD PARTY EITHER WHOLLY OR IN PART WITHOUT THE CONSENT IN WRITING OF HELLERMANN TYTON.

THIRD ANGLE PROJECTION



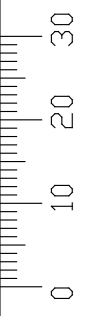
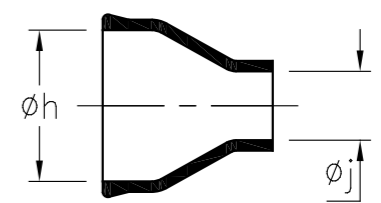
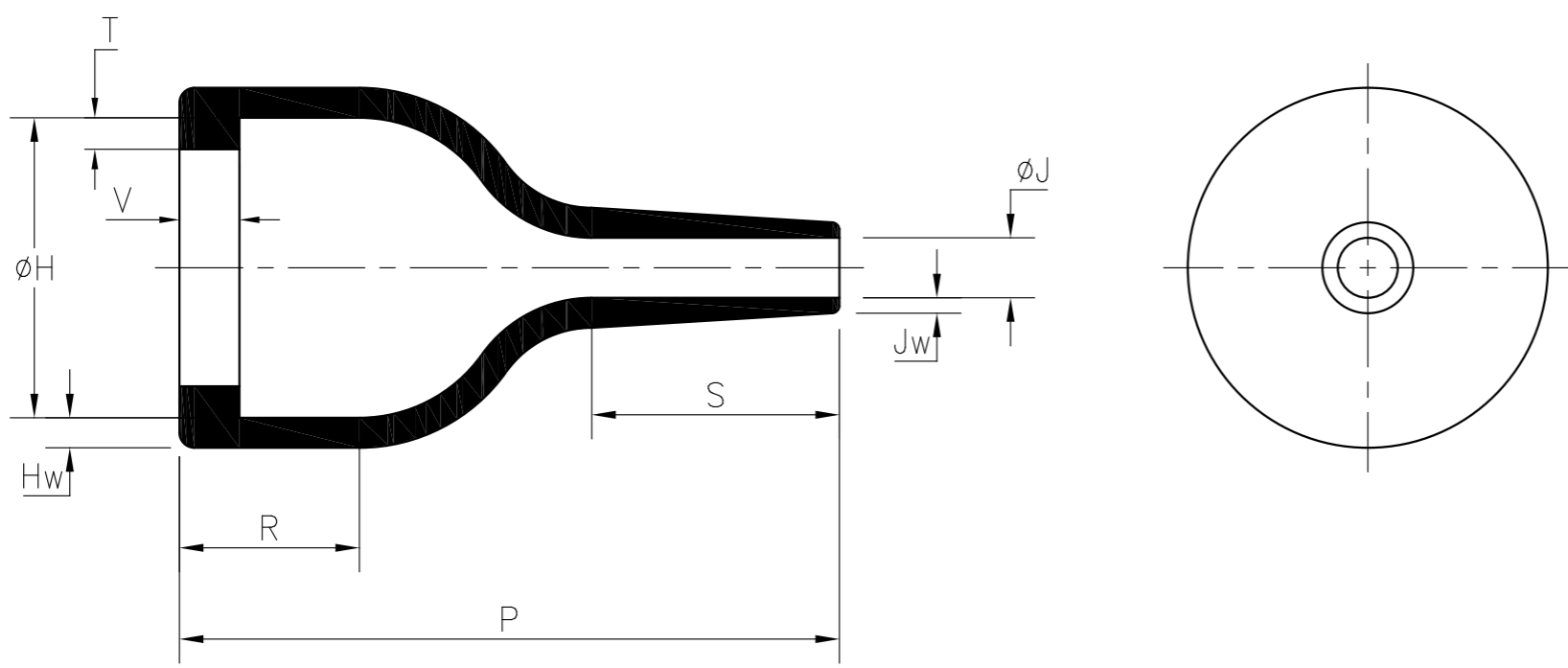
BS 8888

DO NOT SCALE  
IF IN DOUBT ASK

|          |                  |
|----------|------------------|
| Q.A.     | H/S SETT         |
| H/S Q.A. | REL. INSP.       |
| H/S PROD | EXT. ISS. CODE 7 |

STANDARD PART (AFTER UNRESTRICTED RECOVERY)

EXPANDED (AS SUPPLIED)



| PART No. | EXPANDED DIAMETERS (AS SUPPLIED) |               | RECOVERED DIAMETERS |               | RECOVERED DIMENSIONS |               |               |               |               |               |               | APPROX. WEIGHT (g) |
|----------|----------------------------------|---------------|---------------------|---------------|----------------------|---------------|---------------|---------------|---------------|---------------|---------------|--------------------|
|          | $\phi_h$                         | $\phi_j$      | $\phi_H$            | $\phi_J$      | P                    | R             | S             | T             | V             | Hw            | Jw            |                    |
|          | MIN                              | MIN           | MAX                 | MAX           | $\pm 10\%$           | $\pm 10\%$    | $\pm 10\%$    | $\pm 20\%$    | MAX           | $\pm 20\%$    | $\pm 30\%$    |                    |
| 1030-4   | 12.0<br>(0.47)                   | 6.0<br>(0.24) | 9.8<br>(0.39)       | 2.0<br>(0.08) | 19.0<br>(0.75)       | 8.0<br>(0.31) | 4.6<br>(0.18) | 0.6<br>(0.02) | 1.5<br>(0.06) | 1.0<br>(0.04) | 0.5<br>(0.02) | 0.6                |
| 1030-5   | 12.0<br>(0.47)                   | 4.0<br>(0.16) | 9.8<br>(0.39)       | 2.0<br>(0.08) | 19.0<br>(0.75)       | 8.0<br>(0.31) | 4.6<br>(0.18) | 0.6<br>(0.02) | 1.5<br>(0.06) | 1.0<br>(0.04) | 0.5<br>(0.02) | 0.6                |

**NOTE**  
2.0 mm DIAMETER TAIL DIMENSION EXPANDED TO 6.0 mm WILL ACCOMMODATE MIN & MAX WIRE BUNDLES  
MIN - 2 x 28 AWG + 1/8" SLEEVING 3.0 mm DIAMETER  
MAX - 5 x 24 AWG + 3/16" SLEEVING 4.0 mm DIAMETER

|       |          |       |          |
|-------|----------|-------|----------|
| 3     | P1329    | G.B.  | 11/10/10 |
| 2     | P1309    | CM    | 15/04/10 |
| 1     | P1227    | G.B.  | 18/08/08 |
| ISSUE | NOTE No. | DRAWN | DATE     |

**HellermannTyton**  
William Prance Road,  
Plymouth International Med. & Tech. Park,  
Plymouth, PL6 5WR  
Tel ++44 (0) 1752 701261  
Fax ++44 (0) 1752 790058

NAME **G.Baser** SCALE NTS  
DATE **18/08/08** DIMS IN mm (in)  
TITLE **BOTTLE SLEEVE (RIBBED)**

ADHESIVE  
A3 ORIGINAL SHEET SIZE 420mm x 297mm  
SHT. 1 OF 1 SHTS.  
PART No. **1030**  
DRAWING No. **152165**

## X-ON Electronics

Largest Supplier of Electrical and Electronic Components

*Click to view similar products for [Hellermann](#) manufacturer:*

Other Similar products are found below :

[111-03250](#) [RSB2](#) [ETST668](#) [T18RPOCKETPAC](#) [217-2B7W1](#) [380-03003](#) [406064A](#) [TSR1I-21](#) [TSR1I-29](#) [TSR1I-33](#) [TSR1I-36](#) [1126-4JW8](#)  
[RSB6](#) [MS3109-12AU](#) [Q30LR-PA66-BK-C1](#) [HWCLIP16 BLACK](#) [RLT150.NB2P](#) [T50IDH0C2](#) [T30MR BLACK](#) [AS45](#) [LPH275 BLACK](#)  
[T120R.RN3P](#) [MK7.9A](#) [181-50840](#) [TWT2](#) [MCTPP50L](#) [MCTPP120R](#) [MBT14H](#) [G51P-A-PE-NA](#) [E4500](#) [TSRI-JB2](#) [SBS2 YELLOW](#) [309-](#)  
[65110](#) [309-65129](#) [309-65214](#) [309-65298](#) [309-65300](#) [309-65105](#) [309-65117](#) [309-65118](#) [309-65164](#) [NGM20-RED](#) [NGM20-WH](#) [H75X25](#)  
[RED](#) [HA67-69.8-11.7](#) [HA67-88.9-17.1](#) [321-50012](#) [HEGPA6614 GREY](#) [HIS-3-9/3-PEX-CL](#) [HIS-3 12/4 CLR](#)