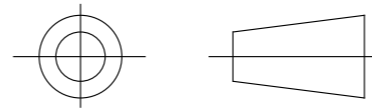


DRAWING No.
152188

SHT. 1
OF
1 SHTS.

© THE COPYRIGHT OF THIS DRAWING IS RESERVED BY HELLERMANN TYTON. IT IS ISSUED ON CONDITION THAT IT IS NOT COPIED, REPRODUCED OR DISCLOSED TO A THIRD PARTY EITHER WHOLLY OR IN PART WITHOUT THE CONSENT IN WRITING OF HELLERMANN TYTON.

THIRD ANGLE PROJECTION

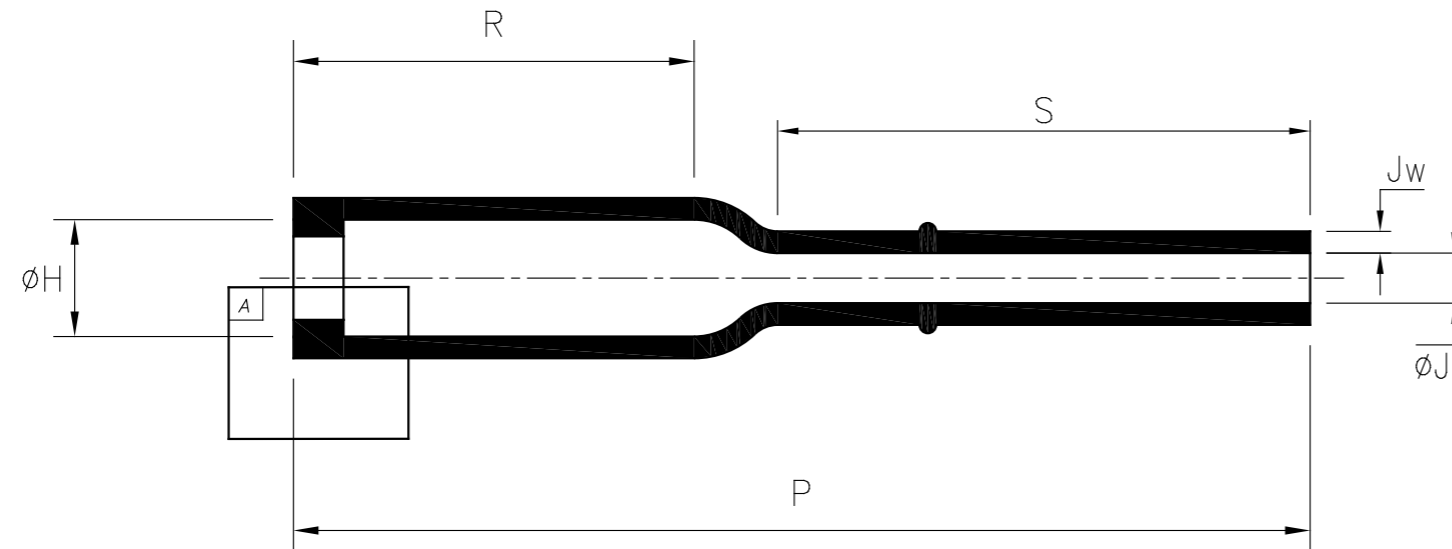


BS 8888

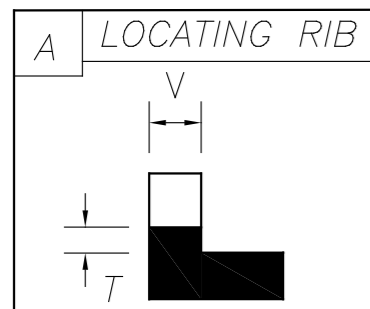
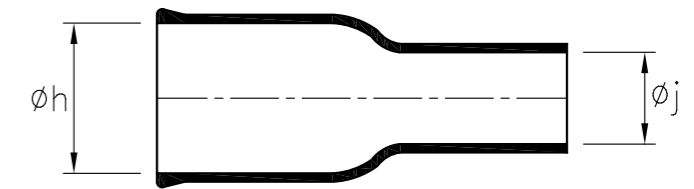
DO NOT SCALE
IF IN DOUBT ASK

Q.A.	H/S SETT
H/S Q.A.	REL. INSP.
H/S PROD	EXT. ISS. CODE 7

STANDARD PART (AFTER UNRESTRICTED RECOVERY)



EXPANDED (AS SUPPLIED)



PART No.	EXPANDED DIAMETERS (AS SUPPLIED)		RECOVERED DIAMETERS		RECOVERED DIMENSIONS						
	øh	øj	øH	øJ	P	R	S	T	V	Hw	Jw
	MIN	MIN	MAX	MAX	±10%	NOM	NOM	±20%	MAX	±20%	±20%
120-41	16.5 (0.65)	10.7 (0.42)	7.0 (0.28)	3.0 (0.12)	38.0 (1.50)	24.0 (0.94)	9.10 (0.36)	1.0 (.04)	3.0 (0.12)	1.30 (0.05)	1.30 (0.05)
120-42	16.5 (0.65)	10.2 (0.40)	7.0 (0.28)	3.0 (0.12)	60.9 (2.40)	24.0 (0.94)	32.0 (1.26)	1.0 (.04)	3.0 (0.12)	1.30 (0.05)	1.30 (0.05)
120-43	24.0 (0.94)	16.0 (0.63)	7.0 (0.28)	3.0 (0.12)	38.0 (1.50)	24.0 (0.94)	9.10 (0.36)	1.0 (.04)	3.0 (0.12)	1.30 (0.05)	1.30 (0.05)
120-51	14.0 (0.55)	6.0 (0.24)	7.0 (0.28)	3.0 (0.12)	38.0 (1.50)	24.0 (0.94)	9.10 (0.36)	1.0 (.04)	3.0 (0.12)	1.30 (0.05)	1.30 (0.05)

HellermannTyton

William Prance Road,
Plymouth International Med. & Tech. Park,
Plymouth, PL6 5WR
Tel ++44 (0) 1752 701261
Fax ++44 (0) 1752 790058

NAME G.Baser SCALE NTS
DATE 19/02/09 DIMS IN mm (in)

TITLE BOTTLE SLEEVE (RIBBED)

ADHESIVE

A3
ORIGINAL SHEET SIZE
420mm x 297mm

SHT. 1
OF
1 SHTS.

PART No.
120

DRAWING No.
152188

2	P1329	G.B.	11/10/10
1	P1260	G.B.	19/02/09
ISSUE	NOTE No.	DRAWN	DATE

X-ON Electronics

Largest Supplier of Electrical and Electronic Components

Click to view similar products for [Hellermann](#) manufacturer:

Other Similar products are found below :

[111-03250](#) [RSB2](#) [ETST668](#) [T18RPOCKETPAC](#) [217-2B7W1](#) [380-03003](#) [406064A](#) [TSR1I-21](#) [TSR1I-29](#) [TSR1I-33](#) [TSR1I-36](#) [1126-4JW8](#)
[RSB6](#) [MS3109-12AU](#) [Q30LR-PA66-BK-C1](#) [HWCLIP16 BLACK](#) [RLT150.NB2P](#) [T50IDH0C2](#) [T30MR BLACK](#) [AS45](#) [LPH275 BLACK](#)
[T120R.RN3P](#) [MK7.9A](#) [181-50840](#) [TWT2](#) [MCTPP50L](#) [MCTPP120R](#) [MBT14H](#) [G51P-A-PE-NA](#) [E4500](#) [TSRI-JB2](#) [SBS2 YELLOW](#) [309-](#)
[65110](#) [309-65129](#) [309-65214](#) [309-65298](#) [309-65300](#) [309-65105](#) [309-65117](#) [309-65118](#) [309-65164](#) [NGM20-RED](#) [NGM20-WH](#) [H75X25](#)
[RED](#) [HA67-69.8-11.7](#) [HA67-88.9-17.1](#) [321-50012](#) [HEGPA6614 GREY](#) [HIS-3-9/3-PEX-CL](#) [HIS-3 12/4 CLR](#)