

**WIRING TROUGH, NEMA TYPE 3R**

**INDUSTRY STANDARDS**

UL 870 Listed; File No. E27524; Raintight  
 cUL CSA C22.2 No. 26 Listed; File No. E27524; Raintight

NEMA/EEMAC Type 3R  
 IEC 60529, IP32

**APPLICATION**

Available in a range of sizes, this wiring trough meets basic functionality requirements for applications subjected to moisture.

**FEATURES**

- Drip shield top and seam-free sides, front, and back
- Slip-on removable cover
- Embossed mounting holes on back of enclosure
- Provision for padlocking
- No gasketing or knockouts

**SPECIFICATIONS**

- 16 or 14 gauge plated steel

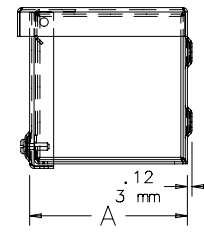
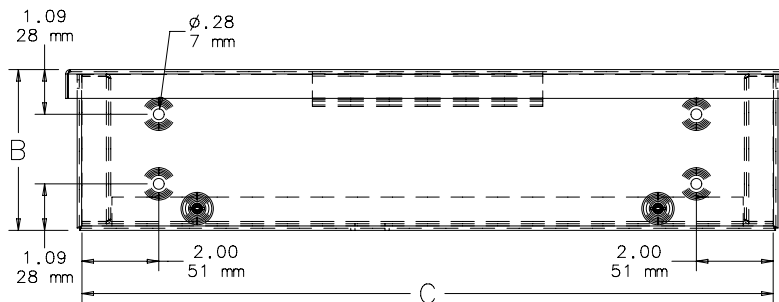
**FINISH**

ANSI 61 gray polyester powder paint finish inside and out over pretreated surfaces.

**ACCESSORIES**

See also *Accessories chapter*.  
 Touch-Up Paint (ATPPY61)

**BULLETIN: F40PT**



87552191

## Standard Product

Catalog Number	AxBxC in.	AxBxC mm	Gauge
A4412RT	4.00 x 4.00 x 12.00	102 x 102 x 305	16
A4418RT	4.00 x 4.00 x 18.00	102 x 102 x 457	16
A4424RT	4.00 x 4.00 x 24.00	102 x 102 x 610	16
A4436RT	4.00 x 4.00 x 36.00	102 x 102 x 914	16
A4448RT	4.00 x 4.00 x 48.00	102 x 102 x 1219	16
A4460RT	4.00 x 4.00 x 60.00	102 x 102 x 1524	16
A4472RT	4.00 x 4.00 x 72.00	102 x 102 x 1829	16
A6612RT	6.00 x 6.00 x 12.00	152 x 152 x 305	16
A6618RT	6.00 x 6.00 x 18.00	152 x 152 x 457	16
A6624RT	6.00 x 6.00 x 24.00	152 x 152 x 610	16
A6636RT	6.00 x 6.00 x 36.00	152 x 152 x 914	16
A6648RT	6.00 x 6.00 x 48.00	152 x 152 x 1219	16
A6660RT	6.00 x 6.00 x 60.00	152 x 152 x 1524	16
A6672RT	6.00 x 6.00 x 72.00	152 x 152 x 1829	16
A8812RT	8.00 x 8.00 x 12.00	203 x 203 x 305	14
A8824RT	8.00 x 8.00 x 24.00	203 x 203 x 610	14
A8836RT	8.00 x 8.00 x 36.00	203 x 203 x 914	14
A8848RT	8.00 x 8.00 x 48.00	203 x 203 x 1219	14
A8860RT	8.00 x 8.00 x 60.00	203 x 203 x 1524	14
A8872RT	8.00 x 8.00 x 72.00	203 x 203 x 1829	14
A8896RT	8.00 x 8.00 x 96.00	203 x 203 x 2438	14
A88116RT	8.00 x 8.00 x 116.00	203 x 203 x	14
A101024RT	10.00 x 10.00 x 24.00	254 x 254 x 610	14
A101036RT	10.00 x 10.00 x 36.00	254 x 254 x 914	14
A101048RT	10.00 x 10.00 x 48.00	254 x 254 x 1219	14
A101060RT	10.00 x 10.00 x 60.00	254 x 254 x 1524	14
A101072RT	10.00 x 10.00 x 72.00	254 x 254 x 1829	14
A101096RT	10.00 x 10.00 x 96.00	254 x 254 x	14
A1010116RT	10.00 x 10.00 x 116.00	254 x 254 x 2946	14
A121224RT	12.00 x 12.00 x 24.00	305 x 305 x 610	14
A121236RT	12.00 x 12.00 x 36.00	305 x 305 x 914	14
A121248RT	12.00 x 12.00 x 48.00	305 x 305 x 1219	14
A121260RT	12.00 x 12.00 x 60.00	305 x 305 x 1524	14
A121272RT	12.00 x 12.00 x 72.00	305 x 305 x 1829	14
A121284RT	12.00 x 12.00 x 84.00	305 x 305 x 2134	14
A121296RT	12.00 x 12.00 x 96.00	305 x 305 x 2438	14
A1212116RT	12.00 x 12.00 x 116.00	305 x 305 x 2946	14
A141448RT	14.00 x 14.00 x 48.00	356 x 356 x 1219	14
A141472RT	14.00 x 14.00 x 72.00	356 x 356 x 1829	14
A141484RT	14.00 x 14.00 x 84.00	356 x 356 x 2134	14
A141496RT	14.00 x 14.00 x 96.00	356 x 356 x 2438	14
A1414116RT	14.00 x 14.00 x 116.00	356 x 356 x 2946	14

## X-ON Electronics

Largest Supplier of Electrical and Electronic Components

*Click to view similar products for [Hoffman](#) manufacturer:*

Other Similar products are found below :

[A-1412CHQR](#) [A-6P4G](#) [A-202408LP](#) [CSD20168SS](#) [CSD20206](#) [CSD20208SS](#) [CSD24168](#) [CSD36248](#) [CSD36308](#) [PCU7](#) [PDS76R](#)  
[PRA197TP](#) [PT126](#) [A10086CH](#) [A1008CHNFSS](#) [A10106CH](#) [A10106CHFL](#) [A10106PHCW](#) [A1043DSC](#) [A1066JFGQRR](#) [A12106CHQRFG](#)  
[A1212SC](#) [A1412CHNFSS](#) [A161208LP](#) [A161410CH](#) [A16148CHQRFG](#) [A16H12ALP](#) [A18P16AL](#) [A24H2408SSLP](#) [A24H24BLP](#)  
[Q13138PCE](#) [A36P24](#) [Q3PBPCDM](#) [A404CH](#) [A606CHNF](#) [A606NF](#) [A806SC](#) [A845JFGR](#) [A864CHQRFGW](#) [A90P36F1](#) [HJ1412HWPL2LG](#)  
[HJ1816HWPL2LG](#) [RHJ1210HWPL2LG](#) [AS125SS](#) [ASE10X10X4](#) [ASE12X12X4](#) [E1PBG](#) [E2PBG](#) [E3PB](#) [LED24V15](#)