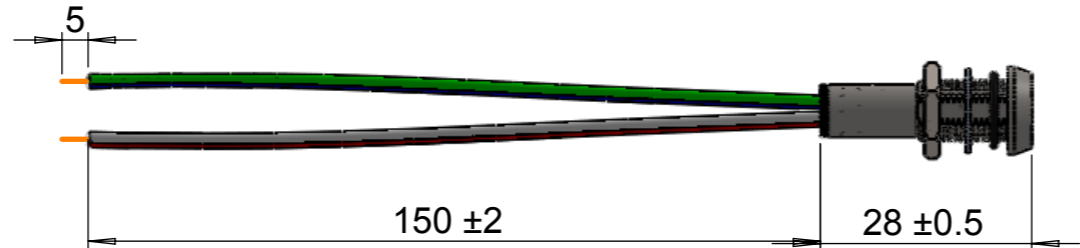


DRAWING NO SHEET MODEL NAME ISSUE
 SPL9495 1 OF 1 ASS9314 1

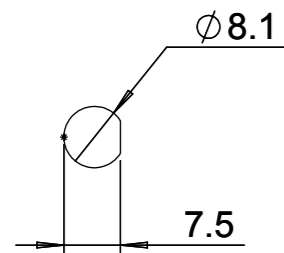
RGB PANEL LAMP

ISSUE	MODIFICATION	DRN	DATE
1	ORIGINAL ISSUE	PR	13/08/13

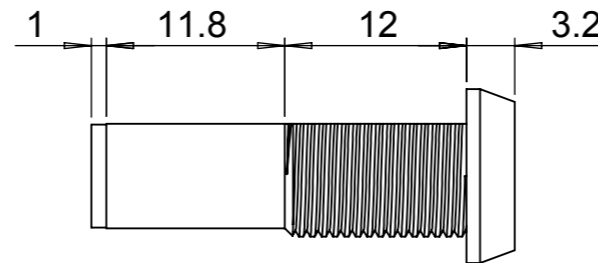
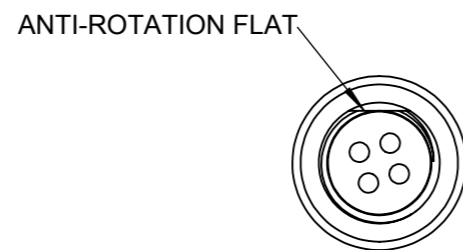
20/09/13
**NON-MAINTAINED
 COPY**



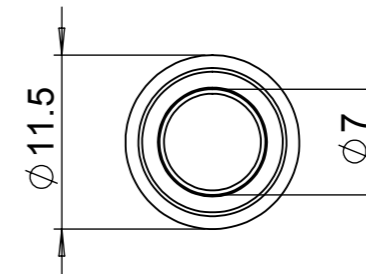
MOUNTING HOLE DETAIL:



TO BE CLEAN AND BURR FREE



SCALE 2:1



COLOURS:

WHITE.

RED, GREEN AND BLUE.

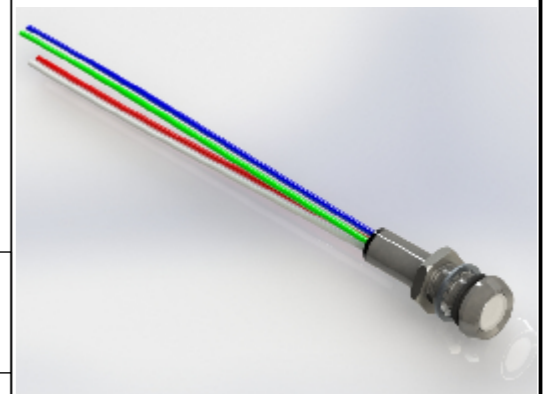
PINK, TEAL AND YELLOW.



Marl International Limited
 Marl Business Park
 Ulverston
 Cumbria
 LA12 9BN
 t: +44 (0) 1229 582430
 f: +44 (0) 1229 585155
 e: sales@marl.co.uk
 w: www.leds.co.uk

FEATURES

- SEALED TO IP67.
- SUITABLE FOR HIGH VIBRATION APPLICATIONS.
- REVERSE VOLTAGE PROTECTION
- WIDE VIEWING ANGLE.
- WHITE LENS FOR DIFFUSION OF COLOUR.
- NICKEL PLATED BRASS BODY WITH ANTI-ROTATION FLAT.



MATERIAL SPECIFICATION:

BODY: BRASS TO BS 2874 CZ121 NICKEL PLATED TO BS 1224.

NUT: BRASS TO BS 2874 CZ121 NICKEL PLATED TO BS 1224.

O-RING: NITRILE RUBBER.

WRINKLE LOCK WASHER: ZINC PLATED STEEL.

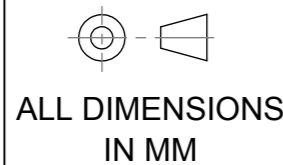
LENS: POLYCARBONATE

TERMINATION:

4 OFF 1.19mm OD DUAL WALL CONSTRUCTION, SPEC 44
 FLYING LEADS 150mm LONG

POLARITY: WHITE= +Ve, GREEN= -Ve, RED= -Ve, BLUE= -Ve.

TOLERANCE/ SCALE UOS	
LINEAR	±0.1
ANGULAR	N/A
ORIGINAL SCALE	1:1



DRN:	PR
DATE:	13/08/13
CHK1:	GWR
CHK2:	RW

PART N°	VOLATGE DC (TYP) (V)	CURRENT (mA)	POWER (TYP)(W)	OPERATING TEMP. (°C)	STORAGE TEMP. (°C)	MAX REVERSE VOLTAGE (V)	NUT MOUNTING TORQUE (NM)	LENS
525-095-21-50	12	WHITE: 43 RED: 16 BLUE: 7 GREEN: 20	WHITE: 0.53 RED: 0.2 BLUE: 0.09 GREEN: 0.24	-30~85	-40~100	100	1	DIFFUSED WHITE

X-ON Electronics

Largest Supplier of Electrical and Electronic Components

Click to view similar products for [Marl manufacturer](#):

Other Similar products are found below :

[209-997-23-38](#) [352-505-04](#) [604-325-04](#) [205-997-21-38](#) [211-997-21-38](#) [651-114-75](#) [514-114-76](#) [661-508-64-40](#) [671-066-75](#) [352-509-04](#)
[205-997-22-38](#) [524-521-21](#) [671-064-75](#) [677-930-21-19](#) [520-325-23](#) [651-114-21](#) [690-997-66](#) [508-930-22](#) [671-062-75](#) [525-095-21-50](#) [677-](#)
[501-23](#) [512-501-75](#) [520-324-23](#) [671-063-23](#) [671-066-23](#) [209-501-23-38](#) [215-532-76-38](#) [604-998-23](#) [662-303-04](#) [570-314-04](#) [354-311-04](#)
[215-532-23-38](#) [671-064-23](#) [215-521-23-38](#) [698-532-63](#) [209-930-23-38](#) [514-105-22](#) [538-501-63](#) [528-532-22](#) [514-111-75](#) [512-997-22](#) [677-](#)
[532-21-19](#) [671-291-22](#) [677-501-22](#) [573-514-04-40](#) [528-521-22](#) [671-290-22](#) [677-501-22-R](#) [215-930-23-38](#) [690-521-66](#)