

G7L-X

PCB Power Relays

Compact Power Relay Capable of Switching 1,000 VDC Loads



- Compact design that achieves high-capacity DC breaking and switching.
(52.5 × 35.5 × 41.0 mm (L×W×H))
- Two poles wired in series to break or switch 600 to 1,000 VDC.
- Complies with solar inverter safety standards (UL and EN).
- Designed for safety with 6.0-mm contact gap (two-pole series wiring).
- UL and VDE conformed.



NEW

RoHS Compliant

Model Number Legend

G7L-2A□-X-□
1 2 3 4

- | | |
|------------------------------------|--|
| 1. Number of poles
2: 2-poles | 3. Enclosure rating
Blank: Flux protection |
| 2. Contact Form
A: DPST-NO (2a) | 4. Additional Models
None: Standard model
L: General purpose model |

Application Examples

- Photovoltaic Power Systems
- PV Inverters
- Rapid Shutdown box

Ordering Information

Classification	Contact Form	Enclosure rating	Terminal Shape	Model	Rated coil voltage	Minimum packing unit
Standard model	DPST-NO*	Flux protection	PCB terminals	G7L-2A-X	12 VDC, 24 VDC	20 pcs/tray
General purpose model				G7L-2A-X-L		

Note. When ordering, add the rated coil voltage to the model number.

Example: G7L-2A-X_{DC24}

Rated coil voltage

However, the notation of the coil voltage on the product case as well as on the packing will be marked as [] VDC.

* It is assumed that the Relay will be used with 2-pole series wiring.

Ratings

● Coil

Rated Voltage	Item (V)	Rated current (mA)	Coil resistance (Ω)	Must operate voltage	Must release voltage	Max. voltage	Power consumption (W)
				% of rated voltage			
DC	12	191.7	63	75% max.	10% min.	110%	Approx. 2.3
	24	95.8	250				

Note 1. The rated current and coil resistance were measured at a coil temperature of 23°C with tolerances of ± 15%.

Note 2. The operating characteristics are measured at a coil temperature of 23°C.

Note 3. The maximum permissible voltage is the maximum value of the fluctuation range for the Relay coil operating power supply and was measured at an ambient temperature of 23°C.

● Contacts (Two-pole Series Wiring)

Item	Model	G7L-2A-X	G7L-2A-X-L
Load		Resistive load	
Contact type		Double break	
Contact material		Ag alloy	
Rated load		25 A at 600 VDC / 25 A at 1,000 VDC	20 A at 600 VDC / 20 A at 1,000 VDC
Rated carry current		25 A	20 A
Max. switching voltage		1,000 VDC	
Max. switching current		25 A	20 A

G7L-X

Characteristics

Item		G7L-2A-X	G7L-2A-X-L
Contact resistance *1		100 mΩ max.	
Operate time *2		30 ms max.	
Release time *2		30 ms max.	
Insulation resistance *3		1,000 MΩ min.	
Dielectric strength	Between coil and contacts	4,000 VAC, 50/60 Hz for 1 min	
	Between contacts of the same polarity	2,000 VAC, 50/60 Hz for 1 min	
	Between contacts of different polarity	2,000 VAC, 50/60 Hz for 1 min	
Impulse withstand voltage *4	Between coil and contacts	10 kV	
Vibration resistance	Destruction	10 to 55 to 10 Hz, 0.75 mm single amplitude (1.5 mm double amplitude)	
	Malfunction	10 to 55 to 10 Hz, 0.75 mm single amplitude (1.5 mm double amplitude)	
Shock resistance	Destruction	1,000 m/s ²	
	Malfunction	100 m/s ²	
Durability	Mechanical *5	1,000,000 operations min. (at 1,800 operations/h)	
	Electrical (Resistive load) *6	100 operations (25 A, 1,000 VDC, 85°C) 6,000 operations (25 A, 600 VDC, 85°C) (at 360 operations/h under resistive load, ON for 1 s and OFF for 9 s)	100 operations (20 A, 1,000 VDC, 85°C) 6,000 operations (20 A, 600 VDC, 85°C) (at 360 operations/h under rated load, ON for 1 s and OFF for 9 s)
Ambient operating temperature		-40° to 85°C (with no icing or condensation)	
Ambient operating humidity		5% to 85%	
Failure rate (P level) (reference value) *7		100 mA at 5 VDC (at 60 operations/min)	
Weight		Approx. 100 g	

Note. The values given above are initial values.

*1. Measurement conditions: 5 VDC, 1 A, voltage drop method.

*2. Measurement conditions: Rated operating voltage applied, not including contact bounce.
Ambient temperature: 23°C

*3. Measurement conditions: The insulation resistance was measured with a 1,000-VDC megohmmeter at the same locations as the dielectric strength was measured.

*4. JEC-212 (1981) Standard Impulse Wave Type (1.2x50μs).

*5. A standard diode and zener diode are connected to the relay coil.

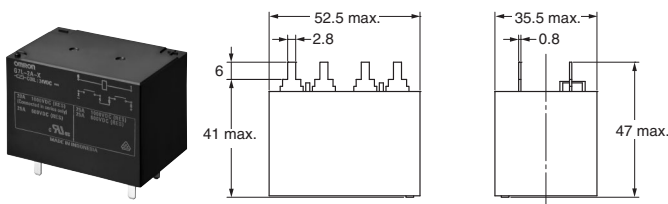
*6. For two-pole series wiring. Also, a standard diode and zener diode are connected to the relay coil.

*7. A standard diode and zener diode are connected to the relay coil.

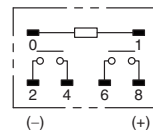
Dimensions

(Unit: mm)

G7L-2A-X G7L-2A-X-L

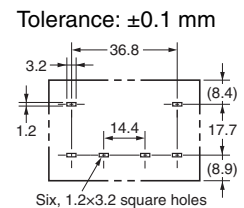


Terminal Arrangement/Internal Connections (BOTTOM VIEW)

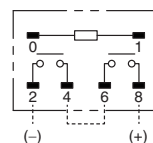


Contacts are Polarized. Perform wiring with care. The coil has no polarity.

PCB Mounting Holes (BOTTOM VIEW)



Two-pole Series Wiring Diagram (BOTTOM VIEW)

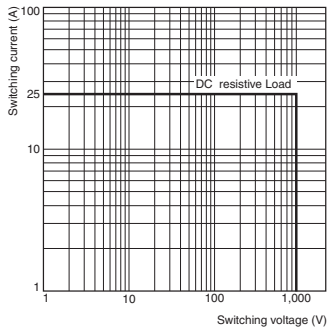


Wire the two poles in a series connection to use the Relay.

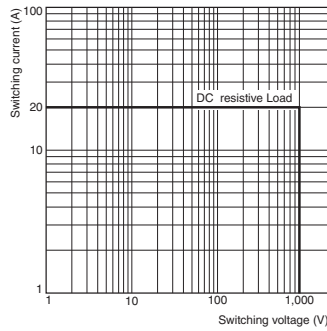
Engineering Data (Two-pole Series Wiring)

● Maximum Switching Capacity

G7L-2A-X



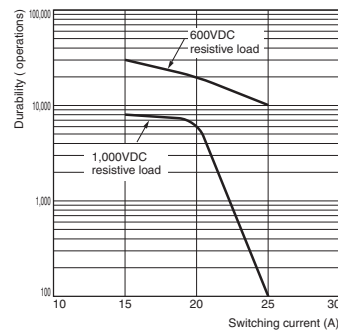
G7L-2A-X-L



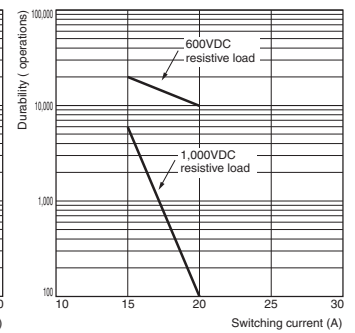
● Durability

Note: Ambient temperature: 85°C

G7L-2A-X



G7L-2A-X-L



Approved Standards

- The approval rating values for overseas standards are different from the performance values determined individually confirm the values before use.

UL Recognized  (File No. E41515)

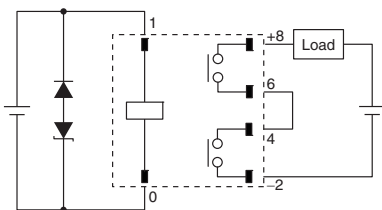
Model	Coil ratings	Contact ratings	Number of test operations
G7L-2A-X	12 VDC, 24 VDC	15 A at 1000 VDC (Resistive) 85°C, Connected in series or Break all lines	6,000
		20 A at 1000 VDC (Resistive) 85°C, Connected in series	
		25 A at 600 VDC (Resistive) 85°C, Connected in series or Break all lines	
G7L-2A-X-L	12 VDC, 24 VDC	15 A at 1000 VDC (Resistive) 85°C, Connected in series or Break all lines	6,000
		20 A at 1000 VDC (Resistive) 85°C, Connected in series	
		20 A at 600 VDC (Resistive) 85°C, Connected in series or Break all lines	

● EN/IEC and VDE Approval  (Approval No.40045061)

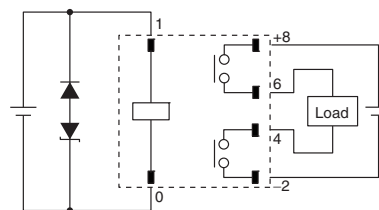
Model	Coil ratings	Contact ratings	Number of test operations
G7L-2A-X	12 VDC, 24 VDC	25 A at 1000 VDC (Resistive) 85°C, Connected in series or Break all lines	50
		15 A at 1000 VDC (Resistive) 85°C, Connected in series or Break all lines	8,000
		25 A at 600 VDC (Resistive) 85°C, Connected in series or Break all lines	10,000
G7L-2A-X-L	12 VDC, 24 VDC	20 A at 1000 VDC (Resistive) 85°C, Connected in series or Break all lines	50
		15 A at 1000 VDC (Resistive) 85°C, Connected in series or Break all lines	6,000
		20 A at 600 VDC (Resistive) 85°C, Connected in series or Break all lines	10,000

● Circuit Diagrams

Connected in series



Break all lines



Note. There is polarity. Perform wiring with care.
The diode absorbs coil surge. (The coil has no polarity.)

Safety Precautions

- Please refer to "PCB Relays Common Precautions" for correct use.

Correct Use

●Installation

- The relay contacts are polarized. Incorrect wiring may cause a failure to break the circuit. Wire the Relay with care.
- The Relay is designed and manufactured under the assumption that it will be used with 2-pole series wiring. Do not use just one pole only.
- Install the Relays in locations that are as dry as possible and have as little dust, dirt, and harmful gas.
- Using the Relay under high temperature, high humidity, or harmful gas may deteriorate its performance characteristics due to condensation or corrosive materials, resulting in failure or burn damage to the Relay.
- The Relay weighs approx. 100 g. Be sure that the PCB is strong enough to support it.
We recommend dual-side through-hole PCBs to reduce solder cracking from heat stress.

●Micro Loads

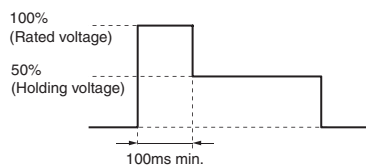
- These Power Relays are suitable for switching and breaking high-capacity DC. Do not use them for switching minute loads, such as signals.

●Soldering PCB Terminals

- Do not perform automatic soldering. Always solder the terminals manually.
- The G7L-X is not sealed. Do not wash the G7L-X with water or detergent.

●Coil Voltage Reduction (Holding Voltage) after Relay Operation

- If the coil voltage is reduced to the holding voltage after Relay operation, first apply the rated voltage to the coil for at least 100 ms, as shown below.
- A voltage of at least 50% of the rated voltage is required for the coil holding voltage. Do not allow voltage fluctuations to cause the coil holding voltage to fall below this level.



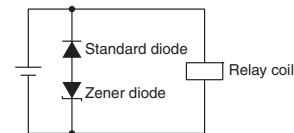
	Applied coil voltage	Coil resistance*	Power consumption
Rated voltage	100%	63Ω(DC12)	Approx. 2.3W
Holding voltage	50%	250Ω(DC24)	Approx. 0.6W

* The coil resistance were measured at a coil temperature of 23°C with tolerances of ± 15%.

• Application examples provided in this document are for reference only. In actual applications, confirm equipment functions and safety before using the product.
• Consult your OMRON representative before using the product under conditions which are not described in the manual or applying the product to nuclear control systems, railroad systems, aviation systems, vehicles, combustion systems, medical equipment, amusement machines, safety equipment, and other systems or equipment that may have a serious influence on lives and property if used improperly. Make sure that the ratings and performance characteristics of the product provide a margin of safety for the system or equipment, and be sure to provide the system or equipment with double safety mechanisms.

●Connection of Diodes to the Operation Coil

- Connect the standard diode and zener diode (or varistors) to the relay coil. (Refer to the following figure.)
The coil has no polarity. Connect the diodes in the reverse polarity of the voltage applied to the coil.
The recommended zener voltage of the zener diode is one to two times the rated coil voltage.



●PCB Mounting Interval

- When mounting Relays side by side on a PCB, use them at a holding voltage of 50%.

●Relay Service Life

- These Relays must be used for high DC voltages. The final failure mode is failure to break the circuit. In a worst-case scenario, burning may extend to surrounding components. Do not use these Relays outside of the specified ratings and service life, or for any application other than high DC voltages. Implement safety circuits and other safety measures to minimize the risk in case of the unlikely event of a failure.
- The electrical durability of these Relays is specified as the number of load switching operations under a resistive load and OMRON-specified standard testing conditions.
The coil drive circuit, ambient environment, switching frequency, or load conditions (e.g., inductive load or capacitor load) may reduce the service life and possibly lead to failure to break. Always confirm the service life in the actual equipment.

Note: Do not use this document to operate the Unit.

X-ON Electronics

Largest Supplier of Electrical and Electronic Components

Click to view similar products for [Omron](#) manufacturer:

Other Similar products are found below :

[E3X-DA41-S](#) [E3X-SD11 2M](#) [S82Y-VM30D](#) [E3ZM-LS81H 2M](#) [WLCL-TS](#) [XS2FM12PVC4A2MLED](#) [XW2Z-300B](#) [F309VM](#) [G9EB-1-B](#)
[DC48](#) [NT2S-SF123B-EV2](#) [CJ2M-CPU32.1](#) [E2E-X5ME2](#) [E2J-JC4A](#) [E2E2-X5Y2-US](#) [NT21-ST121-E](#) [G9EA-1 DC60](#)
[K8AKTH11SAC100240](#) [E2K-L13MC1](#) [E3ZM-R66](#) [G5LE-1-CF](#) [DC5](#) [XS2M-D824-4](#) [E2EC-C2R5C1](#) [E3C-LS3R](#) [E5AC-CX4A5M-000](#)
[G6A234PST40USDC5](#) [A-20G-B7-K](#) [G2RL1ECFDC48](#) [A6E0101](#) [G5SB-1 DC5](#) [E2EM-X8X1 2M](#) [G3VM-S3](#) [F39-LGF](#) [A22-GG-10M](#)
[G3VM-101LR](#) [B3D4112](#) [G8N-1H DC12 SK](#) [LY1D-2-5S-AC120](#) [LY1FAC100110](#) [M165-JR-24D](#) [CS1G-CPU43-E](#) [CS1WBC033](#)
[CS1WCT041](#) [M22CAT1](#) [61FG3AC110220](#) [61F-GP-NT AC110](#) [M7E-01DGN2-B](#) [M7E-02DGN2](#) [M7E-08DRN2](#) [M7E-20DRN1](#) [M7E-](#)
[HRN2](#)