

Dear Customer,

With this INFINEON Technologies Information Note we would like to inform you about the following

Optimized power terminals for all High Power modules A-series with AISiC base plate

N° 083/16

Optimized power terminals for all High Power modules A-series with AISiC base plate

► **Products affected:**

All IHM and IHV modules with AISiC base plate
Please refer to attached affected product list

► **Detailed Change Information:**

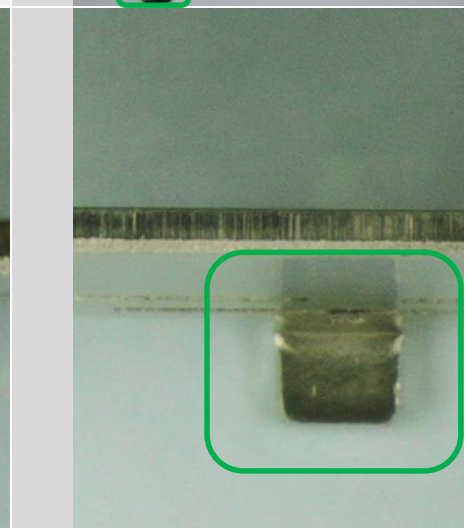
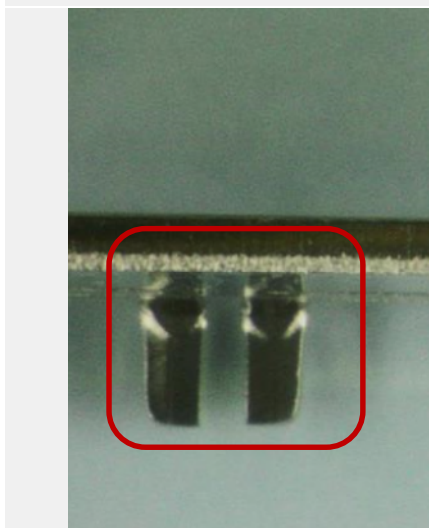
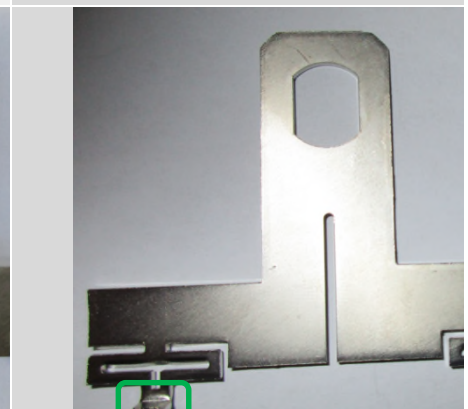
Subject: Change of the main terminals from opened feet to closed feet
Both terminals Collector and Emitter will be changed

Reason: Optimisation of production processes

Description: Old



New



N° 083/16

- ▶ **Product Identification:** Product Date Code
The exact date of implementation can be provided on request
- ▶ **Impact of Change:** The above mentioned change will have no impact on the mechanical, electrical and thermal parameters of the modules, according to JEDEC standard JESD46-C: fit, form, function and reliability
- ▶ **Attachments:** Affected product list 1_cip083_16.xlsx
- ▶ **Intended start of delivery:** From December 2016 onwards. During the ramp up power terminals of both types may be delivered.

If you have any questions, please do not hesitate to contact your local Sales office.

X-ON Electronics

Largest Supplier of Electrical and Electronic Components

Click to view similar products for [Infineon](#) manufacturer:

Other Similar products are found below :

[BSM50GB60DLC](#) [FF600R17KF6C_B2](#) [DD260N12KHPSA1](#) [8500808-9](#) [DATA-94-5231](#) [FD401R17KF6C_B2](#) [FF401R17KF6C_B2](#)
[FF150R12MS4GBOSA1](#) [SPW21N50C3](#) [IRFS31N20D](#) [XMC1100T038X0064AAXUMA1](#) [BUZ30AHXKSA1](#) [FZ400R17KE3HOSA1](#)
[IRF2807](#) [SPA07N60CFD](#) [SPP04N50C3XKSA1](#) [IRL2910](#) [IRFS52N15DHR](#) [BGA231N7E6327XTSA2](#) [IRGP20B60PD](#) [TDA21310XUSA1](#)
[IRF7832](#) [IRF7422D2](#) [IRF7301](#) [IRFR3518](#) [TLE4296G V30](#) [IRFZ24N](#) [IDD05SG60C](#) [IRFP260N](#) [IRF7316](#) [IFX25001TCV10ATMA1](#)
[IRFR3704](#) [IRLIZ44N](#) [BTT6030-2EKA](#) [BSP299 H6327](#) [IFX2931GV33XUMA1](#) [XMC1301T016X0016AAXUMA1](#) [IPU60R2K0C6BKMA1](#)
[IPP80N06S4L-07](#) [BSR302N L6327](#) [IPU60R1K4C6](#) [IRF7805](#) [IRLR8103V](#) [BSL802SNH6327XTSA1](#) [IRFR3910](#) [IRFS59N10D](#)
[IRFS59N10DTRR](#) [EVALM113023645ATOBO1](#) [EVALM11302TOBO1](#) [FD1000R33HE3-K](#)