



## Product Data Sheet

# MFH8xx5FF

Replace "xx" with 06 or 15 for 600/1500 Volts  
Add "CH" to have covers included

Fuse Holder, Modular Bolt-down

## 800 Amps 600/1500 Volts AC/DC

For use with 200 - 800 Amp Fuses

### Wire Range

- For use with Listed lugs or flexible bus bar

### Electrical Ratings

- Up to 800A, 1500V AC/DC (see Catalog Number Information table)
- SC withstand 200kA (600V), 10kA (1500V)
- Factory & field wiring

### Agency Compliance

- UL Recognized fuse holder, evaluated to UL 4248-1, file no. IZLT2.E35113
- cURus - investigated to CSA C22.2 No 4248.1-07

### Material Information

- Insulator base:
  - Thermoplastic
  - Flammability rating of insulator base UL94 V-0
  - Insulator base temperature rating: -40°C to 125°C (UL RTI)
- Connector - Al, tin plated
- Bolt - grade 5 Steel, zinc plated
- Flat washer - Steel, zinc plated
- Bellville washer - Steel, zinc plated
- RoHS compliant

A Regal Brand

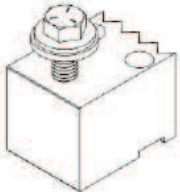
**REGAL**

### Catalog Number Information

Catalog #	Voltage Rating	Suitable Fuse Types	Amperage Rating	Withstand Rating kA	Fuse, Line, Load Terminal Stud Size
MFH8065FF	600V	Class J	401 - 600A	200kA	1/2" Stud
		Class T	601 - 800A		
		Specialty/Semi-Conductor/High-Speed	800A Max	Note 1	
MFH8155FF	1500V	Specialty/Semi-Conductor/High-Speed	800A Max	10kA	

- Add "CH" behind above part numbers for covers installed
- Note 1: To be evaluated in the end use application. Tested Let-Through Values  $I_p (A) = 75kA$ ,  $I^2t (A^2s) = 4,000kA$

### Termination Specifications

Line/Load Side	Termination Type	Torque (Lug)	Torque (Flexible bus bar*)	Maximum Lug Width
	Listed lugs or flexible bus bar on 1/2" fasteners	56.5 N·m (500 lbf·in)	56.5 N·m (500 lbf·in)	50.8 mm (2.00")

- For use with conductors prepared with listed connectors such as single hole compression/crimp lugs.
- Conductor size, ampacity, temperature rating and type are dictated by the ratings of the listed lugs utilized and applicable code requirements.
- Suitability for use with rigid bus bar or other conductors or wire connectors to be determined in the end-use application.

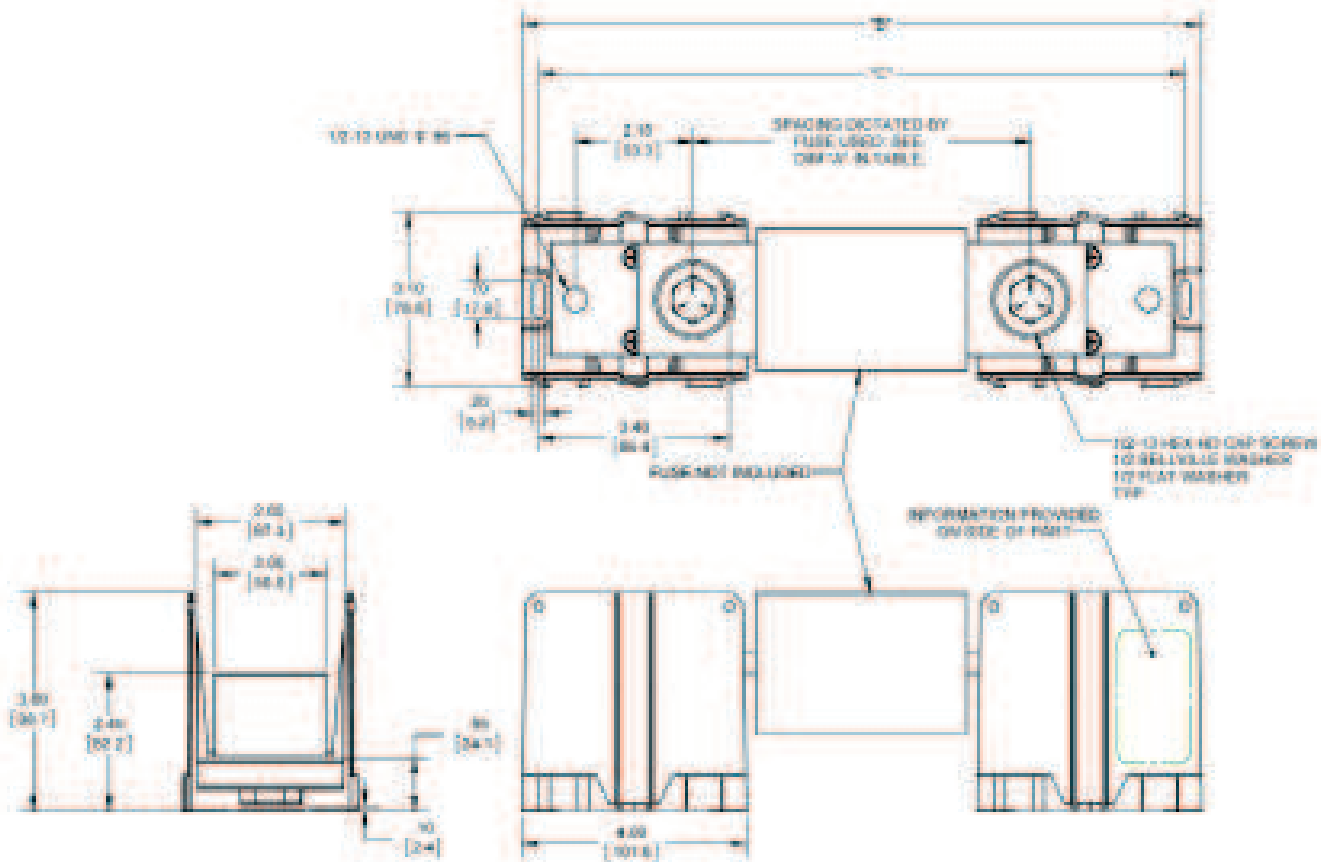
\* Tested with Erico Flexibar 10 x 50 x 1

### Installation & Accessories

- Mounting:
  - # 10 fastener. Torque to 25 - 30 lbf-in.
- Cover : Clear thermoplastic - CH MFH8

**Drawing & Reference Fuse Data**

Not limited to fuses below. Fuse can be evaluated in end use



Fuse Information				Dimensional Information		
Fuse Class	Voltage Rating	Amperage Rating	Catalog #	"A" Mounting Distance	"B" Overall Length	"C" Mtg. Hole Distance
FWH	500	700 - 800	MFH8065xx	4.21"	10.31"	9.71"
J	600	450 - 600	MFH8065xx	6.00"	12.10"	11.50"
TJS	600	601 - 800	MFH8065xx	3.17"	9.27"	8.67"
TJN	300	601 - 800	MFH8065xx	2.22"	8.32"	7.72"
A50AQS	500	700 - 800	MFH8065xx	4.22"	10.32"	9.72"
FWP	700	700 - 800	MFH8155xx	5.31"	11.412"	10.812"
FWP	700	450 - 600	MFH8155xx	4.96"	11.055"	10.455"
A70QS	700	450 - 600	MFH8155xx	4.85"	10.95"	10.35"
A70QS	700	700 - 800	MFH8155xx	5.10"	11.20"	10.60"
A100P	1000	500 - 600	MFH8155xx	5.72"	11.82"	11.22"
A150X	1500	400 - 600	MFH8155xx	8.19"	14.29"	13.69"

## X-ON Electronics

Largest Supplier of Electrical and Electronic Components

*Click to view similar products for [Marathon manufacturer](#):*

Other Similar products are found below :

[104](#) [600AGP04PSB](#) [599GP200402PSB](#) [670A GP 03](#) [601RJ 06](#) [985GP02](#) [599-GP-2004-10](#) [600-2004-3-SP](#) [600-GP-20](#) [600TS-10](#) [601-GP-2102-02](#) [601-GP-3/4ST-12](#) [601-GPYSY-03](#) [602-GPYSY-22](#) [603-2302-04](#) [603-JJ-04](#) [603-JJ-07](#) [604-JJ-06](#) [605-GP-03SLB](#) [605-JJ-02](#) [651-XPR-13](#) [670-3/4ST-9](#) [670A-GP-3000-18](#) [670A-GP-3000-25](#) [670A-GP-3000-27](#) [670A-GP-3/4ST-10](#) [CW205-01C](#) [671-RZ-25](#) [672-GPY-05](#) [699-GP-2102-08](#) [6F30A3S](#) [6H38-TSKK-C](#) [6R30A3SP](#) [F600A1B](#) [F600A3B](#) [F60A1B](#) [799-6-KT28](#) [799-7-KT28](#) [FPB33588](#) [R30A1B](#) [RF400A3B](#) [1321970](#) [1322970CH](#) [1320972](#) [1331955](#) [1332270](#) [1332360](#) [1332554CH](#) [1333280CH](#) [1333575CH](#)