

# INTERCONNECTION

PCB  
TERMINAL  
BLOCKS

INTER-  
CONNECTION

FUSES &  
FUSE-  
HOLDERS

LEDS &  
INDICATORS

MINIATURE  
SWITCHES

LIMIT &  
SAFETY  
SWITCHES

CONTROL  
PRODUCTS

INTERFACE  
MODULES &  
SUPPORTS

RELAY  
BASES

DIN RAIL  
ENCLOSURES

BATTERIES

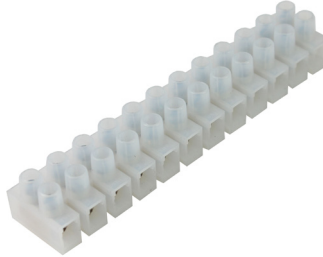
SOLAR  
PANELS

TRANS-  
FORMERS

## 12 Way Nylon Terminal Strips

- Moulded from Natural PA6 (standard, CTSN400), Cream PA66 (CTSN500), Grey PA66 Glass fibre (CTSN600)
- Available with or without wire protection
- UL94-V2 Self extinguishing as standard
- V0 types pass 960°C glow-wire test
- Middle barrier option available
- Printing available on request
- Easily cut to size
- Supplied cut to length on request
- Closed inserts (middle barrier) option
- Captive terminal screws
- CE, RoHS, REACH & UL approvals

CTSN



### SPECIFICATION

Voltage	CTSN431-433	450VAC
	CTSN434-438	750VAC (UL600VAC)
Working temperature	CTSN400	-30°C to +110°C
	CTSN500	-30°C to +110°C
	CTSN600	-5°C to +160°C
Moulding	CTSN400	UL94-V2 PA6
	CTSN500	UL94-V0 PA66
	CTSN600	UL94-V0 PA66 + GF
Standard insert	Nickel-plated brass	
Terminal screws	Zinc-plated steel CQ-15	
Wire protectors	Stainless steel	

Part Numbers shown are for standard PA6 material (e.g. CTSN433/12)

For CTSN500 PA66 material change first number to 5 (e.g. CTSN533/12)

For CTSN600 PA66+GF material change first number to 6 (e.g. CTSN633/12)

### Standard Type

TYPE NO.	PITCH / UL RATING	WIRE PROTECTION	INSERT DIAMETER	CABLE ACCEPTANCE	TERMINAL SCREWS	LENGTH	WIDTH	HEIGHT	PITCH	FIXING HOLE DIAMETER	MAX CURRENT
CTSN431/12W	8mm/20A	No	3.2mm	4.0mm <sup>2</sup> /12AWG	M3	94mm	18mm	15mm	8mm	2.8mm	32A
CTSN431/12	8mm/15A	Yes	3.2mm	2.5mm <sup>2</sup> /14AWG	M3	94mm	18mm	15mm	8mm	2.8mm	32A
CTSN433/12W	10mm/30A	No	3.5mm	6.0mm <sup>2</sup> /10AWG	M3	116mm	21mm	16mm	10mm	2.8mm	41A
CTSN433/12	10mm/20A	Yes	3.5mm	4.0mm <sup>2</sup> /12AWG	M3	116mm	21mm	16mm	10mm	2.8mm	41A
CTSN434/12W	12mm/50A	No	4.4mm	10.0mm <sup>2</sup> /8AWG	M3.5	140mm	23mm	18mm	12mm	2.8mm	57A
CTSN434/12	12mm/30A	Yes	4.4mm	6.0mm <sup>2</sup> /10AWG	M3.5	140mm	23mm	18mm	12mm	2.8mm	57A
CTSN435/12W	13.5mm/65A	No	6.0mm	16.0mm <sup>2</sup> /6AWG	M4	159mm	26mm	22.5mm	13.5mm	3.6mm	76A
CTSN435/12	13.5mm/65A	Yes	6.0mm	10.0mm <sup>2</sup> /8AWG	M4	159mm	26mm	22.5mm	13.5mm	3.6mm	76A
CTSN438/12W	18mm/85A	No	7.5mm	3.5mm <sup>2</sup> /2AWG	M5	177mm	31mm	27.5mm	15mm	3.4mm	101A

### Raised Base

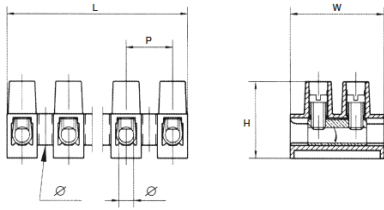
TYPE NO.	PITCH / UL RATING	WIRE PROTECTION	INSERT DIAMETER	CABLE ACCEPTANCE	TERMINAL SCREWS	LENGTH	WIDTH	HEIGHT	PITCH	FIXING HOLE DIAMETER	MAX CURRENT
CTSN431/12WR	8mm/20A	No	3.2mm	4.0mm <sup>2</sup> /12AWG	M3	94mm	18mm	17mm	8mm	2.8mm	32A
CTSN431/12R	8mm/20A	Yes	3.2mm	2.5mm <sup>2</sup> /14AWG	M3	94mm	18mm	17mm	8mm	2.8mm	32A
CTSN433/12WR	10mm/30A	No	3.5mm	6.0mm <sup>2</sup> /10AWG	M3	116mm	21mm	17.5mm	10mm	2.8mm	41A
CTSN433/12R	10mm/30A	Yes	3.5mm	4.0mm <sup>2</sup> /12AWG	M3	116mm	21mm	17.5mm	10mm	2.8mm	41A
CTSN434/12WR	12mm/50A	No	4.4mm	10.0mm <sup>2</sup> /8AWG	M3.5	140mm	23mm	20mm	12mm	2.8mm	57A
CTSN434/12R	12mm/50A	Yes	4.4mm	6.0mm <sup>2</sup> /10AWG	M3.5	140mm	23mm	20mm	12mm	2.8mm	57A
CTSN435/12WR	13.5mm/65A	No	6.0mm	16.0mm <sup>2</sup> /6AWG	M4	159mm	26mm	26mm	13.5mm	3.6mm	76A
CTSN435/12R	13.5mm/65A	Yes	6.0mm	10.0mm <sup>2</sup> /8AWG	M4	159mm	26mm	26mm	13.5mm	3.6mm	76A

### Alternative Options

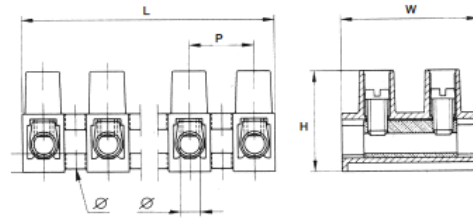
TYPE NO.	PITCH / UL RATING	WIRE PROTECTION	INSERT DIAMETER	CABLE ACCEPTANCE	TERMINAL SCREWS	LENGTH	WIDTH	HEIGHT	PITCH	FIXING HOLE DIAMETER	MAX CURRENT
CTSN433/12WL	10mm/30A	No	3.5mm	6.0mm <sup>2</sup> /10AWG	M3	116mm	31mm	16.8mm	10mm	2.8mm	41A
CTSN433/12L	10mm/30A	Yes	3.5mm	4.0mm <sup>2</sup> /12AWG	M3	116mm	31mm	16.8mm	10mm	2.8mm	41A
CTSN433/12WLC	10mm/30A	No	3.5mm	6.0mm <sup>2</sup> /10AWG	M3	116mm	31mm	21.5mm	10mm	2.8mm	41A
CTSN433/12LCL	10mm/30A	Yes	3.5mm	4.0mm <sup>2</sup> /12AWG	M3	116mm	21mm	17.6mm	9.95mm	3.6mm	41A
CTSN433/12WS	10mm/30A	No	3.5mm	6.0mm <sup>2</sup> /10AWG	M3	116mm	21mm	17.3mm	10mm pin	3.5mm	41A
CTSN433/12S	10mm/30A	Yes	3.5mm	4.0mm <sup>2</sup> /12AWG	M3	116mm	21mm	17.3mm	10mm pin	3.5mm	41A
CTSN433/12WQ	10mm/30A	No	3.5mm	6.0mm <sup>2</sup> /10AWG	M3	116mm	21mm	18.1mm	9.95mm	2.8mm	41A
CTSN433/12Q	10mm/30A	Yes	3.5mm	4.0mm <sup>2</sup> /12AWG	M3	116mm	21mm	18.1mm	9.95mm	2.8mm	41A

# INTERCONNECTION

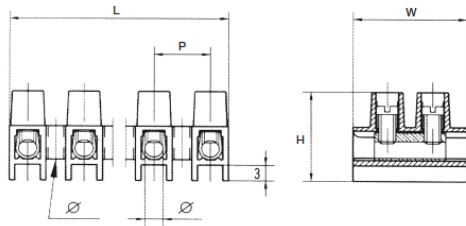
Standard type, no wire protection



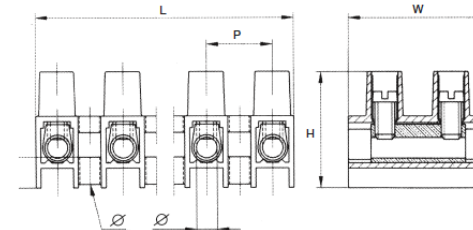
CTSN433/12T fast fixing hole between poles



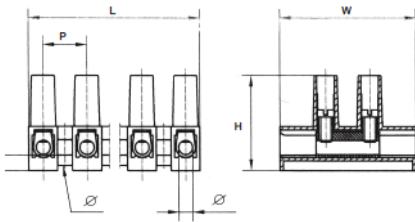
Raised base types - provides increased isolation



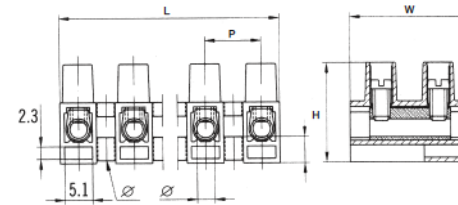
CTSN433/12TR fast fixing hole between poles and raised base



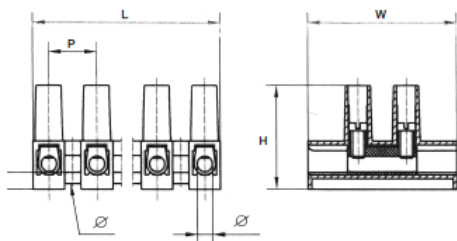
CTSN433/12LC larger isolating surface per pole and screw tower. Complies with EN60598/1 4.7 and 11.2



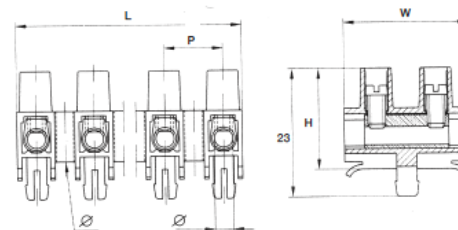
CTSN433/12TRG fast fixing hole between poles, raised base and socket in the base



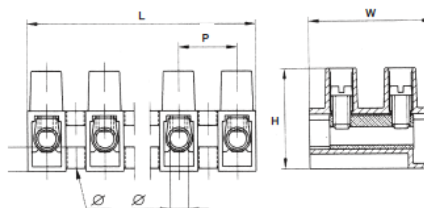
CTSN433/12L larger isolating surface per pole (750V, test voltage 3,000V) Complies with EN60598/1 4.7 and 11.2



CTSN433/12S fixing pin



CTSN433/12Q fixing hole between poles and wide base terminal connection



PCB  
TERMINAL  
BLOCKS

INTER-  
CONNECTION

FUSES &  
FUSE-  
HOLDERS

LEDs &  
INDICATORS

MINIATURE  
SWITCHES

LIMIT &  
SAFETY  
SWITCHES

CONTROL  
PRODUCTS

INTERFACE  
MODULES &  
SUPPORTS

RELAY  
BASES

DIN RAIL  
ENCLOSURES

BATTERIES

SOLAR  
PANELS

TRANS-  
FORMERS

## X-ON Electronics

Largest Supplier of Electrical and Electronic Components

*Click to view similar products for [Camden manufacturer](#):*

Other Similar products are found below :

[CCTTR30RD](#) [412689X](#) [CTBP92VE/12R](#) [CTBP9350/12](#) [IND515205-240-T/GRN](#) [IND515205-240-T/RD](#) [CDIC00002](#) [CCTTBES](#)  
[C192SHAND](#) [RX510A](#) [RTM5006/16-PAT](#) [CTB9350/12FL](#) [CTBP9308/6AO](#) [CTBP9358/11](#) [CTBP9208/8](#) [CIME/M/BE2250SS](#)  
[CHH64E1BL](#) [CHD774004](#) [CHHBAT1BK](#) [CFTBN/2](#) [RTM5003/13-NAT](#) [CCB2S1/04](#) [CCM1S1/05](#) [CHDX7-224C](#) [CHDX8-221](#) [CHDX8-222](#) [CHDX8-231C](#) [CHDX810DD](#) [CHDX811DD](#) [CHDX814DD](#) [CTB9300/2A](#) [CTBP92VD/5R](#) [CTBP92VJ/8R](#) [CTSN431/12/M](#)  
[CTSN433/12/M](#) [CUABOX012](#) [CDIC00005](#) [CBRPH-BLK](#) [BIM2004/LUG-GY/GY](#) [RTM5005/15-WH](#) [RTM108-BLK](#) [CNMB/4/KIT](#)  
[CTB5050/5](#) [CTBP9358/10AO](#) [CTBP93VE/9](#) [CHH66C2GY](#) [CIM/9W-DMFS](#) [RTM5006/16-NC-BLK](#) [IND5032405-125-T/AMB](#) [CHTB4/3N](#)