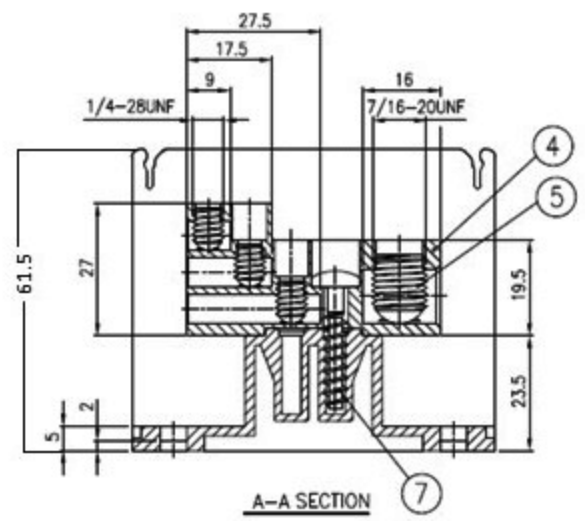
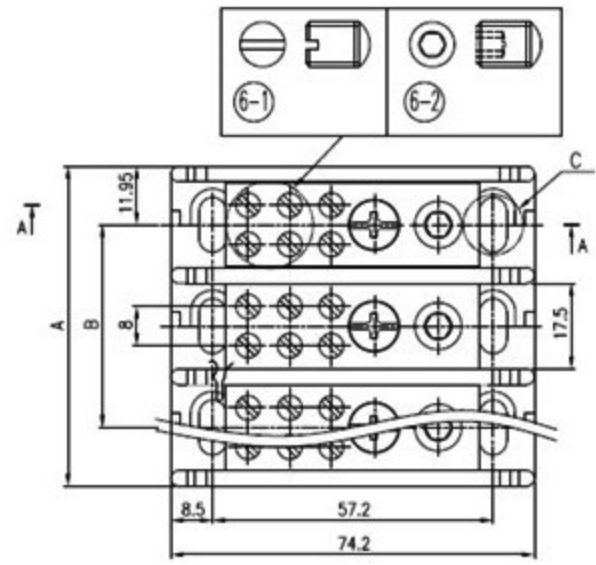
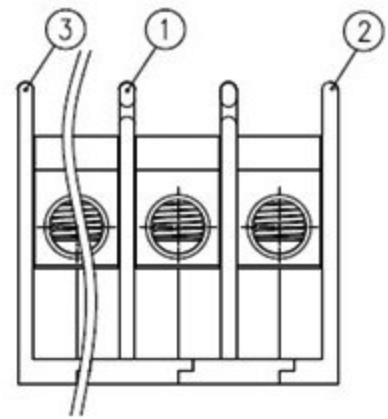
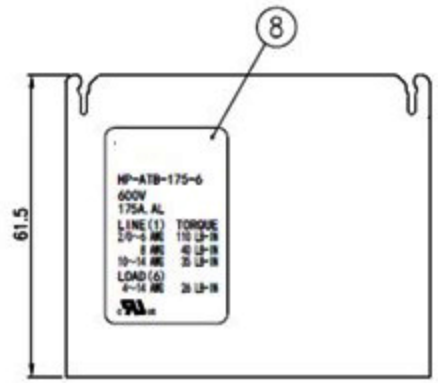


Dimensional tolerance									
Dimension	Linear dimension					Roundness and chamfer Angle			
	With 1/2	Over 1/2	Over 1/2 to 1	Over 1 to 2	Over 2 to 50	With 1/3	Over 1/3	Over 1/2	Over 1
Tolerance	±0.2	±0.3	±0.5	±0.8	±1.2	±0.4	±1	±2	±3



SPECIFICATIONS	
VOLTAGE RATINGS:	600V
CURRENT RATINGS:	175A
CONDUCTORS:	ALUMINUM
MATERIALS:	PBT UL94V-0
SUITABLE WIRE:	
LINE:	2/0~14 AWG CU
LOAD:	4~14 AWG CU
WIRING TORQUE:	
LINE:	
2/0~6 AWG	110 LB-IN
8 AWG	40 LB-IN
10 14 AWG	35 LB-IN
LOAD:	
4~14 AWG	26 LB-IN
CERTIFICATION MARKING:	UL CUL



LINE NO	P	1P	2P	3P	4P
SPACING A		23.9	44.6	65.3	86
SPACING B			20.7	41.4	62.1

No.	PART No.	BOM							
1	HP-ATB-175-6-_P-L1	1	2	3	4	5	6	7	8

8	LABEL	PAPER ; 40X25	1		LA2000-36	
7	SCREW	SS ; 5x2.24Px25L	P	Sn PLATED	SC304Y	
6-2	SCREW	SS ; 1/4-28UNF	6P	Sn PLATED	SC308-1Y	HEX 1/8
6-1	SCREW	SS ; 1/4-28UNF	6P	Sn PLATED	SC308Y	SLOT
5-2	SCREW	SS ; 7/16-20UNF	P	Sn PLATED	SC392-2Y	HEX 5
5-1	SCREW	ALUMINUM ; 7/16-20UNF	P	Sn PLATED	SC303	HEX 3/16
4	CONDUCTORS	ALUMINUM	P	Sn PLATED	ALB-6	
3	SIDE PLATE	PBT ; UL94V-0	1		ASAB-175L	BLACK
2	SIDE PLATE	PBT ; UL94V-0	1		ASAB-175R	BLACK
1	BASE	PBT ; UL94V-0	P-1		ABAB-175	BLACK

No.	DATE	CONTENT	REVISION	APPROVED	NO.	PART NAME	MATERIAL	Q'TY	FINISH	PART NO.	REMARK
SCALE	1/1	DIM.	mm		DRAWN BY	CHECKED BY	APPROVED BY	TITLE	TERMINAL BLOCK		
	L.F.	L.W.S.	L.W.S.								
	16.08.24	16.08.24	16.08.24					DWG NO.	HP-ATB-175-6-_P (H0)		

BlockMaster Electronics

## **X-ON Electronics**

Largest Supplier of Electrical and Electronic Components

*Click to view similar products for [Blockmaster](#) manufacturer:*

Other Similar products are found below :

[OTB-388-03P-C](#) [OTB-359N-02P-C](#) [OT-016-M5-L8](#) [HP-ATB-175-5-3P](#) [OTB-358N-06P-C](#) [HP-ATB-175-4-3P](#) [HP-AT-101-1-2P](#) [OTB-351-03P-C](#) [OTB-388-04P-C](#) [OP-487-M6](#) [HP-AT-101-1-3P](#) [HB951-23P](#) [OTB-351-12P-C](#) [OTB-330N-03P-C](#) [OTB-351-05P-C](#) [OTB-388-02P-C](#) [OP-055-M5-L1](#) [OT-201-M8](#) [OP-075-M5](#) [OT-047-M4](#) [675-303/920](#) [OT-048-M5](#) [PSM020H5](#) [MSB03005](#) [KS-03](#) [HI-205-07PH-C](#) [675-102/0](#)  
[675-302/0](#)