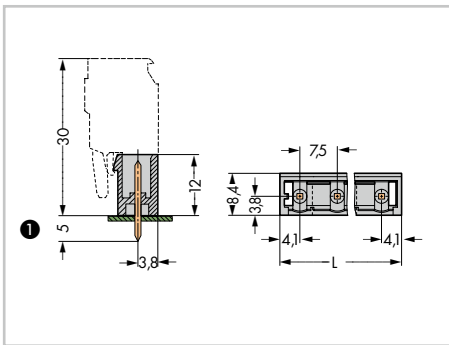
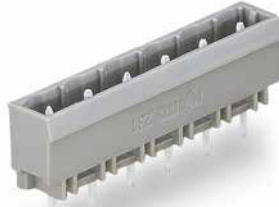
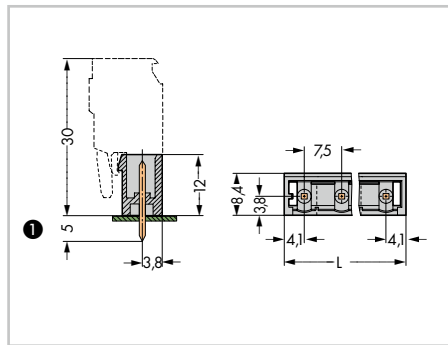


Male Headers with Solder Pins MCS MIDI Classic

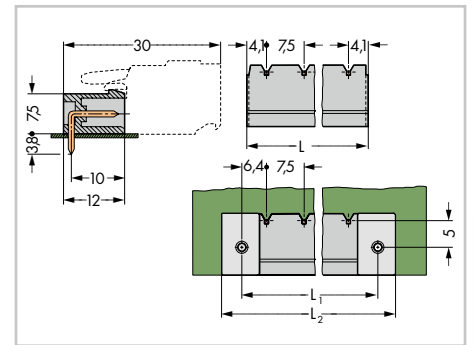
With 1 x 1 mm straight solder pins Pin spacing: 7.5 mm / 0.295 in.		With 1.2 x 1.2 mm straight solder pins Pin spacing: 7.5 mm / 0.295 in.		With 1 x 1 mm angled solder pins Pin spacing: 7.5 mm / 0.295 in.	
630 V/6 kV/2 12A	300 V/10 A	630 V/6 kV/2 16 A	300 V/15 A	630 V/6 kV/2 12A	300 V/10 A



$L = (\text{pole no.} - 1) \times \text{pin spacing} + 8.2 \text{ mm}$



$L = (\text{pole no.} - 1) \times \text{pin spacing} + 8.2 \text{ mm}$



$L = (\text{pole no.} - 1) \times \text{pin spacing} + 8.2 \text{ mm}$
 $L_1 = L + 5 \text{ mm}$
 $L_2 = L_1 + 7.4 \text{ mm}$

Pole No.	Item No.	Pack. Unit	Pole No.	Item No.	Pack. Unit	Pole No.	Item No.	Pack. Unit
Male header with 1 x 1 mm straight solder pins, gray			Male header with 1.2 x 1.2 mm straight solder pins, gray			Male header with 1 x 1 mm angled solder pins, gray		
2	231-232/001-000	200	2	231-262/001-000	200	2	231-832/001-000	200
3	231-233/001-000	200	3	231-263/001-000	200	3	231-833/001-000	200
4	231-234/001-000	100	4	231-264/001-000	100	4	231-834/001-000	100
5	231-235/001-000	100	5	231-265/001-000	100	5	231-835/001-000	100
6	231-236/001-000	100	6	231-266/001-000	100	6	231-836/001-000	100
7	231-237/001-000	50	7	231-267/001-000	50	7	231-837/001-000	50
8	231-238/001-000	50	8	231-268/001-000	50	8	231-838/001-000	50
9	231-239/001-000	50	9	231-269/001-000	50	9	231-839/001-000	50
10	231-240/001-000	50	10	231-270/001-000	50	10	231-840/001-000	50
11	231-241/001-000	50	11	231-271/001-000	50	11	231-841/001-000	50
12	231-242/001-000	50	12	231-272/001-000	50	12	231-842/001-000	50
13	231-243/001-000	50	13	231-273/001-000	50	13	231-843/001-000	50
16	231-246/001-000	50	16	231-276/001-000	50	16	231-846/001-000	50

① MCS MIDI male headers with straight solder pins are also available with 3.8 mm pin projection upon request. Replace item no. suffix: .../001-000 with .../046-000 for this.

X-ON Electronics

Largest Supplier of Electrical and Electronic Components

Click to view similar products for [Wago manufacturer](#):

Other Similar products are found below :

[750-460](#) [231-118/026-000](#) [231-303/026-000](#) [231-620/019-000](#) [257-403](#) [280-438](#) [280-831](#) [284-624](#) [284-681](#) [206-861](#) [210-111](#) [231-303/037-000](#) [231-446/001-000_NR](#) [231-833/001-000](#) [232-216/026-000](#) [234-510](#) [264-726](#) [280-339](#) [793-500 2](#) [51228988](#) [209-132](#) [830-800/000-305](#) [788-507](#) [750-512](#) [264-321](#) [279-101](#) [281-365](#) [713-1428/107-000](#) [731-138/048-000](#) [750-459](#) [750-517](#) [750-601](#) [793-3505](#) [231-535/001-000](#) [2624-1103](#) [787-712](#) [713-1407](#) [2000-5457](#) [221-525](#) [832-1206](#) [832-3604](#) [281-512/281-501](#) [286-336](#) [288-437](#) [750-421](#) [750-838](#) [753-559](#) [750-1505](#) [787-732](#) [753-437](#)