

CPUF120



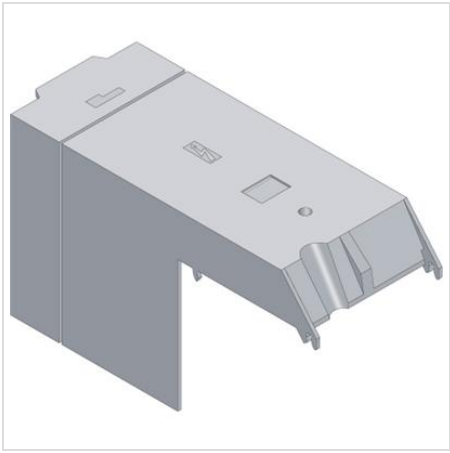
Products Low Voltage Products and Systems Connection Devices Terminal Blocks Accessories Protecting Covers

General Information

Extended Product Type:	CPUF120
Product ID:	1SNA190018R2000
EAN:	3472591900187
Catalog Description:	CPUF120 Protecting Covers Grey

Additional Information

ABB Industrial IT Suite:	Control IT
Color:	Grey
Country of Origin:	Poland (PL)
Customs Tariff Number:	39269097
EAN:	3472591900187
IIT Publishing Status:	Level 0 - Information enabled
Industrial IT Certification Level:	0
Invoice Description:	CPUF120 Protecting Covers Grey
Minimum Order Quantity:	2 piece
Mounting on DIN Rail:	G32 (32 x 15 mm Mounting Rail) acc. to IEC 60715 TH35-7.5 (35 x 7.5 mm Mounting Rail) acc. to IEC 60715 TH35-15 (35 x 15 mm Mounting Rail) acc. to IEC 60715
Object Classification Code:	X
Order Multiple:	2 piece
Package Level 1 EAN:	3472591900187
Package Level 1 Gross Weight:	0.048 kg
Package Level 1 Height:	5 mm
Package Level 1 Length:	300 mm
Package Level 1 Units:	2 piece
Package Level 1 Width:	200 mm
Package Level 2 Height:	150 mm
Package Level 2 Length:	500 mm
Package Level 2 Units:	54 piece
Package Level 2 Width:	300 mm
Package Level 3 Units:	1728 piece
Product Main Type:	CPUF
Product Name:	Cover
Product Net Weight:	24 g
Product Packing Type:	Bag
Selling Unit of Measure:	piece
Suitable For:	D120/42.AF D120/42.FF D120/42.FF.Ex



X-ON Electronics

Largest Supplier of Electrical and Electronic Components

Click to view similar products for [TE CONNECTIVITY](#) manufacturer:

Other Similar products are found below :

[D38999/24FJ4AN](#) [1-2000677-8](#) [SMD100-2](#) [D38999/20WJ43BD](#) [4-176756-8](#) [983-6SE22-12S7-L](#) [D38999/24ZE35PN](#) [DJT10F17-26HN](#) [5-1437490-9](#) [7022X3H](#) [983-6SE18-14P9-L](#) [AFD50-16-23SN-6116-LC](#) [603995-1](#) [D38999/24WF32JE](#) [D38999/24WF32SE-LC](#) [DTS24W19-32HE](#) [D38999/20WD19SB-LC](#) [842723N001](#) [213904-1](#) [C1177A](#) [AFD51-18-32PW-6116-LC](#) [D38999/24FD19PD](#) [D38999/24FD19PD-LC](#) [D38999/24FF32BA](#) [D38999/26WH21PB-LC](#) [D38999/20FH21PE](#) [D38999/20FH21PE-LC](#) [D38999/24FH21PN](#) [DTS20F23-21PE](#) [D38999/20FH21PB-LC](#) [D38999/26FJ35PE](#) [D38999/32Z15N](#) [DTS26W9-35JB-LC](#) [D38999/26JJ29JN](#) [102976-7](#) [D38999/20FJ4SB-LC](#) [1-2322421-6](#) [D38999/20FJ24SB-LC](#) [MS3474L12-10P-LC](#) [MS3474L12-10PW-LC](#) [MS27467T21F16P-LC](#) [D50184-000](#) [WINTOTAL-6-END-USER-LICENCE](#) [164-8033-08](#) [DTS26W17-99HA](#) [MS27468T17F26H](#) [DJT14F17-26HN](#) [DJT14F17-26HB](#) [AFD58-24-61PY-1A](#) [983-6SE18-14S7-L](#)