

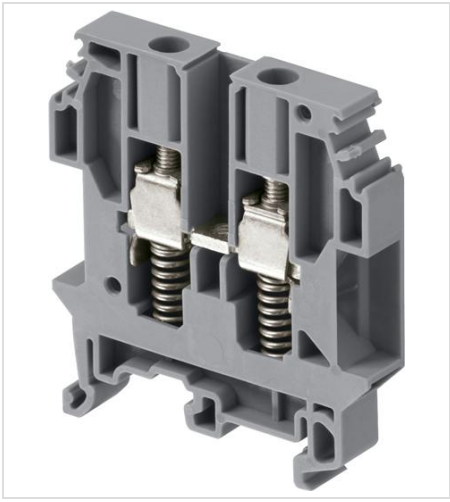
## General Information

|                               |  |
|-------------------------------|--|
| <b>Extended Product Type:</b> | M6/8.RS  |
| <b>Product ID:</b>            | 1SNA115685R1200  |
| <b>EAN:</b>                   | 3472591156850  |
| <b>Catalog Description:</b>   | M6/8.RS Spring Loaded Screw Clamp Terminal Blocks - Feed-through - Grey  |
| <b>Long Description:</b>      | - Mainly dedicated to energy applications based on BS TS5018 standard, - Security: specific shape in linking bar to lock the hook type ferrule, spring clamp can maintain contact pressure even if screw clamp is loose. |

## Additional Information

|   |  |
|---|--|
| <b>ABB Industrial IT Suite:</b>           | Control IT   |
| <b>Ambient Air Temperature:</b>           | Operation -55 ... +110 °C<br>Storage -55 ... +110 °C   |
| <b>Ambient Temperature:</b>               | -5 ... +40 °C  |
| <b>Color:</b>                             | Grey   |
| <b>Connecting Capacity UL/CSA:</b>        | Stranded 12 AWG  |
| <b>Connecting Capacity Main Circuit:</b>  | Screw Clamp / Flexible 1x 0.5 ... 6 mm <sup>2</sup><br>Screw Clamp / Rigid 1x 0.5 ... 10 mm <sup>2</sup>   |
| <b>Connection Type:</b>                   | Safety screw clamp   |
| <b>Country of Origin:</b>                 | France (FR)  |
| <b>Customs Tariff Number:</b>             | 85369010   |
| <b>Data Sheet, Technical Information:</b> | 1SNC160020C0201  |
| <b>Declaration of Conformity - CE:</b>    | 1SND225039U1000  |
| <b>Degree of Protection:</b>              | acc. to IEC 60529, IEC 60947-1, EN 60529 Main Terminals IP20   |
| <b>Dielectric Test Voltage:</b>           | 3000 V   |
| <b>EAC Certificate:</b>                   | 1SND161009A1100  |
| <b>EAN:</b>                               | 3472591156850  |
| <b>ETIM 4:</b>                            | EC000897 - Feed-through terminal block   |
| <b>ETIM 5:</b>                            | EC000897 - Feed-through terminal block   |
| <b>ETIM 6:</b>                            | EC000897 - Feed-through terminal block   |
| <b>Environmental Information:</b>         | 1SND220023E1002  |
| <b>Flammability According to UL94:</b>    | V0   |
| <b>Function:</b>                          | Feed-through   |
| <b>Gauge Type:</b>                        | A5   |
| <b>Gauge(s) of Form:</b>                  | A5   |
| <b>IIT Publishing Status:</b>             | Level 0 - Information enabled  |
| <b>Industrial IT Certification Level:</b> | 0  |
| <b>Instructions and Manuals:</b>          | 1SNC160020C0201  |
| <b>Insulation Material:</b>               | Polyamide  |
| <b>Invoice Description:</b>               | M6/8.RS Spring Loaded Screw Clamp Terminal Blocks - Feed-through - Grey  |
| <b>Minimum Order Quantity:</b>            | 50 piece   |
| <b>Mounting Type:</b>                     | Each wire clamp holds up to 2 bent lugs as shown (not supplied)  |
| <b>Mounting on DIN Rail:</b>              | G32 (32 x 15 mm Mounting Rail) acc. to IEC 60715<br>TH35-7.5 (35 x 7.5 mm Mounting Rail) acc. to IEC 60715<br>TH35-15 (35 x 15 mm Mounting Rail) acc. to IEC 60715 |
| <b>Number of Connections:</b>             | 2  |
| <b>Number of Levels:</b>                  | 1  |

|   |  |
|---|--|
| <b>Object Classification Code:</b>                          | X  |
| <b>Order Multiple:</b>                                      | 50 piece   |
| <b>Package Level 1 EAN:</b>                                 | 3472591156850  |
| <b>Package Level 1 Gross Weight:</b>                        | 0.85 kg  |
| <b>Package Level 1 Height:</b>                              | 65 mm  |
| <b>Package Level 1 Length:</b>                              | 265 mm   |
| <b>Package Level 1 Units:</b>                               | 50 piece   |
| <b>Package Level 1 Width:</b>                               | 82 mm  |
| <b>Package Level 2 Height:</b>                              | 150 mm   |
| <b>Package Level 2 Length:</b>                              | 500 mm   |
| <b>Package Level 2 Units:</b>                               | 500 piece  |
| <b>Package Level 2 Width:</b>                               | 300 mm   |
| <b>Package Level 3 Units:</b>                               | 24000 piece  |
| <b>Pollution Degree:</b>                                    | 3  |
| <b>Product Main Type:</b>                                   | M6/8.RS  |
| <b>Product Name:</b>  | Terminal block   |
| <b>Product Net Depth:</b>                                   | 48.5 mm  |
| <b>Product Net Height:</b>                                  | 50 mm  |
| <b>Product Net Weight:</b>                                  | 17 g   |
| <b>Product Net Width:</b>                                   | 8 mm   |
| <b>Product Packing Type:</b>                                | Box  |
| <b>RMRS Certificate:</b>                                    | 1SND161007A1101  |
| <b>Rated Cross-Section:</b>                                 | 6 mm <sup>2</sup>  |
| <b>Rated Current (I<sub>n</sub>):</b>                       | Main Circuit 41 A  |
| <b>Rated Impulse Withstand Voltage (U<sub>imp</sub>):</b>   | 8000 V   |
| <b>Rated Short-time Withstand Current (I<sub>cw</sub>):</b> | for 1 s 720 A  |
| <b>Rated Voltage (U<sub>r</sub>):</b>                       | 800 V  |
| <b>Recommended Screw Driver:</b>                            | 4.5 mm   |
| <b>RoHS Information:</b>                                    | 1SND230023F0201  |
| <b>Selling Unit of Measure:</b>                             | piece  |
| <b>Short Description:</b>                                   | grey Screw Clamp Terminal Blocks M6/8.RS for bare wire or equipped with bent lug |
| <b>Spacing:</b>   | 8 mm   |
| <b>Sub-Function:</b>  | Feed-through   |
| <b>Sub-Function 3:</b>                                      | Spring-loaded  |
| <b>Sub-Function 4:</b>                                      | Spring-loaded  |
| <b>Tightening Torque:</b>                                   | acc. IEC 60947-1 0.8 N·m<br>Manufacturer 1 N·m                                   |
| <b>Wire Stripping Length:</b>                               | 13.0 mm  |
| <b>Number of Potentials:</b>                                | 1  |



## X-ON Electronics

Largest Supplier of Electrical and Electronic Components

*Click to view similar products for [TE CONNECTIVITY](#) manufacturer:*

Other Similar products are found below :

[D38999/24FJ4AN](#) [1-2000677-8](#) [SMD100-2](#) [D38999/20WJ43BD](#) [4-176756-8](#) [983-6SE22-12S7-L](#) [D38999/24ZE35PN](#) [DJT10F17-26HN](#) [5-1437490-9](#) [7022X3H](#) [983-6SE18-14P9-L](#) [AFD50-16-23SN-6116-LC](#) [603995-1](#) [D38999/24WF32JE](#) [D38999/24WF32SE-LC](#) [DTS24W19-32HE](#) [D38999/20WD19SB-LC](#) [842723N001](#) [213904-1](#) [C1177A](#) [AFD51-18-32PW-6116-LC](#) [D38999/24FD19PD](#) [D38999/24FD19PD-LC](#) [D38999/24FF32BA](#) [D38999/26WH21PB-LC](#) [D38999/20FH21PE](#) [D38999/20FH21PE-LC](#) [D38999/24FH21PN](#) [DTS20F23-21PE](#) [D38999/20FH21PB-LC](#) [D38999/26FJ35PE](#) [D38999/32Z15N](#) [DTS26W9-35JB-LC](#) [D38999/26JJ29JN](#) [102976-7](#) [D38999/20FJ4SB-LC](#) [1-2322421-6](#) [D38999/20FJ24SB-LC](#) [MS3474L12-10P-LC](#) [MS3474L12-10PW-LC](#) [MS27467T21F16P-LC](#) [D50184-000](#) [WINTOTAL-6-END-USER-LICENCE](#) [164-8033-08](#) [DTS26W17-99HA](#) [MS27468T17F26H](#) [DJT14F17-26HN](#) [DJT14F17-26HB](#) [AFD58-24-61PY-1A](#) [983-6SE18-14S7-L](#)