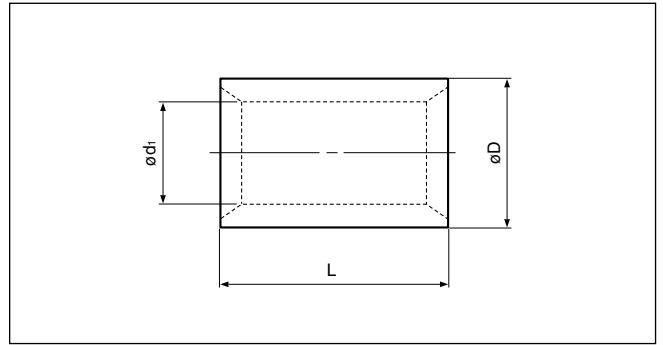


Solderless splices

PARALLEL

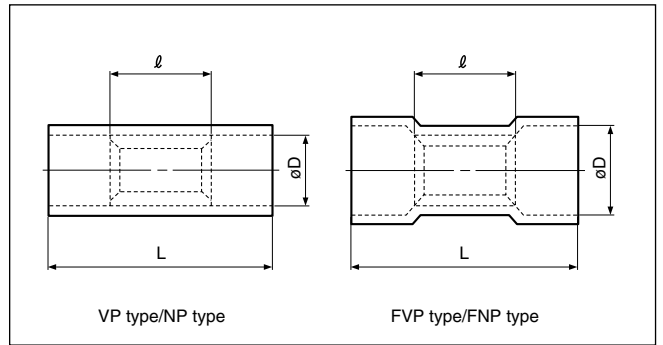
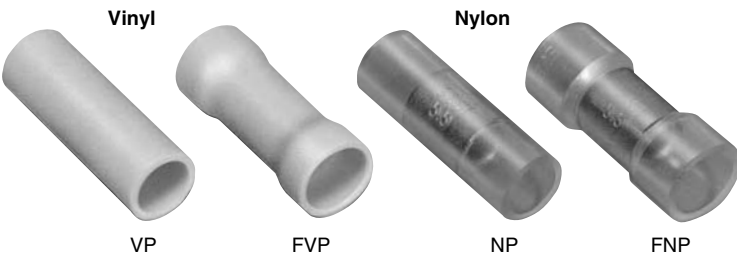


Non-insulated

Certificate No.: E42024 LR20812 JQ0607002

Applicable Wire AWG#(mm ²)	Part No.	Standard	Dimensions mm (in.)			Tool No.										Qty/box								
			L	ø D	ø d ₁	YHT-2210	YHT-8S	YA-1	YA-2	YA-4	YA-5	YPT-60N	YPT-150-1	BCT-0514L	BCT-860L			BCT-8150	YET-60-1	YET-150-1	YET-300-1	YET-300N	YET-60-1	
22 to 16 (0.25 to 1.65)	P-1.25		8.0 (.315)	3.3 (.130)	1.7 (.067)	0	0	0	0	0	0	0	0	0	0	0	0	0	0	0	0	0	1,000	
16 to 14 (1.04 to 2.63)	P-2		8.0 (.315)	4.1 (.161)	2.3 (.091)	0	0	0	0	0	0	0	0	0	0	0	0	0	0	0	0	0		0
12 to 10 (2.63 to 6.64)	P-5.5		8.5 (.335)	5.4 (.213)	3.4 (.134)	0	0	0	0	0	0	0	0	0	0	0	0	0	0	0	0	0		0
8 (6.64 to 10.52)	P-8		9.5 (.374)	7.0 (.276)	4.5 (.177)	0	0	0	0	0	0	0	0	0	0	0	0	0	0	0	0	0	0	500
6 (10.52 to 16.78)	P-14		11.0 (.433)	8.9 (.350)	5.8 (.228)	0	0	0	0	0	0	0	0	0	0	0	0	0	0	0	0	0	0	200
4 (16.78 to 26.66)	P-22		13.5 (.531)	11.3 (.445)	7.7 (.303)	0	0	0	0	0	0	0	0	0	0	0	0	0	0	0	0	0	0	100
2 (26.66 to 42.42)	P-38		16.5 (.650)	13.2 (.520)	9.4 (.370)	0	0	0	0	0	0	0	0	0	0	0	0	0	0	0	0	0	0	
1/0 (42.42 to 60.57)	P-60		19.0 (.748)	15.3 (.602)	11.4 (.449)	0	0	0	0	0	0	0	0	0	0	0	0	0	0	0	0	0	0	
2/0 (60.57 to 76.28)	P-70		19.0 (.748)	17.5 (.689)	13.3 (.524)	0	0	0	0	0	0	0	0	0	0	0	0	0	0	0	0	0	0	50
3/0 (76.28 to 96.3)	P-80		19.5 (.768)	19.5 (.768)	14.5 (.571)	0	0	0	0	0	0	0	0	0	0	0	0	0	0	0	0	0	0	25
4/0 (96.3 to 117.2)	P-100		20.0 (.787)	22.1 (.870)	16.4 (.646)	0	0	0	0	0	0	0	0	0	0	0	0	0	0	0	0	0	0	
250 to 300MCM (117.2 to 152.05)	P-150		27.0(1.063)	26.4(1.039)	19.5 (.768)	0	0	0	0	0	0	0	0	0	0	0	0	0	0	0	0	0	0	20
350MCM (152.05 to 192.6)	P-180		28.5(1.122)	28.5(1.122)	21.0 (.827)	0	0	0	0	0	0	0	0	0	0	0	0	0	0	0	0	0	0	
400MCM (192.6 to 242.27)	P-200		32.0(1.260)	32.4(1.276)	24.0 (.945)	0	0	0	0	0	0	0	0	0	0	0	0	0	0	0	0	0	0	
N.A. (250)	P-250		32.0(1.260)	35.0(1.378)	26.0(1.024)	0	0	0	0	0	0	0	0	0	0	0	0	0	0	0	0	0	0	10
600 to 650MCM (242.27 to 325)	P-325		37.0(1.457)	37.0(1.457)	28.0(1.102)	0	0	0	0	0	0	0	0	0	0	0	0	0	0	0	0	0		

Note:1) Products with the JIS mark conform to JIS C2806.
 2) "Applicable Wires" indicates the total cross-sectional area.
 3) Delivery lead times may vary depending on the product. Contact JST for details.



Vinyl or nylon insulated

Certificate No.: E42024 LR20812

Applicable Wire AWG#(mm ²)	Part No.		Standard	Dimensions mm (in.)			Color	Tool No.							Qty/box								
	Vinyl	Nylon		L	l	ø D		YNT-2216	YNT-1614	YNT-1210S	YA-1	YA-2	YA-4	BCT-0514L	Vinyl	Nylon							
22 to 16 *(0.25 to 1.65)	VP-1.25	NP-1.25		16.0 (.630)	8.0 (.315)	3.2 (.126)	0																1,000
	FVP-1.25	FNP-1.25				4.0 (.157)																	
16 to 14 (1.04 to 2.63)	VP-2	NP-2		16.0 (.630)	8.0 (.315)	3.9 (.154)	0																1,000
	FVP-2	FNP-2				4.5 (.177)																	
12 to 10 (2.63 to 6.64)	VP-5.5	NP-5.5		20.5 (.807)	8.5 (.335)	5.4 (.213)	0																500
	FVP-5.5	FNP-5.5				6.8 (.268)																	

Note:1) *The crimping will be more secure if the total cross-sectional area of the wire is at least 0.5 mm².
 Examples: If the cross-sectional area of the wire is 0.3mm², fold the wire in two when crimping the terminal.
 If the cross-sectional area of the wire is 0.5mm², crimp the terminal onto the wire as it is.
 2) "Applicable Wires" indicates the total cross-sectional area.
 3) Delivery lead times may vary depending on the product. Contact JST for details.

X-ON Electronics

Largest Supplier of Electrical and Electronic Components

Click to view similar products for JST manufacturer:

Other Similar products are found below :

[B02B-WPJSS-1 \(LF\)\(SN\)](#) [SGVHSF-002T-02](#) [IDH-KR-12](#) [10HR-4K](#) [WC-610M](#) [FNGS12-6](#) [TWE0.5-8](#) [YC-110R](#) [FVGS4-1 \(LF\)](#) [WC-800](#)
[WC-PUD2](#) [WC-SFH2](#) [S12B-J21DK-GGXR\(LF\)\(AU\)](#) [MKDP71002](#) [PSIP-06V-LE](#) [WC-SH2832](#) [WC-700M](#) [WC-121](#) [B3B-PH-SM4-](#)
[TB\(LF\)\(SN\)](#) [FVDDF5.5-375A \(LF\)](#) [FVWS2-M4 \(LF\)](#) [FVGS10-6 \(LF\)](#) [YHT-2622](#) [YC-670R](#) [YRS-243](#) [YRS-1090](#) [VLJ-20](#) [WC-0510DIN](#)
[WC-930](#) [WC-GVH2630](#) [S7B-ZR-3.4-\(LF\)\(SN\)](#) [S04B-XASS-1N-BN-\(LF\)\(SN\)](#) [YRS-852](#) [WC-691](#) [WC-1090](#) [IDB-12](#) [GTR1.5-8](#) [YRS-241](#)
[XAP-04V-1](#) [YRS-692](#) [YRS-480](#) [YRS-1091](#) [WC-JWPF](#) [S06B-ZESK-2D\(T\)\(LF\)\(SN\)](#) [WC1091](#) [WC-260P](#) [WC-530](#) [A03WS-MWT-N](#) [IDH-](#)
[NR-12](#) [LEBRP-01V-S](#)