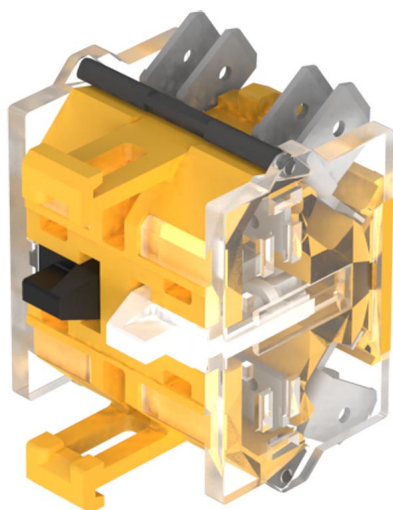


EAO – Your Expert Partner for Human Machine Interfaces

704.905.3/D - Switching element

704.905.3/D - Switching element



Attention: The preview is based on a sample product. This can differ from your current configuration.

Mounting

Mounting cut-out mm

Other Attributes

Weight 0,033 kg

Connection Method

Terminal Double plug 6.3 x 0.8 mm

Switching element

Switching voltage 500 V AC

Switching current 6 A

Switching system Snap-action switching element

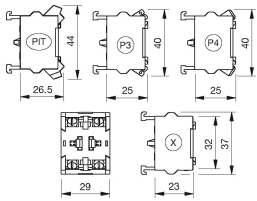
Contacts 2 NO

Contact material Silver

EAO – Your Expert Partner for Human Machine Interfaces

704.905.3/D - Switching element

Dimensions



P4 = Double plug-in terminal 6.3 x 0.8 mm

Wiring diagram



Additional information

For the third switching element the terminal marking insert is to be ordered separately

X-ON Electronics

Largest Supplier of Electrical and Electronic Components

Click to view similar products for [EAO manufacturer](#):

Other Similar products are found below :

[01-151.022](#) [01-951.6](#) [02-072.001](#) [61-0029.0](#) [61-221.50D](#) [61-2601.0/D](#) [61-2607.0/D](#) [61-2701.0/D](#) [61-8520.12](#) [61-8640.11](#) [704.012.618](#)
[704.032.218](#) [704.062.5](#) [704.122.018](#) [704-6012](#) [704.902.3](#) [704-9051](#) [704.918.5](#) [704.942.5](#) [70-911.0](#) [EUS-704.000.7](#) [82-4151.2144](#) [82-](#)
[4153.1000](#) [84-8001.5640](#) [84-8510.0040](#) [95-900.005](#) [14-136.025K](#) [200-4001-00](#) [22-212.011](#) [92-440.000](#) [95-900.009](#) [96-932.5](#) [22-225.011](#)
[22-901.2](#) [31-426.036](#) [45-2134.4F10.000](#) [45-2231.22E0.000](#) [45-280X.1C90.003](#) [45-2C37.1920.000](#) [45-2T00.10E0.000](#) [51-401.036K](#) [31-953.3](#)
[31-955.4](#) [41-461.036](#) [41-908.5/5](#) [45-1131.3150.000.101](#) [45-2231.31H0.000](#) [45-2234.4FH0.000](#) [45-50J.1400](#) [51-155.025D](#)