

## 1.Scope

This specification is applied to Piezo Buzzer (Self-Drive Type)

The product describe below are used for buzzer in various alarm systems.

## 2.Basic Condition

2.1 Rated Voltage:12VDC

2.2 Operating Voltage:8~16VDC

2.3 Operating Temperature Range:-20 °C~+70 °C

2.4 Storage Temperature Range:-30°C~+80 °C

## 3.Electrical Characteristics

3.1 Sound Press Level: $\geq 90$ dB at 30cm / 12VDC

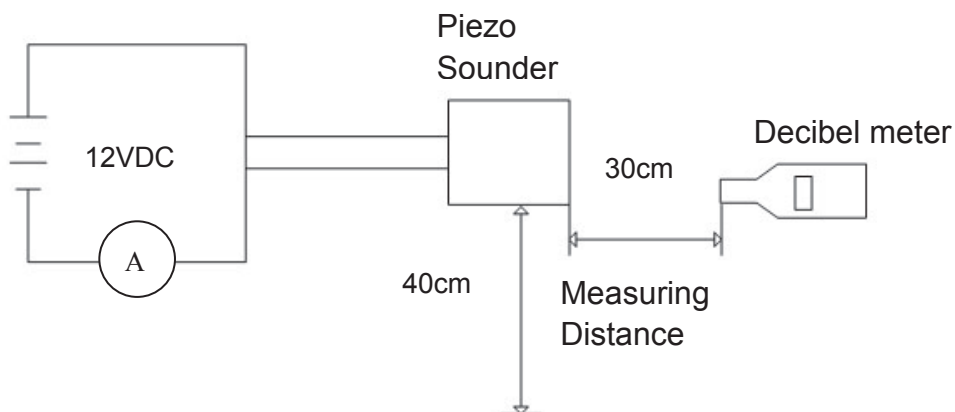
3.2 Consumption Current: $\leq 20$ mA at 12VDC

3.3 Resonate Frequency:3400Hz $\pm$ 500Hz

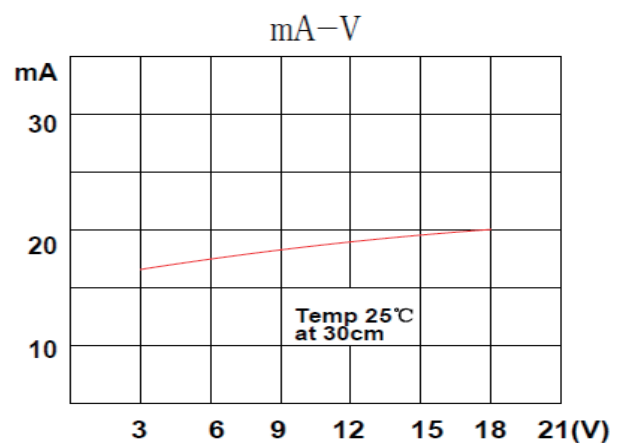
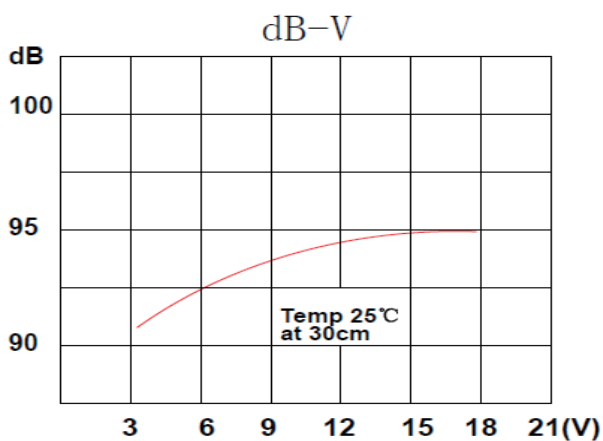
3.4 Tone Nature:Continuous Sound

3.5 Material:ABS

## 4.Measuring Method



## 5.Sound Press Level & Consumption Current Curve



# TEST REPORT

Product No:20EB021

Date:2010-10-23

#	dB	mA	Hz	#	dB	mA	Hz
1	98	6.0	3574				
2	99	6.0	3627				
3	99	6.2	3518				
4	98	6.3	3567				
5	99	6.1	3582				
6	98	5.5	3697				
7	99	5.8	3421				
8	99	5.0	3677				
9	98	6.0	3485				
10	98	5.1	3469				
以下空白							

**Remark:**  
(1)Sound Press Level :  $\geq 90$ dB at 30cm / 12VDC  
(2)Consumption Current :  $\leq 20$ mA at 12VDC  
(3)Resonate Frequency : 3400Hz $\pm 500$

Approved BY:陳毓宏

Auditing BY:陳逸閩

Checked BY: 李秋蓉

## 6.Environment Test Method

NO.	ITEM	TEST CONDITION AND REQUIREMENT
1	High Temperature Test (Storage)	After being placed in a chamber with $80\pm 2^{\circ}\text{C}$ for 96 hours and then being placed in normal condition for 2 hours. Allowable variation of SPL after test: $\pm 10\text{dB}$ .
2	Low Temperature Test (Storage)	After being Placed in a chamber with $-30\pm 2^{\circ}\text{C}$ for 96 hours and then being placed in normal condition for 2 hours. Allowable variation of SPL after test: $\pm 10\text{dB}$ .
3	Humidity Test	After being Placed in a chamber with 90-95% R.H. at $40\pm 2^{\circ}\text{C}$ for 96 hours and then being placed in normal condition for 2 hours. Allowable variation of SPL after test: $\pm 10\text{dB}$ .
4	Temperature Cycle Test	<p>The part shall be subjected to 5 cycles. One cycle shall be consist of:</p> <p>Allowable variation of SPL after test: <math>\pm 10\text{dB}</math>.</p>
5	Drop Test	Drop on a hard wood board of 4cm thick, any directions ,6 times, at the height of 100cm. Allowable variation of SPL after test: $\pm 10\text{dB}$ .
6	Vibration Test	After being applied vibration of amplitude of 1.5mmwith 10 to 55 Hz band of vibration frequency to each of 3 perpendicular directions for 2 hours . Allowable variation of SPL after test: $\pm 10\text{dB}$ .
7	Solder ability Test	Lead terminals are immersed in rosin for 5 seconds and then immersed in solder bath of $+300\pm 5^{\circ}\text{C}$ for $3\pm 1$ seconds.90% min. lead terminals shall be wet with solder (Except the edge of terminals).
8	Terminal / Wire Strength Pulling Test	The force of 9.8N(1.0kg) is applied to each terminal in axial direction for 10 seconds. No visible damage and cutting off.

## 7.Reliability Test

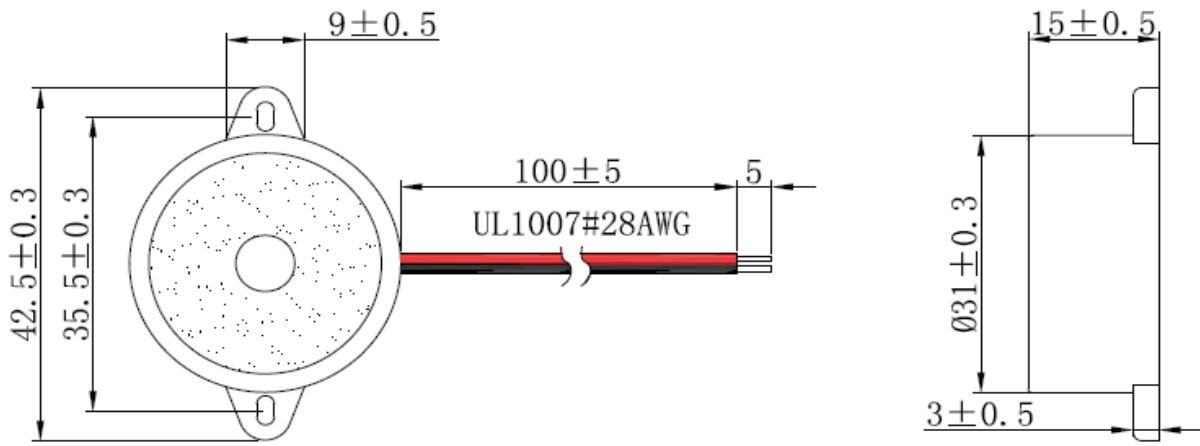
### Continuous life test:

250 Hours continuous operating at  $+70^{\circ}\text{C}$  with maximum rated voltage applied .

### Intermittent life test:

Aduy cycle of 1 minute on, 5 minutes off,a minimum of 10000 times at temperature  $+25^{\circ}\text{C}\pm 2$

## 8.Dimension



Tolerance  $\pm 0.5$ mm

## 9.Packing List

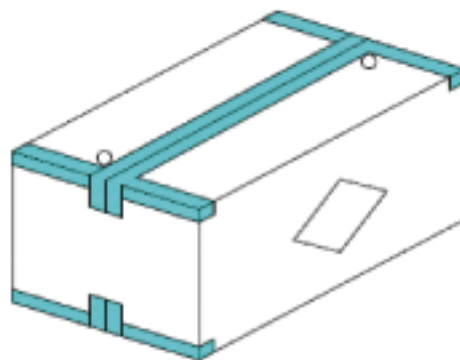


Plastic bag: 20\*23cm

Plastic bag: 50PCS

Carton: 1500PCS

Carton: 47\*30\*25cm



P/N: 20EB021

QTY: 1500PCS

N. W: 11 KGS

G. W: 12 KGS

CTN: 47\*30\*25cm

# X-ON Electronics

Largest Supplier of Electrical and Electronic Components

*Click to view similar products for [Other Tools](#) category:*

*Click to view products by [MCM](#) manufacturer:*

Other Similar products are found below :

[CR-05FL7--150R](#) [CR-05FL7--698K](#) [899-2-KT46](#) [899-5-KT46](#) [CR-0AFL4--332K](#) [CR-12FP4--260R](#) [5718X-01PD-19RO](#) [CRCW04021100FRT7](#)  
[CRCW04021961FRT7](#) [5800-0090](#) [CRCW04024021FRT7](#) [CRCW040254R9FRT7](#) [CRCW0603102JRT5](#) [59065-5](#) [00-8273-RDPP](#) [00-8729-WHPP](#)  
[593033](#) [593058](#) [593072](#) [593564100](#) [593575](#) [593591](#) [593593](#) [LTI506SBLAMNBL](#) [CRCW08052740FRT1](#) [LUC-012S070DSM](#) [LUC-](#)  
[018S070DSP](#) [599-2021-3-NME](#) [599-JJ-2021-03](#) [00-5080-YWPP](#) [5E4750/01-20R0-T/R](#) [LW1A-L1-GD](#) [LW1A-L1-GL](#) [LW1A-P1-GD](#) [LW1L-](#)  
[A1C10V-GL](#) [LW1L-M1C70-A](#) [0202-0173](#) [00-9089-RDPP](#) [CRCW2010331JR02](#) [01-1003W-8/32-10](#) [601-GP-08-KT39](#) [601-JJ-06](#) [601-SPB](#)  
[601YSY](#) [602-JJ-03](#) [602SPB](#) [602Z](#) [603-JJ-07-FP](#) [603-JJY-04](#) [604J](#)