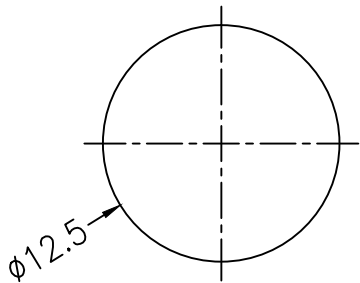
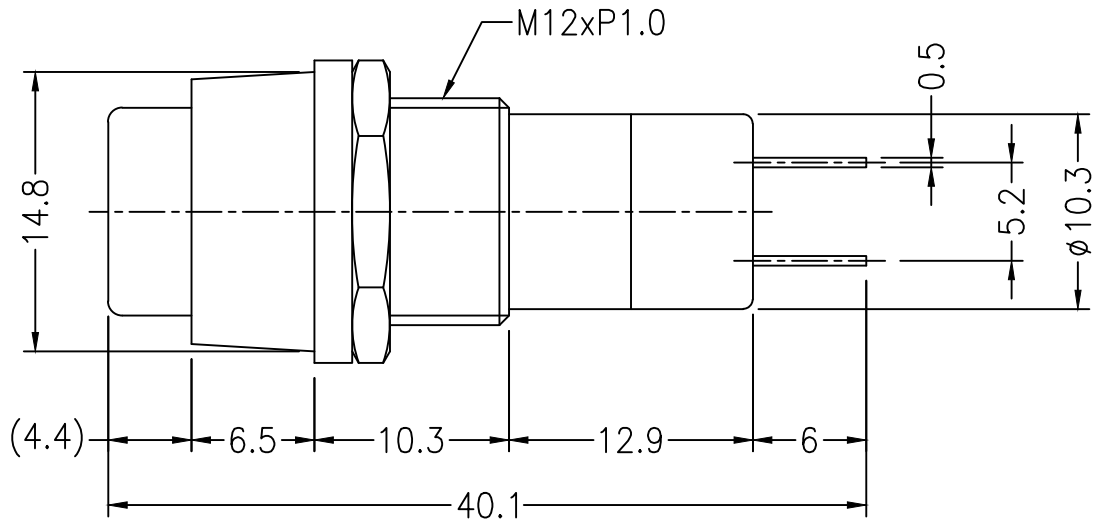
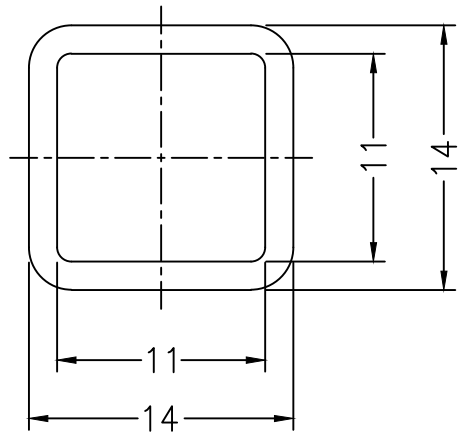


CUSTOMER MCM FILE NO. 26-685,690

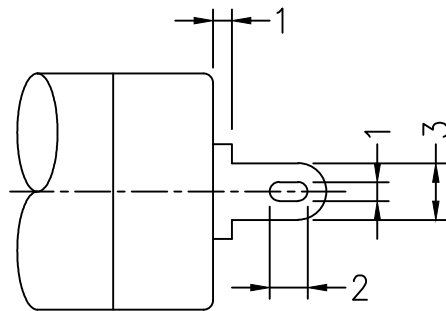
THIS DRAWING AND SPECIFICATIONS, HEREIN ARE THE CONFIDENTIAL PROPERTY OF SAMAR AND SHALL NOT BE REPRODUCED OR COPIED OR DISCLOSED IN WHOLE OR IN PART WITHOUT WRITTEN PERMISSION.

REV.	DESCRIPTION	DRAWN / DATE	APPROVED / DATE
0	INITIAL RELEASE	YANG 12/16/2002	



Panel Thickness  
5.0mm Max.

TOERANCE = ±0.2



P/N	COLOR
26-685	BALCK
26-690	RED

SPECIFICATION:

Rating : AC 125V 3A  
 Contact R. : 50mΩ Max.  
 Insulation R. : DC 500V 100MΩ Min.  
 Dielectric Strength : AC 1500V 1 minute  
 Electrical Life : 20,000 make and break cycles at full load

DIMENSIONS ARE IN mm [INCH]	TOLERANCES ARE FRACTIONS DECIMALS ANGLES	MATERIAL	<b>SAMAR</b>	SQUARE PUSH BUTTON SWITCH	P/N	26-685,690	DRAWN	YANG	DATE	12/16/2002	
MOLD NO.	<del>xx ±0.2 [0.008]</del>	FINISH			PROJECT NO.						
26-685,690	<del>xx ±0.12 [0.005]</del>	COLOR			SCALE	1/1	SIZE		SHEET	1	OF

## **X-ON Electronics**

Largest Supplier of Electrical and Electronic Components

*Click to view similar products for [MCM manufacturer](#):*

Other Similar products are found below :

[NWTBATCAPMB13](#) [25-020](#) [27-505](#) [27-4155](#) [27-840](#) [28-0755](#) [28-5958](#) [50-10820](#) [37-330](#) [PI-UPTIMEUPS](#) [27-5918](#) [27-5977](#) [12-3410](#) [28-6023](#) [55-3230](#) [35SPS-3](#) [28-6008](#) [22-26180](#) [17705](#) [55-5675](#) [27-6020](#) [24-12352](#) [21-7655](#) [28-6017](#) [53-1230](#) [28-5965](#) [21-18966](#) [22-1640](#) [27-4200](#) [83-17607](#) [27-5833](#) [27-5925](#) [24-12344](#) [12-3404](#) [PCM-2100-50](#) [21-19004](#) [28-6080](#) [22-665](#) [24-1040](#) [27-5917](#) [28-6005](#) [55-5670](#)  
[HD15MM35N-100F](#) [21-4605](#) [21-12825](#) [24-5360](#) [27-4270](#) [27-5940](#) [27-5949](#) [27-6112](#)