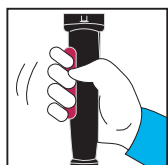
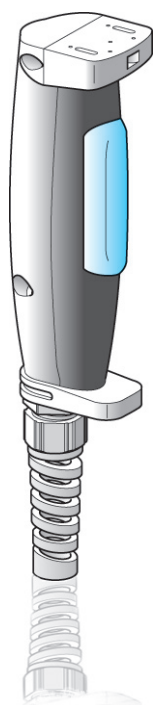


Enabling movement

Enabling switches for safety circuits
XY2AU

Catalog

October **2015**



How can you fit a 6000-page catalog in your pocket ?

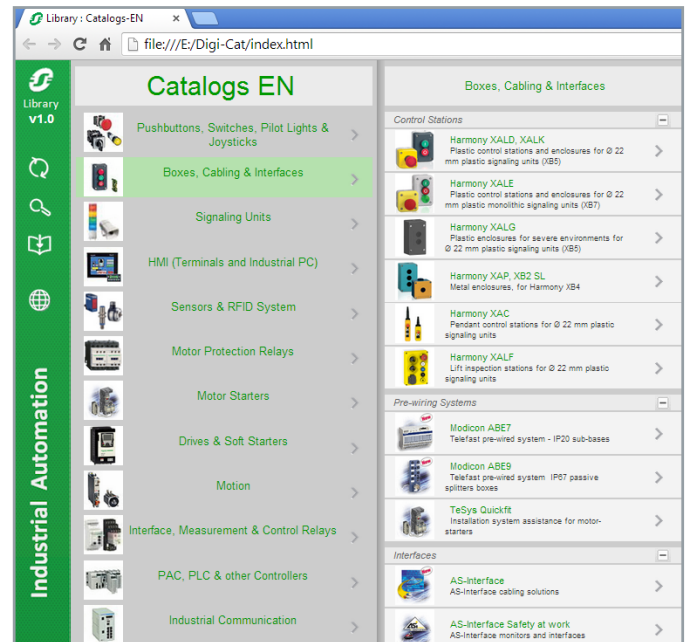
Schneider Electric provides you with the complete set of industrial automation catalogs all on a handy USB key for PC or in an application for tablets



Digi-Cat, a handy USB key for PC



- > Convenient to carry
- > Always up-to-date
- > Environmentally friendly
- > Easy-to-share format



Contact your local representative to get your own Digi-Cat



e-Library, the app for tablets

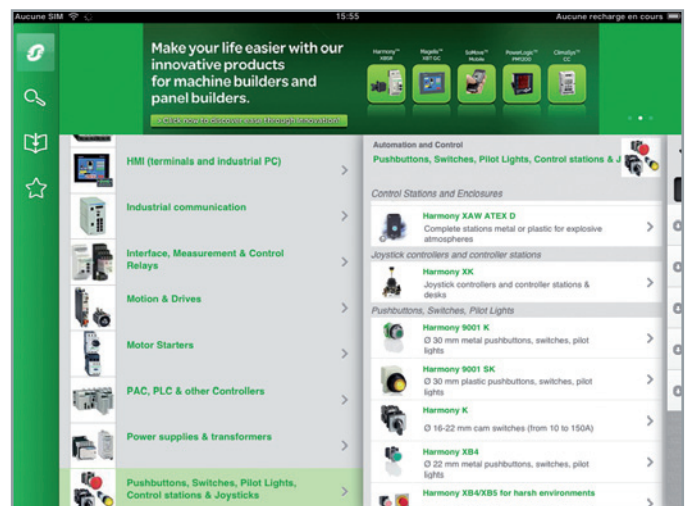
If you have an iPad®:

- > Go to the App Store and search for e-Library
- > or scan the QR code



If you have an Android tablet:

- > Go to the Google Play Store™ and search for eLibrary
- > or scan the QR code



General contents

Enabling movement

Enabling switches for safety circuits

XY2AU

| | |
|-----------------------------|--------|
| ■ Operating principle | page 4 |
| ■ Environment | page 4 |
| ■ References | page 5 |
| ■ Dimensions | page 5 |
| ■ Connections | page 5 |
| ■ Product reference index | |
| - Index..... | page 6 |

Operating principle

Enabling switches, comprising an XY2AU grip and an XPSVC monitoring module, allow authorised personnel to undertake adjustment, programming or maintenance operations near machine equipment hazardous zones, providing certain conditions are met.

In effect, to gain access, these operations, often performed at reduced speed, must be selected by authorised personnel using selectors, with or without keys. Once selection is made, the enabling switch temporarily assumes control of the hazardous zone's usual protection measures. Important note: the enabling switch alone must not lead to the actuation of any dangerous movements associated with the machine; a secondary, intentional control action is required from the operator. In addition, each person in the hazardous zone must be provided with an enabling switch to ensure their own safety.

Environment

| | | | |
|---------------------------|--------------------|-----------|--|
| Conforming to standards | Products | | IEC/EN 60947-1 , IEC/EN 60947-5-1, cUL us 508 and CSA C22-2 n° 14 |
| | Machine assemblies | | IEC/EN 60204-1 |
| Maximum safety level (1) | | | PL e, category 4 conforming to EN/ISO 13849-1 and SIL 3 conforming to EN/IEC 61508 |
| Reliability data B10d | | | 5,000,000 (data value for a service life of 10 years: can be limited by contact and mechanical wear) |
| Protective treatment | | | Standard version: "TC" |
| Ambient air temperature | Operation | °C | - 10...+ 60 |
| | Storage | °C | - 40...+70 |
| Vibration resistance | | | 6 gn (5...55 Hz) conforming to IEC 60068-2-6 |
| Shock resistance | | | 10 gn (11 ms) conforming to IEC 60068-2-27 |
| Electric shock protection | | | Class II conforming to IEC/EN 61140 |
| Degree of protection | | | IP 66 conforming to IEC 60529, IP 65 with a pushbutton, IK 06 conforming to EN 50102 |
| Mechanical durability | | Op. cycle | 1 million |
| Enclosure | | | Double insulated enclosure made of PA66 |
| Cable diameter | | mm | 7...13 |

Contact block characteristics

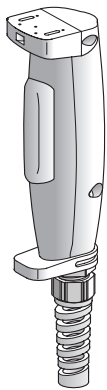
| | | | |
|--|-----------------|--|--|
| Rated operational characteristics | | | \sim AC-15 : C300 or $U_e = 250$ V, $I_e = 1.5$ A or $U_e = 125$ V, $I_e = 0.75$ A --- DC-13 : R300 or $U_e = 250$ V, $I_e = 0.1$ A or $U_e = 125$ V, $I_e = 0.22$ A conforming to IEC 60947-5-1 Appendix A |
| Thermal current (Ithe) | A | | 5 |
| Rated insulation voltage (Ui) | V | | 250, degree of pollution III (II inside) conforming to IEC 60947-1 125, contact 7-8 |
| Rated impulse withstand voltage (Uimp) | kV | | 2.5 conforming to EN 60947-1 |
| Positive operation | | | 23-position contacts with positive opening operation conforming to IEC 60947-5-1 appendix K |
| Contact operation | | | Slow break |
| Resistance across terminals | mΩ | | ≤ 50 |
| Actuation force | | | 1...2: 12 N 2...3: 50 N |
| Terminal referencing | | | Numbered conforming to CENELEC EN 50013 |
| Short-circuit protection | | | 4 A cartridge fuse type gG (gl) |
| Connection | mm ² | | Terminal block, 1 x 0.34...1 x 1.5 |

(1) Using an appropriate and correctly connected control system.

Enabling movement

Enabling switches for safety circuits

XY2AU



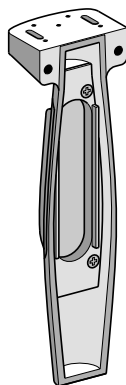
XY2AU●



XY2AZ1



XY2AZ2



XY2AZ3

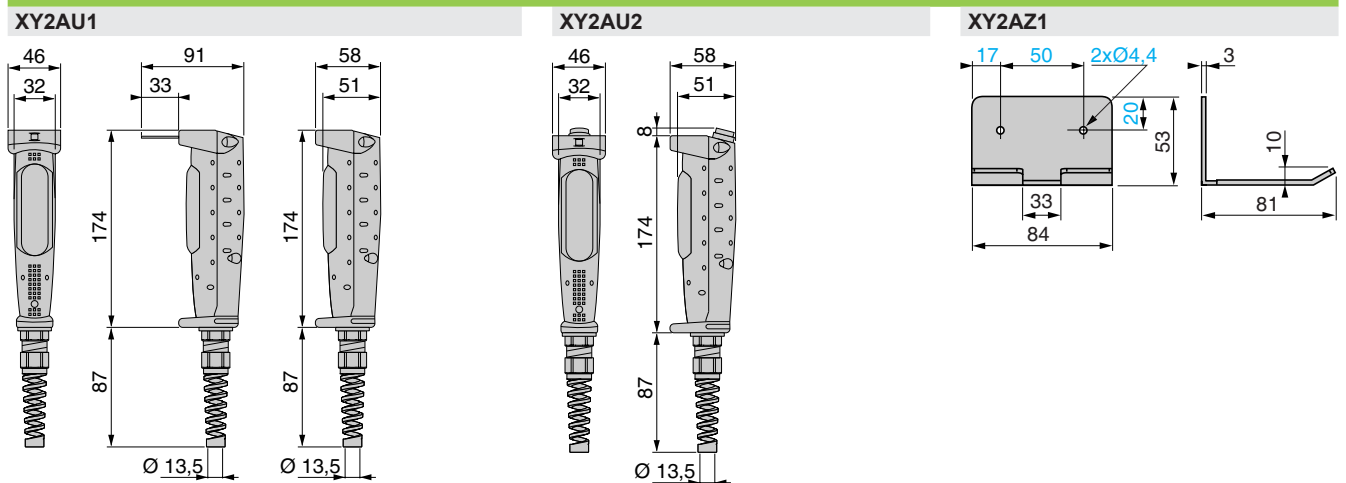
References

| Number of contacts | Contact type | Contact blocks and scheme | Reference | Weight kg |
|--------------------|---|---------------------------|-----------|-----------|
| 3 | 2 enabling 3 positions + 1 N/C | | XY2AU1 | 0.310 |
| | 2 enabling 3 positions + 1 N/C + 1 N/O supplementary contact | | XY2AU2 | 0.320 |

Separate components and spare parts

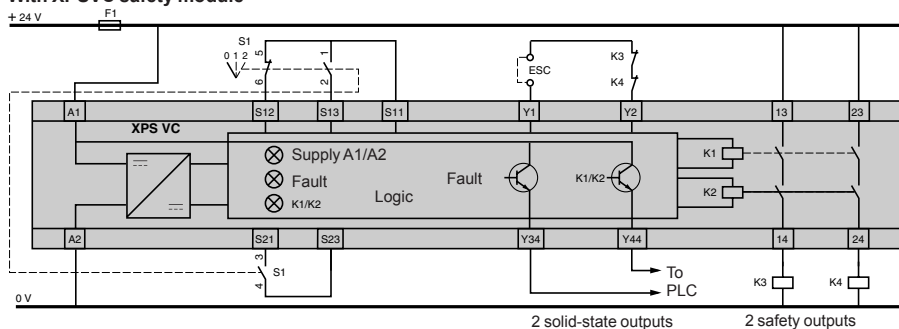
| Description | Reference | Weight kg |
|---|-----------|-----------|
| Grip support | XY2AZ1 | 0.215 |
| Cover kit for key actuator XCSZ01 or XCSZ11 only applicable to XY2AU1 | XY2AZ2 | 0.015 |
| Cover | XY2AZ3 | 0.060 |

Dimensions



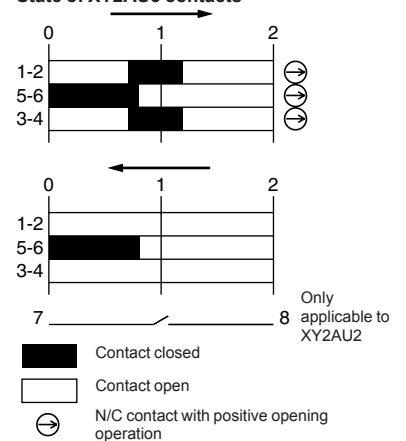
Connection example

With XPSVC safety module



ESC : external start conditions

State of XY2AU● contacts



| | |
|----------|---|
| X | |
| XY2AU1 | 5 |
| XY2AU2 | 5 |
| XY2AZ1 | 5 |
| XY2AZ2 | 5 |
| XY2AZ3 | 5 |



More information on
<http://www.schneider-electric.com/machinesafety>

Schneider Electric Industries SAS

Head Office
35, rue Joseph Monier
F-92500 Rueil-Malmaison
France

The information provided in this documentation contains general descriptions and/or technical characteristics of the performance of the products contained herein. This documentation is not intended as a substitute for and is not to be used for determining suitability or reliability of these products for specific user applications. It is the duty of any such user or integrator to perform the appropriate and complete risk analysis, evaluation and testing of the products with respect to the relevant specific application or use thereof. Neither Schneider Electric nor any of its affiliates or subsidiaries shall be responsible or liable for misuse of the information contained herein.

Design: Schneider Electric
Photos: Schneider Electric

X-ON Electronics

Largest Supplier of Electrical and Electronic Components

Click to view similar products for [Emergency Stop Switches / E-Stop Switches](#) category:

Click to view products by [Schneider](#) manufacturer:

Other Similar products are found below :

[84-5021.2B40](#) [84-6830.0020](#) [A01ESSP8](#) [A22EL-M-24A-11B](#) [AVN302N-R](#) [A165E-S-01\(STOP\)](#) [AYLD2212602SN-R-TK962](#)
[AVLD39911N-R-24V](#) [A22Z-EG22](#) [A165E-SY](#) [3100.0110Y](#) [3050.1302Y](#) [3SE2243-0XX40](#) [3SK1111-2AB30](#) [3SK1211-1BB40](#) [44-710](#) [84-](#)
[6841.2B20](#) [84-6830.0040](#) [H3141AAKAA](#) [A165E-R-24D-01](#) [E3102AAAAB](#) [A22E-M-03](#) [ZA2BV05](#) [A22EL-M-T2-01](#) [951FY000-WO](#)
[ER6022-022N](#) [952+2000-00](#) [ES3S51653](#) [601+0000-OP](#) [E3101AAAAB](#) [84-5130.0040](#) [CS AR-05V024](#) [CS AR-22V024](#) [DS AE1VA](#) [DS](#)
[KB2A](#) [DS KB3A](#) [HE2G-21SHE-L-K](#) [HE6B-M211Y](#) [774191](#) [774316](#) [777760](#) [R1.100.0129.0 SMA0129- NO/NO](#) [R1.188.0640.0 SNV](#)
[4063KL-A](#) [R1.188.1810.0 SNA 4043K-A](#) [R1.188.1840.0 SNA 4043K-A](#) [SR BD40ALK-B02F](#) [AVLW39911D-R-120V](#) [AYD311NUG](#)
[AVLD32211DNUR](#) [84-5040.0020.0049](#)