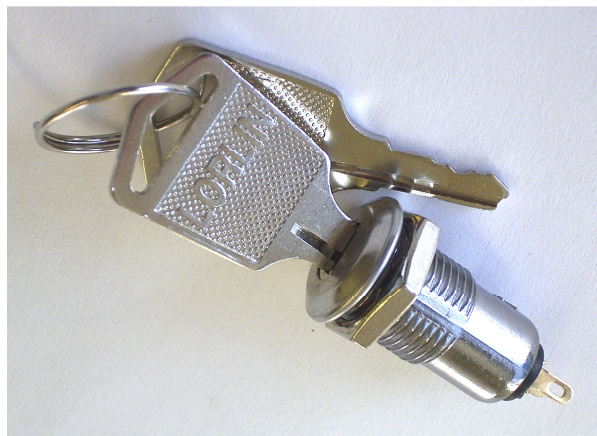


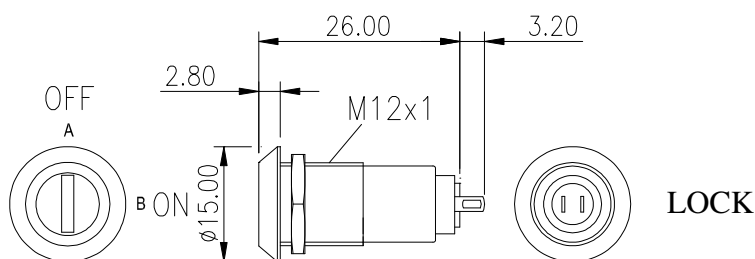
GENERAL ELECTRICAL & MECHANICAL SPECIFICATION

Switch Rating	0.5A @ 24Vac/dc resistive
Life:	>10,000 Cycles
Proof voltage:	1000VAC 1 minute (initial)
Insulation Resistance:	>500MΩ min at 500Vdc(initial)
Contact Resistance:	<20 mΩ max

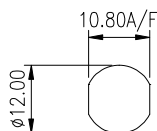


GENERAL FEATURES

- Zinc alloy die cast housing
- Stainless steel capped bezel
- Single pole, single throw lock switch, 90° indexing.
- Bright chrome plated housing
- Brass keys, nickel plated
- Key insertion/removal in both positions as required
- Radial cylinder with 4 pin tumblers.
- Low Security.
- 10 Differ Key Combination



PANEL PIERCING DETAILS



ORDERING CODE	KEY	KEY WITHDRAWAL	KEY TRAVEL	SWITCH OFF - ON
SKL-12-A-S-2	SAME	A & B	90°	
SKL-12-B-S-2	SAME	A ONLY	90°	
SKL-12-A-D-2	DIFFER	A & B	90°	
SKL-12-B-D-2	DIFFER	A ONLY	90°	

Same Key Ref Key 134 (SKL)

X-ON Electronics

Largest Supplier of Electrical and Electronic Components

Click to view similar products for [Lorlin](#) manufacturer:

Other Similar products are found below :

[WRL-5-M-S-2](#) [CK2395](#) [CK1055](#) [CKL6014](#) [CK1457](#) [CK2376](#) [MTS-11-80](#) [CK1455](#) [WRL-5-E-S-2](#) [WRLM-5-T-S](#) [WRLM-5-S-S](#) [CKS1027](#)
[CK2425](#) [SRL-5-L-S-2](#) [CK1034](#) [SRL-5-L-D-2](#) [SKL-12-B-D-2](#) [CK2368](#) [BCK1004](#) [CK2441](#) [RMS1100](#) [CK1044](#) [CK1590](#) [DSL-6-D-S](#) [SRL-](#)
[5-D-S-2](#) [CK1035](#) [BCK1001](#) [GCK1022](#) [CK2404](#) [GCK1023](#) [IRL-5-K-S-2](#) [WRLM-5-Q-S](#) [GCK1026](#) [406817F](#) [WRL-5-M-D-2](#) [IRL-5-M-D-2](#)
[CK2374](#) [BCK1019](#) [CK2396](#) [MDST-1-10K-W-ESA-N-1-N-Y](#) [BCK1006](#) [BCK1020](#) [MDST-1-220K-W-ESA-N-1-N-Y](#) [IRL-5-M-S-2](#) [CK1592](#)
[CKF1059](#) [CKAEAA1500](#) [CK1451](#) [CK1057](#) [CK1042](#)