

WRLM MAINS LOCK SWITCHES

GENERAL ELECTRICAL & MECHANICAL SPECIFICATION

Switch Rating:	4/80A @250V ac. R/C
Life:	>15,000 Cycles
Operating Temperature:	-25°C to +85 °C
Proof Voltage:	3kV min. (Initial)
Insulation Resistance:	>999 MΩ at 500Vdc (Initial)
Contact Resistance:	<20 mΩ (Initial)
Flame Retardency:	UL94 V0
Switch contacts:	Silver Cadmium Oxide
Switch Chamber:	Polyamide 6.6 GF V0 Rated
Tag Panel:	SRBP
Terminals:	Brass CZ108 Ag Plated
Lock Housing:	Zinc Alloy Bright Chrome Plated
Keys per lock:	2 off - Brass Ni Plated

RoHS COMPLIANT



Switch Module ENEC approved to EN61058 by DEMKO
ASSEMBLY IP66 / IP67 RATED

CIRCUITRY	TERMINAL LAYOUT VIEWED FROM REAR OF SWITCH	KEY WITHDRAWAL POSITIONS
2 POLE OFF-ON		
2 POLE ON-OFF (NORMALLY CLOSED)		

GENERAL FEATURES

- Made in UK.
- Miniature key –operated Lock
- Up to 200 key combinations - keys to differ
- Common keys available – keys to pass
- Two part construction. The lock is inserted into the panel from the front. The mains switch module snaps-on, from the rear of the panel.
- Standard solder terminals (Printed circuit terminals optional – add /P to part number).
- For continued exterior use lubricate lock regularly
- Snap on switch module
- M16 earth tag available as an optional extra

WRLM ORDER CODES

SWITCH	KEY	POSITION IN WHICH KEY FREE	Tapered lock Head Order-codes
2 POLE OFF – ON	DIFFERS DIFFERS	0° and 90° (1+4) 0° only (1)	WRLM -5-Q-D WRLM -5-S-D
2 POLE OFF – ON	SAME SAME	0° and 90° (1+4) 0° only (1)	WRLM -5-Q-S WRLM -5-S-S
2 POLE ON-OFF	DIFFERS DIFFERS	0° and 90° (1+4) 0° only (1)	WRLM -5-R-D WRLM -5-T-D
2 POLE ON-OFF	SAME SAME	0° and 90° (1+4) 0° only (1)	WRLM -5-R-S WRLM-5-T-S

LOCK TYPE: 5 Disc.

LOCK MOVEMENT: 90°

LOCK COMBINATIONS: 200 differs or all to pass (same key for all locks).

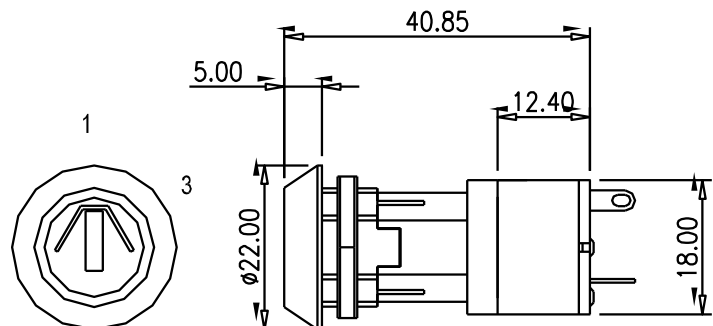
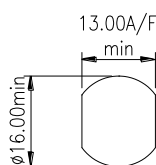
KEY TYPE: Flat, double entry (key can be inserted into the lock either way up).

MASTER KEY SYSTEM AVAILABLE: No

MAXIMUM PANEL THICKNESS: 4.5mm.

NUMBER OF KEYS: 2

PANEL PIERCING DETAILS



TAPERED LOCK HEAD

X-ON Electronics

Largest Supplier of Electrical and Electronic Components

Click to view similar products for [Lorlin manufacturer](#):

Other Similar products are found below :

[WRL-5-M-S-2](#) [CK2395](#) [CK1055](#) [CKL6014](#) [CK1457](#) [CK2376](#) [MTS-11-80](#) [CK1455](#) [WRL-5-E-S-2](#) [WRLM-5-T-S](#) [WRLM-5-S-S](#) [CKS1027](#)
[CK2425](#) [SRL-5-L-S-2](#) [CK1034](#) [SRL-5-L-D-2](#) [SKL-12-B-D-2](#) [CK2368](#) [BCK1004](#) [CK2441](#) [RMS1100](#) [CK1044](#) [CK1590](#) [DSL-6-D-S](#) [SRL-](#)
[5-D-S-2](#) [CK1035](#) [BCK1001](#) [GCK1022](#) [CK2404](#) [GCK1023](#) [IRL-5-K-S-2](#) [WRLM-5-Q-S](#) [GCK1026](#) [406817F](#) [WRL-5-M-D-2](#) [IRL-5-M-D-2](#)
[CK2374](#) [BCK1019](#) [CK2396](#) [MDST-1-10K-W-ESA-N-1-N-Y](#) [BCK1006](#) [BCK1020](#) [MDST-1-220K-W-ESA-N-1-N-Y](#) [IRL-5-M-S-2](#) [CK1592](#)
[CKF1059](#) [CKAEAA1500](#) [CK1451](#) [CK1057](#) [CK1042](#)