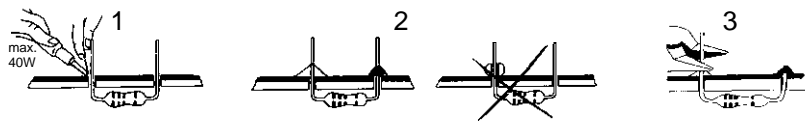


Soldering - Solderen - Soudage - Löten - Soldadura - Lödning - Juottaminen - Saldatura - Solda



PMK120T **START** **1** Resistor - Weerstand - Résistance - Widerstand - Resistencia - Motstand - Vastus - Resistenze

◇ R1, R4, R5 : 1K (Brown, Black, Red) - (Bruin, Zwart, Rood) - (Brun, Noir, Rouge) - (Braun, Schwarz, Rot) - (Brun, Svart, Röd) - (Ruskea, Musta, Punainen) - (Marrón, Negro, Rojo) - (Castanho, Preto, Encarnado) - (Marrone, Nero, Rosso)
 ◇ R2, R3: 100K (Brown, Black, Yellow) - (Bruin, Zwart, Geel) - (Brun, Noir, Jaune) - (Braun, Schwarz, Gelb) - (Brun, Svart, Gul) - (Ruskea, Musta, Keltainen) - (Marrón, Negro, Amarillo) - (Castanho, Preto, Amarelo) - (Marrone, Nero, Giallo)
 ◇ R6: 82E (Grey, Red, Black) - (Grijs, Rood, Zwart) - (Gris, Rouge, Noir) - (Grau, Rot, Schwarz) - (Grá, Röd, Svart) - (Harmaa, Punainen, Musta) - (Gris, Rojo, Negro) - (Cinzento, Encarnado, Preto) - (Grigio, Rosso, Nero)

PMK120R **START** **1** Resistor - Weerstand - Résistance - Widerstand - Resistencia - Motstand - Vastus - Resistenze

◇ R1, R6 : 10K (Brown, Black, Orange) - (Bruin, Zwart, Oranje) - (Brun, noir, Orange) - (Braun, Schwarz, Orange) - (Brun, Svart, Orange) - (Ruskea, Musta, Oranssi) - (Marrón, Negro, Naranjado) - (Castanho, Preto, Laranja) - (Marrone, Nero, Aranciato)
 ◇ R4, R7, R8 : 100K (Brown, Black, Yellow) - (Bruin, zwart, Geel) - (Brun, noir, Jaune) - (Braun, Schwarz, Gelb) - (Brun, Svart, Gul) - (Ruskea, Musta, Keltainen) - (Marrón, Negro, Amarillo) - (Castanho, Preto, Amarelo) - (Marrone, Nero, Giallo)
 ◇ R2, R3, R5, R12, R13: 1K (Brown, Black, Red) - (Bruin, Zwart, Rood) - (Brun, Noir, Rouge) - (Braun, Schwarz, Rot) - (Brun, Svart, Röd) - (Ruskea, Musta, Punainen) - (Marrón, Negro, Rojo) - (Castanho, Preto, Encarnado) - (Marrone, Nero, Rosso)
 ◇ R9, R10 : 330K (Orange, Orange, Yellow) - (Oranje, Oranje, Geel) - (Orange, Orange, Jaune) - (Orange, Orange, Gelb) - (Orange, Orange, Gul) - (Oranssi, Oranssi, Keltainen) - (Naranjado, Naranjado, Amarillo) - (Laranja, Laranja, Amarelo) - (Aranciato, Aranciato, Giallo)
 ◇ R11 : 470K (Yellow, Purple, Yellow) - (Geel, Paars, Geel) - (Jaune, Violet, Jaune) - (Gelb, Violet, Gelb) - (Gul, Lila, Gul) - (Keltainen, Purppura, Keltainen) - (Amarillo, Morado, Amarillo) - (Amarelo, Violeta, Amarelo) - (Giallo, Viola, Giallo)

MK120_rev.3

<p>2 Diode</p> <p>Watch the polarity ! Att. la polarité !</p> <p>◇ D1 : 1N4007</p>	<p>3 IR-LED</p> <p>Watch the polarity ! Att. la polarité !</p> <p>◇ LD1 ◇ LD2</p>	<p>4 Capacitor</p> <p>◇ C1, C2 : 1n5 (152)</p>	<p>5 Switch</p> <p>◇ SW1</p>
---	--	---	-------------------------------------

<p>2 Diodes</p> <p>Watch the polarity ! Att. la polarité !</p> <p>◇ D1 ... D3 : 1N4007</p>	<p>3 Phototransistor</p> <p>Watch the polarity ! Att. la polarité !</p> <p>◇ T1</p>	<p>4 Capacitors</p> <p>◇ C1, C2 : 47nF (473)</p>	<p>5 Switch</p> <p>◇ SW1</p>	<p>6 Transistors</p> <p>◇ T2 : BC547C</p>
---	--	---	-------------------------------------	--

<p>7 Power Jack</p> <p>◇ SK2</p>	<p>8 LED</p> <p>Watch the polarity ! Att. la polarité !</p> <p>◇ LD1</p>	<p>9 Electrolytic capacitor</p> <p>WATCH THE POLARITY ! ATTENTION À LA POLARITÉ !</p> <p>◇ C3, C4 : 2.2µF ◇ C5 : 1000µF</p>	<p>10 IC socket & IC</p> <p>◇ IC1 : 324</p>
---	---	--	--

<p>6 Transistors</p> <p>◇ T1 ... T3 : BC547C</p>	<p>7 Power Jack</p> <p>◇ SK1</p>	<p>8 Battery Holder</p> <p>- (BLACK) + (RED)</p>
---	---	---

<p>11 Buzzer</p> <p>◇ BUZ1</p>	<p>12 Battery holder</p> <p>+ (RED) - (BLACK)</p>	<p>13</p> <p>4M MAX (4.5YRD)</p> <p>PMK120T → PMK120R</p> <p>PMK120T → PMK120R</p>
---------------------------------------	--	---

X-ON Electronics

Largest Supplier of Electrical and Electronic Components

Click to view similar products for [Velleman](#) manufacturer:

Other Similar products are found below :

[MK137](#) [MK106](#) [K2622](#) [K/DIODE1](#) [72-6514](#) [MK108](#) [K8072](#) [K2634](#) [80-7352](#) [K/TF300](#) [MK149](#) [HPS140MK2](#) [VM100](#) [MK123](#) [MK144](#)
[MK152](#) [K8086](#) [K/RES-E12](#) [MK190](#) [MK134](#) [K/TRANS1](#) [CD018](#) [K1803](#) [K/RES-E3](#) [MK111](#) [MK103](#) [MK100](#) [OMSB36](#) [K/CAP1](#) [MK109](#)
[MK120](#) [MK135](#) [MK150](#) [MK112](#) [VTHH6](#)