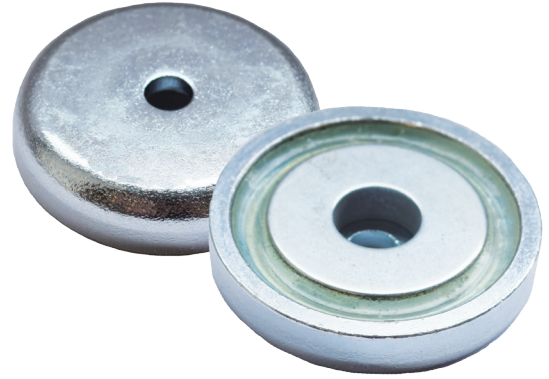


# Neodymium shallow pot datasheet

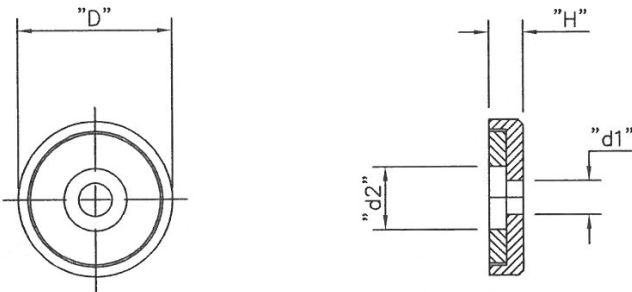
## Borehole

- Zinc plated body
- 80° max operating temp
- Used in point of sale etc.



### Product Information

Product Number	Diameter mm	Thickness* mm	Hole In Body mm	Hole In Magnet mm	Depth mm	Weight g	Pull Force kg	Units / Pack
E1010/NEO	16	5	3.5	6.5	3.8	9.9	4	20
E1011/NEO	20	7	4.5	8	5.5	13	6	10
E1012/NEO	25	8	5.5	9	6	29.1	14	10
E1013/NEO	32	8	5.5	9	5.5	36	23	10
E1014/NEO	42	9	6.5	11	6	52	32	5



If you have any more questions, require technical assistance and would like a quotation, simply contact us.

[www.eclipsemagnetics.com](http://www.eclipsemagnetics.com)

Eclipse Magnetics Ltd, Atlas Way, Sheffield, S4 7QQ, England  
 T +44 (0)114 225 0600 F +44 (0)114 225 0525 E [info@eclipsemagnetics.com](mailto:info@eclipsemagnetics.com)

While every effort has been made to ensure the accuracy of the information in this publication please note that specifications may change without notice.



FM31278

## **X-ON Electronics**

Largest Supplier of Electrical and Electronic Components

*Click to view similar products for [Eclipse manufacturer](#):*

Other Similar products are found below :

[E891](#) [E890](#) [N822](#) [MRT810T](#) [5MT-7600-LC](#) [902-340](#) [E771NEO](#) [E1003/NEO](#) [FM662](#) [E774NEO](#) [N820](#) [N852N](#) [NH025](#) [N806](#) [N854S](#)  
[E998/NEO](#) [828](#) [831](#) [FM663](#) [E761NEO](#) [E1004/NEO](#) [E872](#) [N815](#) [122](#) [N859](#) [E805](#) [E1000/NEO](#) [E862](#) [E772NEO/F](#) [E756NEO](#) [N818](#)  
[NH065](#) [N854N](#) [E1023/NEO](#) [MRT625MFF](#) [E892](#) [N850N](#) [FM699](#) [E905/F](#) [NH130](#) [E853/2](#) [834](#) [E876](#) [E881](#) [N862](#) [E906/F](#) [E1002/NEO](#)  
[N851S](#) [E1014/NEO](#) [E855/2](#)