



Datenblatt - Fiche technique - Data sheet

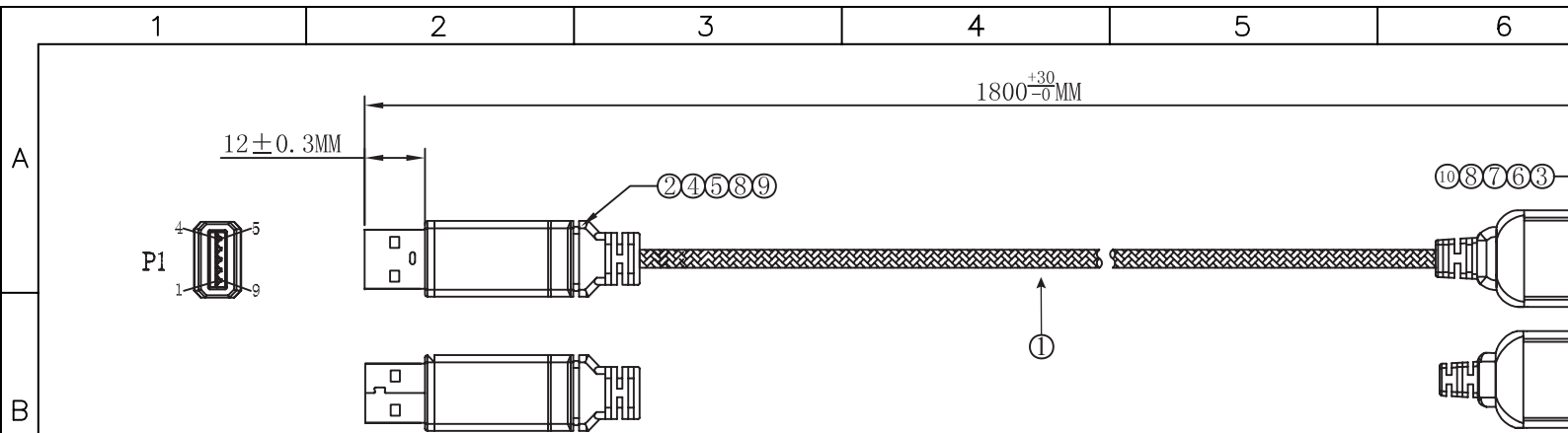
**11.02.8902**



ROLINE GOLD USB 3.0 Kabel, Typ A-B, 1,8m

ROLINE GOLD Câble USB 3.0, type A - B, M/M, 1,8m

ROLINE GOLD USB 3.0 Cable, A - B, M/M, 1.8 m



**Electrical Test :**

1. 100% Test(Open, Short, Miss Wire)
2. Contact Resistance: 5 ohm Max.
3. Insulation Resistance: 5M ohm Min.
4. Hi-pot: 300V DC/10ms

**Specification :**

- |    |               |  |
|----|---------------|--|
| 1  | Cable         | USB3.1 Gen 1 Cable, [(28#(7/0.127TC)*1P+DW+AL/MY)*2P+28#*2C+24#(7/0.2TC)*AEB(65%AL), OD: 5.5mm, Jacket: Black with Braid, Printing: E301195 AWM STYLE 2725 80°C 30V VW-1 SUPER HIGH SPEED Revision 3.0 |
| 2  | Connector     | USB 3.1 AM, Insulator: Blue, Pin: Gold Plated  |
| 3  | Connector     | USB 3.1 BM, Shell: Gold Plated, Insulator: Blue, Pin: Gold Plated  |
| 4  | Front Shell   | For USB 3.1 AM, Gold Plated  |
| 5  | Rear Shell    | For USB 3.1 AM, Nickel Plated  |
| 6  | Aluminum Foil | W*L= 14mm*30mm, Conductive on Double Side  |
| 7  | Inner Molding | PE   |
| 8  | Outer Molding | PVC: 45P, Color: Black, RoHS   |
| 9  | Hood          | For USB 3.1 AM, Aluminum, Color: Gold, L*W*H=24.2*15.9*9.1mm   |
| 10 | Hood          | For USB 3.1 BM, Aluminum, Color: Gold, L*W*H=22.3*10.8*13.85mm   |

| Rev. | Date | Contents of Change | Designer | Tol±    |     |     |     |     |     |     |     | Approve | Check | Draw  | Design |        |      |    |
|------|------|--------------------|----------|---------|-----|-----|-----|-----|-----|-----|-----|---------|-------|-------|--------|--------|------|----|
|      |      |                    |          | Range   | Pla | Met | Ins | Por | Cab | Pac | Gas |         |       |       |        | Dis    |      |    |
| △    |      |                    |          | 0~6     | 0.1 | 0.1 | 0.1 | 0.2 | 0.5 | 1   | 0.5 | 0.2     | Allen | Allen |        | Philip |      |    |
| △    |      |                    |          | 6~30    | 0.1 | 0.1 | .15 | .25 | 1   | 1   | 0.5 | .25     |       |       |        |        |      |    |
| △    |      |                    |          | 30~80   | 0.1 | .15 | 0.2 | 0.3 | 2   | 1.5 | 1   | 0.3     |       |       |        |        |      |    |
| △    |      |                    |          | 80~180  | .15 | .15 | .25 | 0.3 | 2   | 2   | 1   | .45     |       |       |        |        |      |    |
| △    |      |                    |          | 180~315 | .15 | 0.2 | 0.3 | 0.4 | 2.5 | 2   | 1   | 0.6     |       |       |        |        |      |    |
| △    |      |                    |          | 315~800 | 0.2 | 0.3 | 0.4 | 0.5 | 3   | 3   | 2   | 1.1     | ⊕     | ☐     | Scale  | 1 : 1  | Unit | mm |

1

2

3

4

5

6

## X-ON Electronics

Largest Supplier of Electrical and Electronic Components

*Click to view similar products for [Roline manufacturer](#):*

Other Similar products are found below :

[11.04.5710](#) [11.04.5547](#) [11.04.5779](#) [11.04.5789](#) [11.02.8877](#) [11.04.5690](#) [11.04.5792](#) [11.04.5793](#) [11.04.5202](#) [12.03.3114](#) [11.04.5552](#)  
[11.04.5601](#) [11.02.8311](#) [11.02.8753](#) [12.04.1088](#) [11.02.8902](#) [11.02.9025](#) [21.15.0831](#) [21.15.0833](#) [21.15.2713](#) [21.15.2720](#) [21.15.2762](#)  
[11.09.4446](#) [11.04.5609](#) [12.02.1041](#) [21.15.0591](#) [11.04.5736](#) [11.04.5691](#) [26.11.0378](#) [12.03.3119](#) [11.01.6230](#) [11.04.5595](#) [11.09.4345](#)  
[11.09.4510](#) [21.15.0830](#) [21.15.2606](#) [16.01.3031](#) [11.02.8722](#) [11.02.8780](#) [11.04.5619](#) [11.04.5649](#) [11.04.5818](#) [12.03.3130](#) [11.02.8322](#)  
[11.02.8825](#) [11.01.5860](#) [11.09.4338](#) [11.09.4359](#) [12.03.3129](#) [21.15.2630](#)