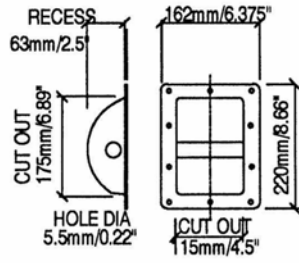


# Cabinet Handles

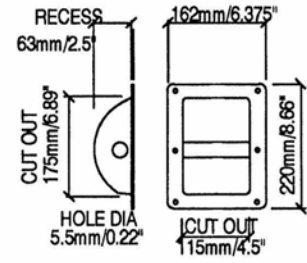


## H1105

Recessed Steel Bar Handle.  
Test Data Available.  
Suits Backplate H1105/BP and Air tight gasket H1105G

Material: 0.9mm/ 20 gauge Steel

Part Number	Finish	Description
H1105	Black	
H1105TEX	Textured Black	

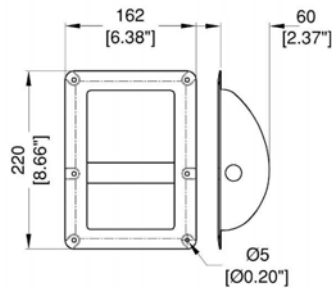


## H1105/06

6 Hole Recessed Steel Bar Handle.  
Test Data Available.  
Suits Backplate H1105/BP and Air tight gasket H1105G

Material: 0.9mm/ 20 gauge Steel

Part Number	Finish	Description
H1105/06	Black	

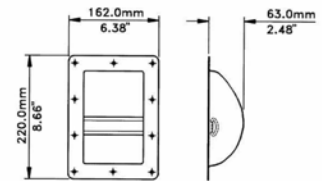


## H8805/06

6 Hole Recessed bar handle.  
In **Evolution** Style Dish, with rivet protection.  
Test data available.  
Suits Backplate H1105/BP and Air tight gasket H1105G  
**Registered Design**

Material: 0.9mm/ 20 gauge Steel

Part Number	Finish	Description
H8805/06	Black	

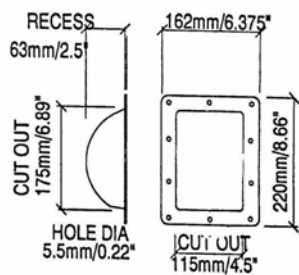


## H1104

Recessed Bar Handle.

Material: 0.9mm/ 20 gauge Steel

Part Number	Finish	Description
H1104	Black	
H1104TEX	Textured Black	

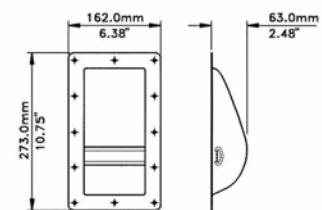


## H1107

Recessed Air Seal Cover for cabinets with routed wooden handle.  
Suits Backplate H1105/BP and Air tight gasket H1105G

Material: 0.9mm/ 20 gauge Steel

Part Number	Finish	Description
H1107	Black	



## H1069

Recessed Bar Handle.  
Suits Backplate H1070/BP

Material: 0.9mm/ 20 gauge Steel

Part Number	Finish	Description
H1069	Black	
H1069TEX	Textured Black	

## **X-ON Electronics**

Largest Supplier of Electrical and Electronic Components

*Click to view similar products for [Penn Elcom](#) manufacturer:*

Other Similar products are found below :

[RWB-1032-12UK](#) [RWB-1032-16UK](#) [H1008-BLK](#) [L905/927Z](#) [3232LK](#) [R6418-1032](#) [M154306](#) [5295](#) [G08](#) [G12](#) [3234LK](#) [R2100/2UK](#) [OR-4A6637](#) [M1552](#) [W9000-V6](#) [R0828/12](#) [R0828/16](#) [H1053Z](#) [H1024](#) [R8500-12](#) [D0604K](#) [R0828/18](#) [3233LK](#) [R0828/06](#) [8700/FANCORD](#)  
[R0821](#) [R1206/2U](#) [R0828/10](#) [F1554](#) [M1530](#) [R1194/2UK](#) [G10](#) [R1290/1U](#) [H0494](#) [G0780](#) [KIT](#) [M1500](#) [9106](#) [F1694](#) [R0828/14](#) [9112](#)  
[S1032/HP100](#) [G15](#) [M1701](#) [M1504](#) [EX-6301B](#) [R1206/1U](#) [H1053K](#) [C1824K](#) [R0828/21](#) [R0828/08](#)