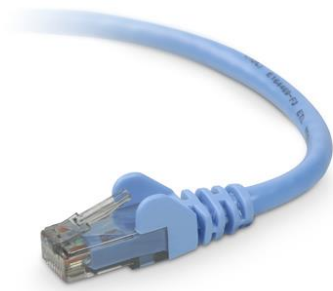




CAT6 Snagless Patch Cable * RJ45M/RJ45M; 5 Blue



Upgrade your network with a CAT6 Snagless Networking Cable from Belkin and enjoy clean, clear transmissions. Now you can replace CAT5 cables that don't support 100BASE-T or Gigabit Ethernet and improve the return loss in your current network by 40 percent. Engineered with 50-micron gold-plated connectors to ensure clear transmissions, and snagless molds to protect the RJ45 tabs from damage during installation, this cable meets and exceeds the performance requirements of Category 6.

General

- Network Cable Type: Patch cable - CAT 6
- Technology: Unshielded twisted pair (UTP)
- Features: Molded, snagless, gold plated connectors, staggered pin configuration
- Length: 5 ft
- Color: Blue

Connectivity

- Connector(s): 1 x RJ-45 - male
- Connector(s) (Other Side): 1 x RJ-45 - male

Miscellaneous

- Manufacturer Selling Program: Belkin B2B

Manufacturer Warranty

- Service & Support: Limited lifetime warranty

Compatibility Information

- Designed For: Belkin OmniView SMB 1x16 KVM-over-IP Switch, SMB 1x8 KVM-over-IP Switch, Belkin OmniView SMB CAT5 KVM Switch

- CAT 6 High Performance UTP Stranded Cable
- Standards Compliance: ISO/IEC 11801; TIA/EIA-568-B.2-1
- Conductor Size: 24AWG x 4pairs
- Conductor Construction: Bare Stranded Copper
- Insulation Material: HDPE
- Jacket Diameter: 5.50±0.20mm
- Jacket Material: PVC
- Rating: 75°C, 300V
- Conductor Resistance: 93.8Ω/km/20°C max
- Mutual Capacitance: 56pF/m max
- Dielectric Strength: AC 1.5kV/min
- Spark Test: 2.5kV
- Flame Retardant Test: CMR
- Characteristic Impedence: 100±15Ω @ 1 ~ 550MHz
- Structural Return Loss: 8.6dB min at 550MHz
- Propagation Delay: 536nS/100m max @ 550MHz
- Category 6 performance rated for any 10Base-T, 100Base-T, and 1000Base-T Network

X-ON Electronics

Largest Supplier of Electrical and Electronic Components

Click to view similar products for [Belkin](#) manufacturer:

Other Similar products are found below :

[A3L791-05-BLK-S](#) [A3L980-10-PNK-S](#) [A3L980-25-YLW-S](#) [F1DN104W-3](#) [F8J147BT04-BLK](#) [A3L980-03-PUR-S](#) [A3L980-05-BLU-S](#)

[A3L980-20-BLU-S](#) [A3L980-50-ORG-S](#) [F2CU043BT06-PUR](#) [A3L980-03-YLW-S](#) [F2CU043BT06-WHT](#) [A3L791-01-BLU-S](#)

[F2CU043BT06-PNK](#) [F2CU043BT06-RED](#) [F8W618BT3](#) [F2CU043BT06-GRN](#) [F2CD001B06-E](#) [RFQ43442-01](#)